



ACT
Government



Steve Forbes

Manager Spatial Services, ACT Emergency Services Agency

Spatial Information Saves a Life Everyday!



PAUL COMBS
DRAWN BY FIRE
FIRE ENGINEERING ©2013



CLASS OBJECTIVE

Hello, my name is Captain Smith, and I'll be presenting your class today where I will read each and every slide word for word with little intellectual or real-life input, creating an incredibly dull and poor learning experience for each of you.

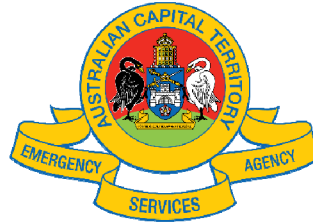
There will be bonus points given for anyone **still awake** at the end of today's lecture.

Slide 1 of 462

NEXT



ACT
Government



- ✓ Under the hood in Emergency 'Spatial' (Who/What/Why)
- ✓ Data for emergency services
- ✓ A cool project or two
- ✓ National collaboration
- ✓ What's the future hold



ACT
Government



All Hazards approach to Emergency Management in the ACT



Ask Yourself?

- Are you in a position to support emergency services?
- Is your employer a stakeholder of community events and emergencies?
- What data do you hold that may assist emergency responders?
- Are you the only GIS house in your local area?

ESA Spatial Services Section

Under the hood

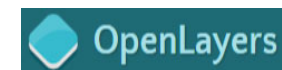
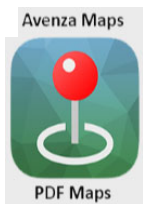
- Team Manager Spatial
- System Admin / Developer
- 2 x Spatial analysts / Generic GIS officers
- 1 x Emergency triple zero systems GIS officer
- Up to 50 Mapping and Planning Support ('MAPS') volunteer



ESA Spatial Services Section

Under the hood

- Over the past 10 years we have moved from being makers of maps to all things 'GeoSpatial'
- Our workforce wants to visualise data & self-serve maps
- Resources now have mobile PC's and smart devices
- Triple zero call centre has massive spatial needs
- A new 'app' is brought to our attention each week
 - *Or a new idea for us to make one...*
- Adding more information to GIS datasets daily
- Agency now understands spatial not just temporal



Where are you?

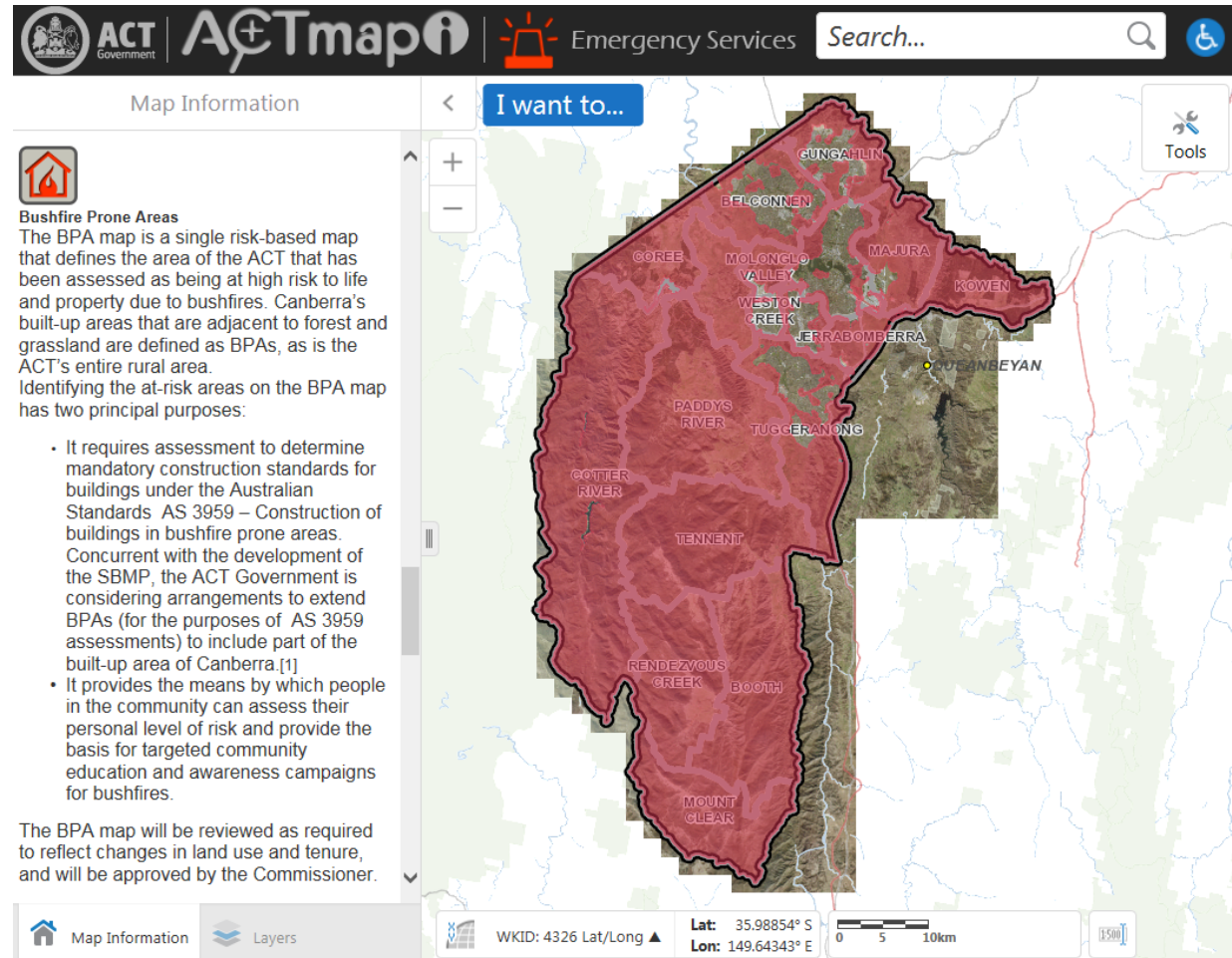
- Do you think there is an expectation that we know where everyone and everything is?
- Core Government data holdings are often not sufficient for emergency management
- Many sources are used to create our location search 'Gazetteer'
 - GNAF
 - ACT Govt.
 - NSW Govt. both State and LGA
 - Utility companies
 - NSW Emergency Services Agencies
 - Off the shelf data packs MapInfo/Sensis
 - ESA collected information
 - Farm info
 - Gates
 - Access roads/tracks/trails
 - Fire alarm locations
 - Private estate info (hydrants etc.)
 - Major Event overlays



Current Example of ESRI software

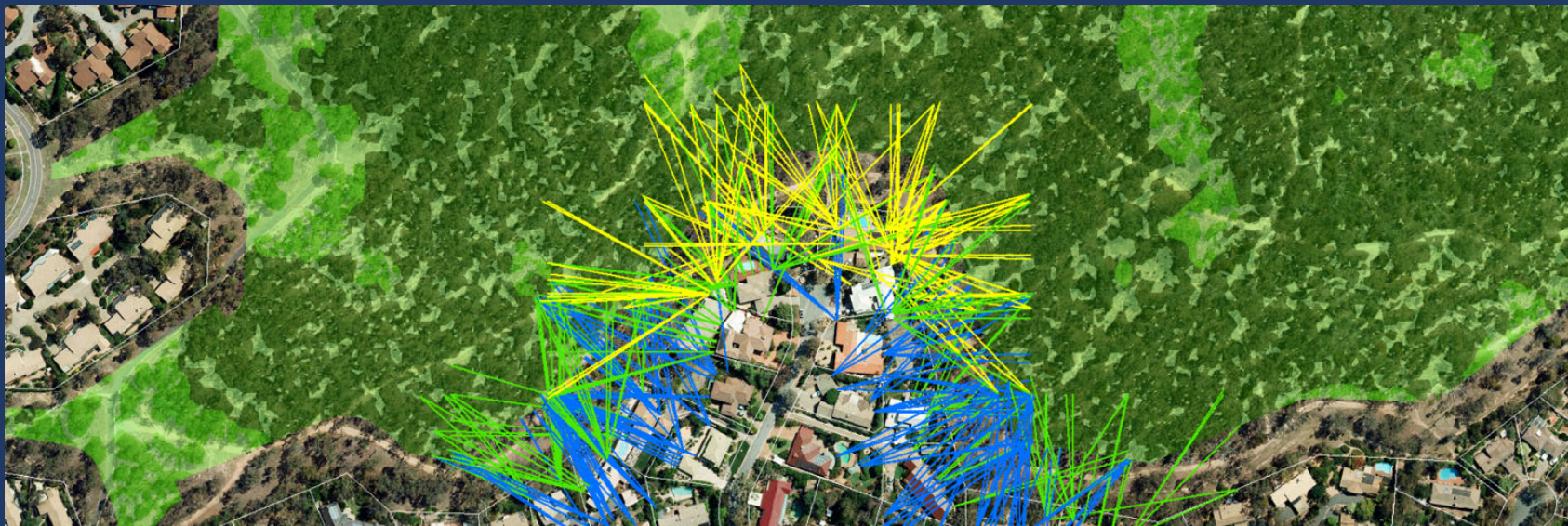
use within the Enterprise Licence Agreement

Implementation of building construction standards in Bushfire Prone Areas of the ACT

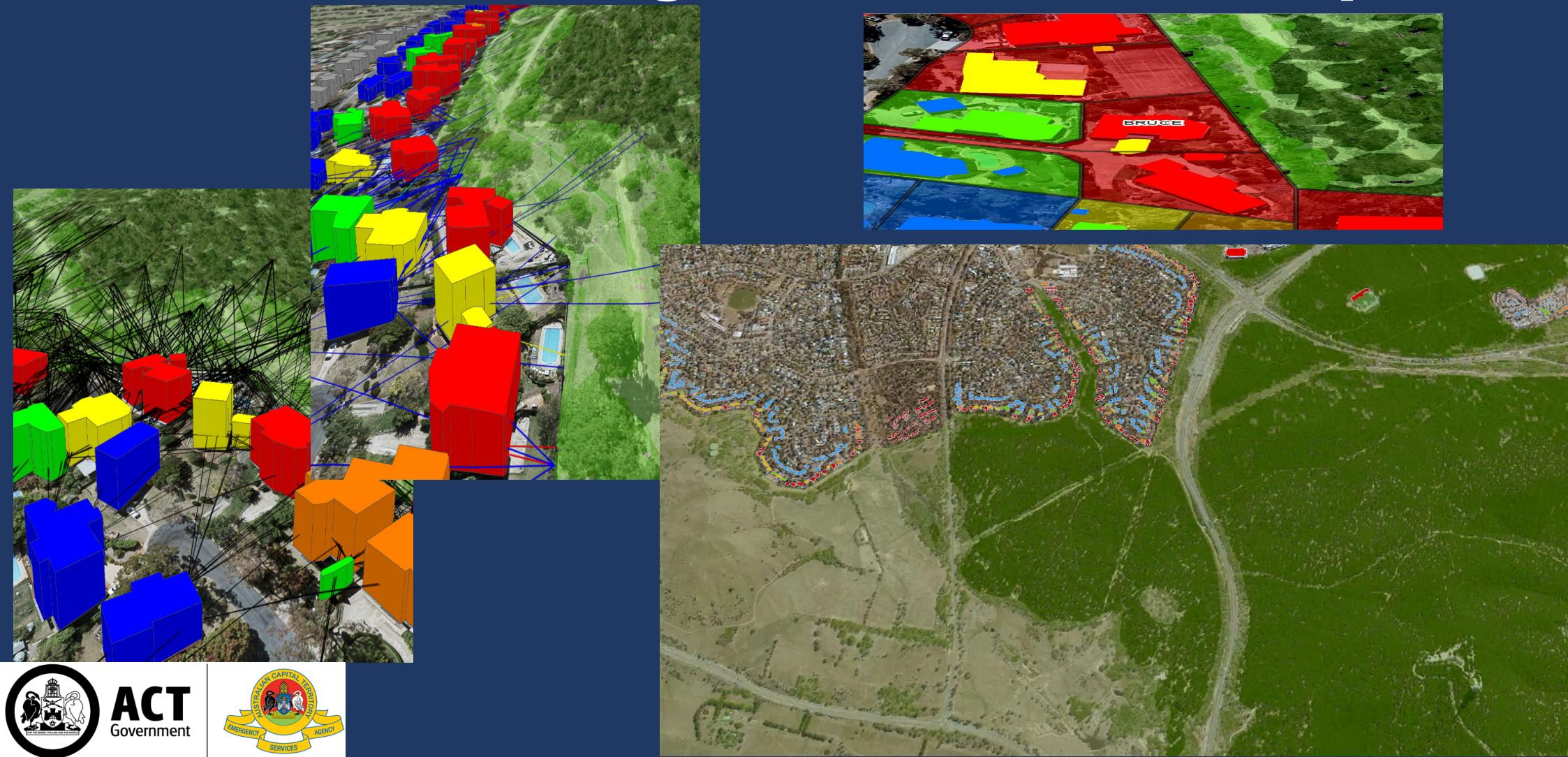


Automated BAL process

Using ACT Governments LiDAR capture, assess vegetation and slope to automatically calculate 'BAL' ratings by distance for all blocks/structures within the Bushfire Prone Land

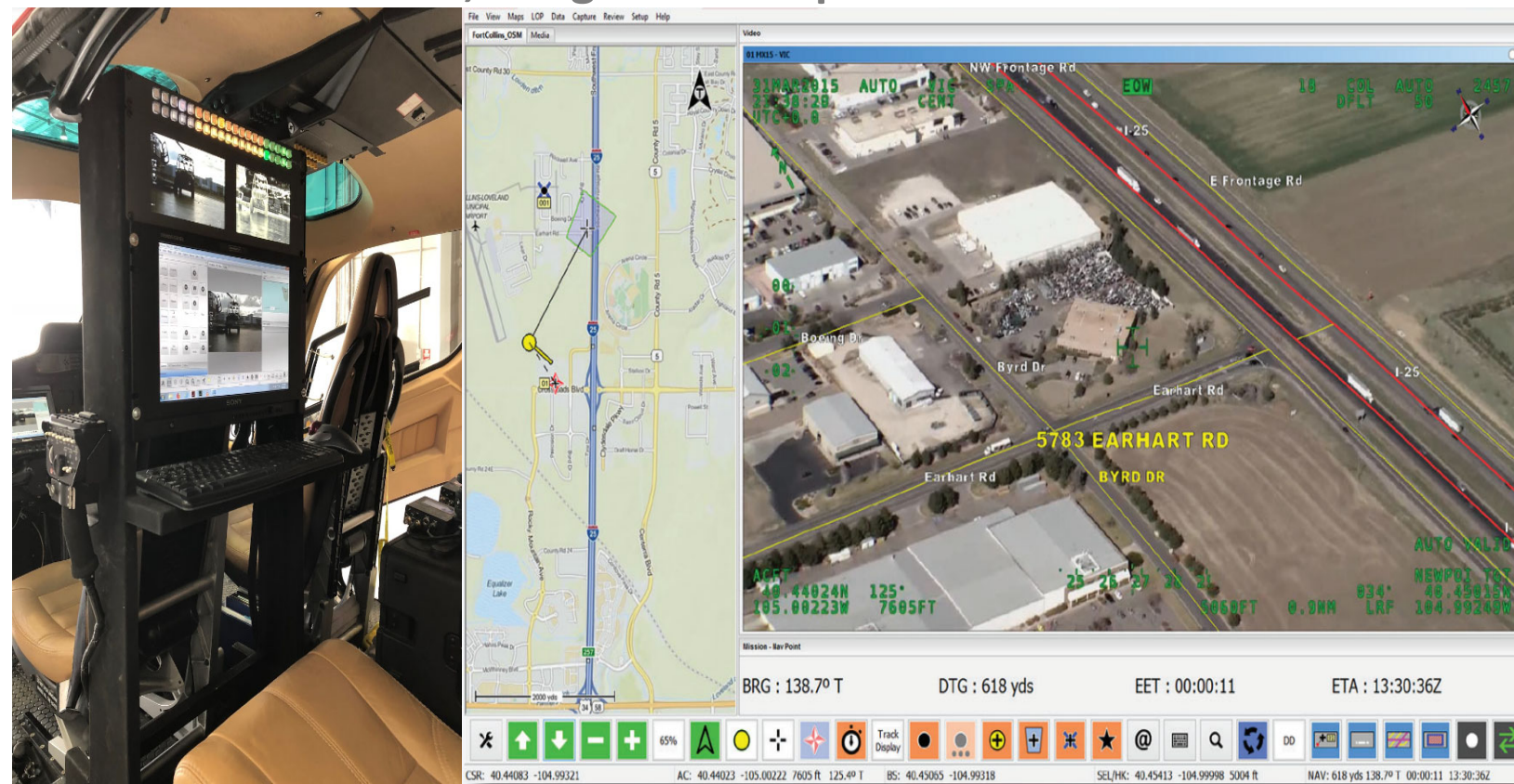


Modelled BAL Ratings 'Reducing Government Red Tape'



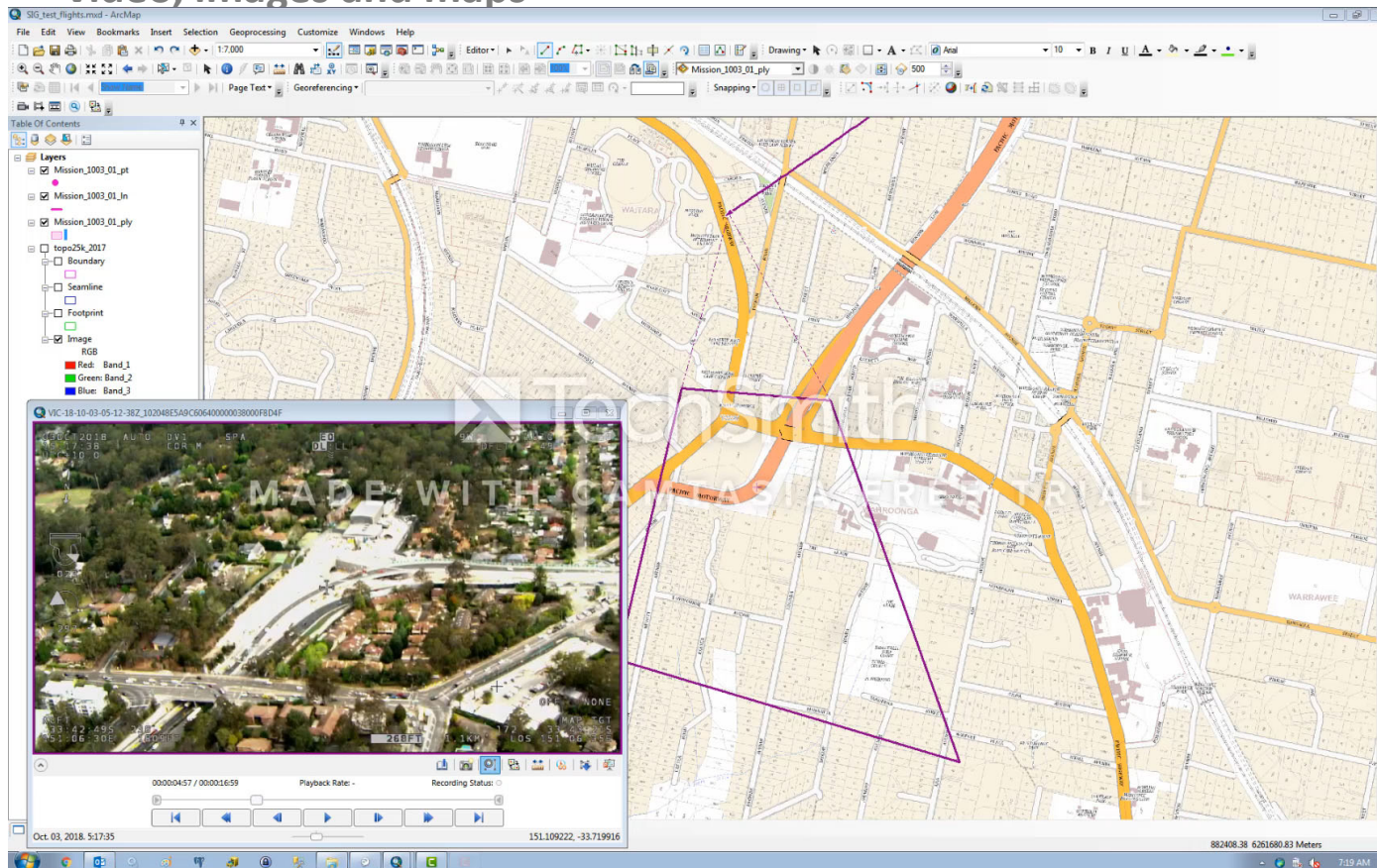
'Specialist Intelligence Gathering aircraft'

- Obtain detailed fire and emergency intelligence information
- collect, process and disseminate
- video, images and maps



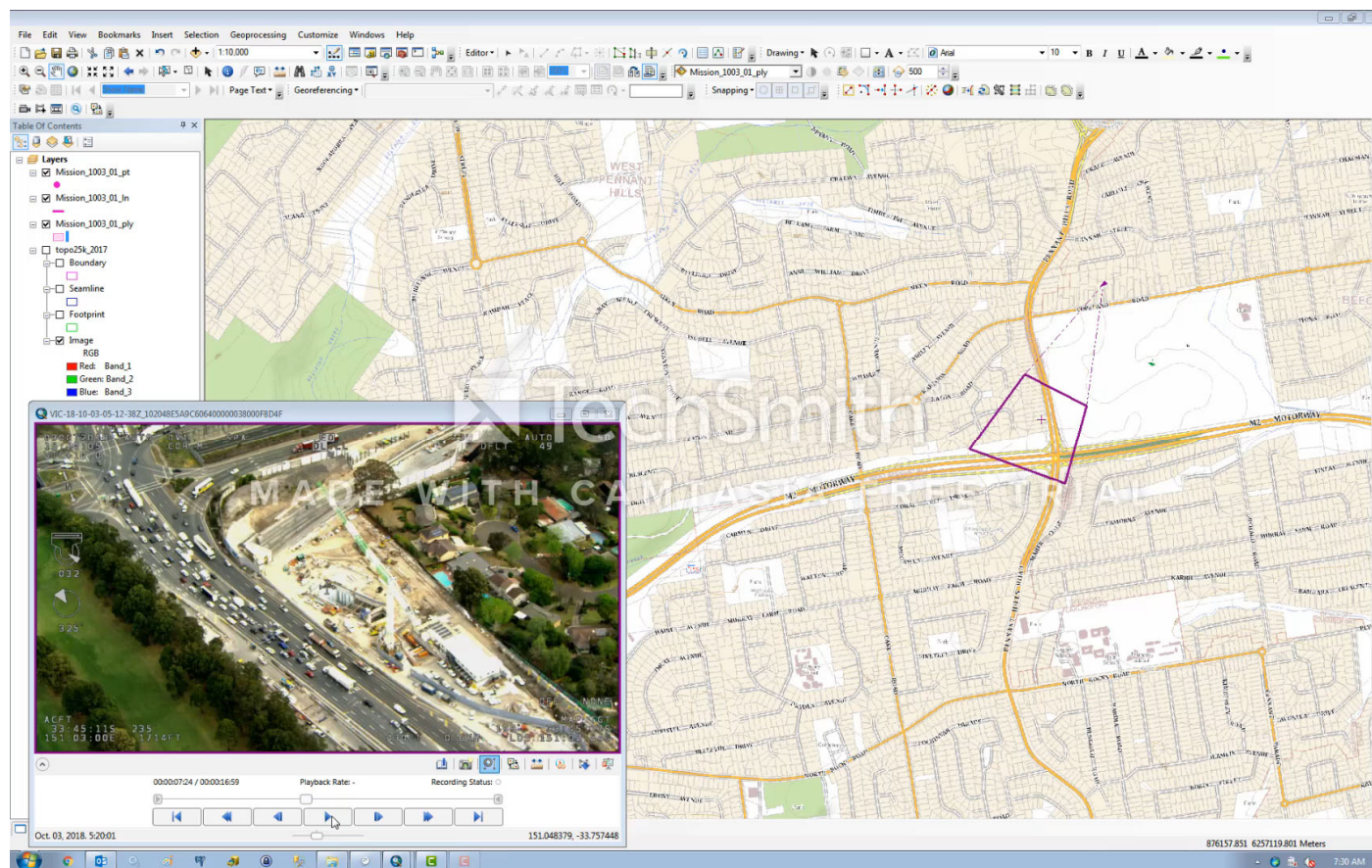
'Specialist Intelligence Gathering aircraft'

- Obtain detailed fire and emergency intelligence information
- collect, process and disseminate
- video, images and maps

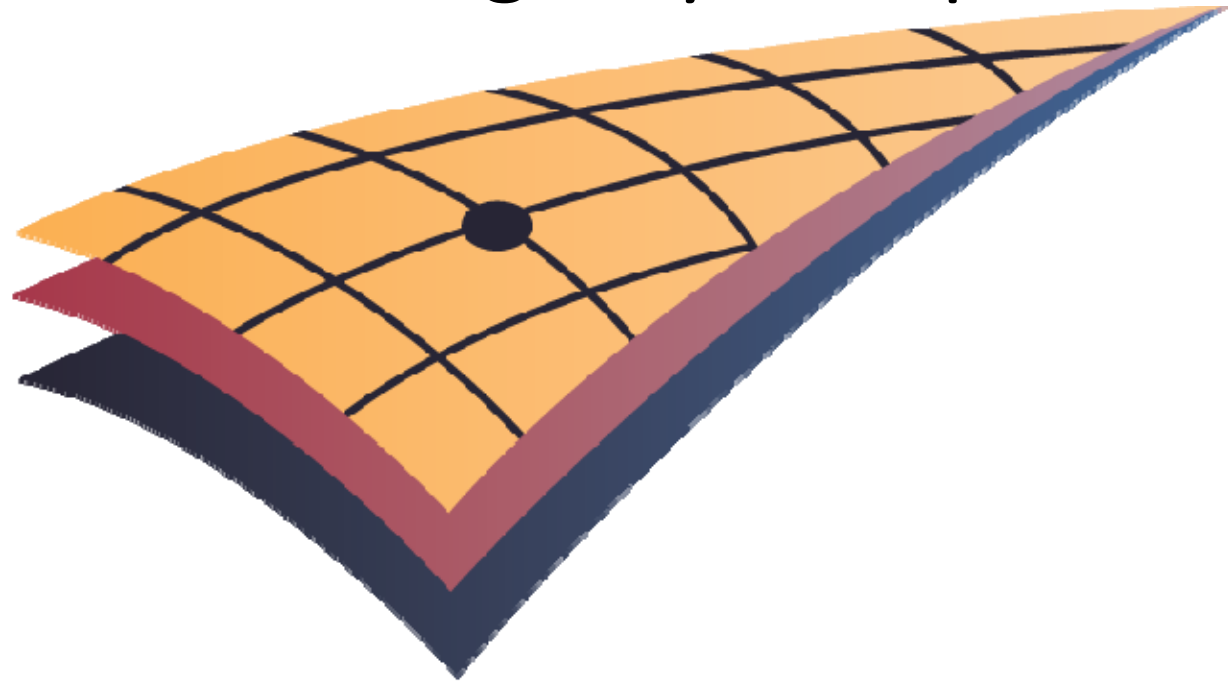


'Specialist Intelligence Gathering aircraft'

- Obtain detailed fire and emergency intelligence information
- collect, process and disseminate
- video, images and maps



The National Emergency GIS Space



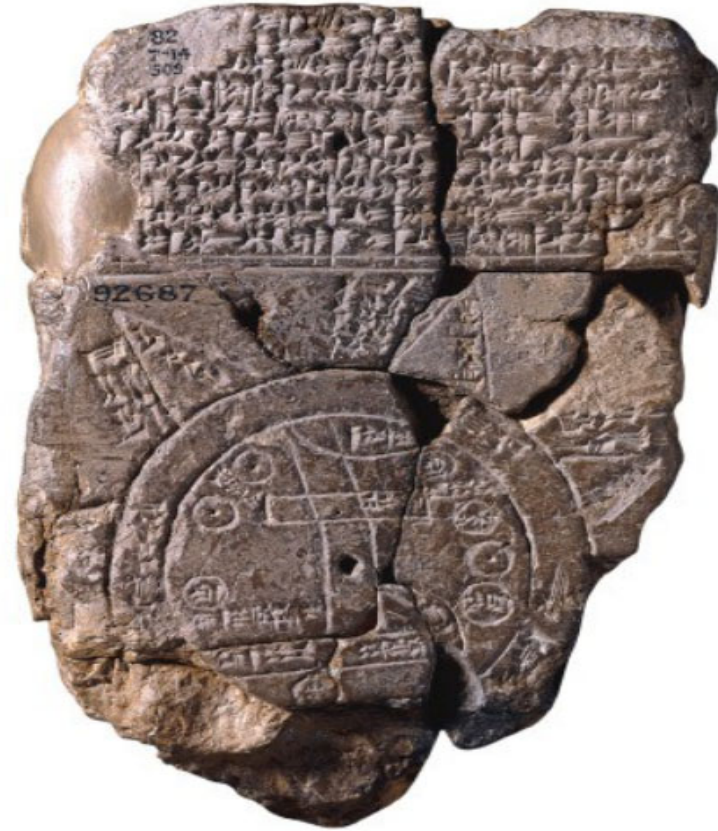
EMSINA



ACT
Government

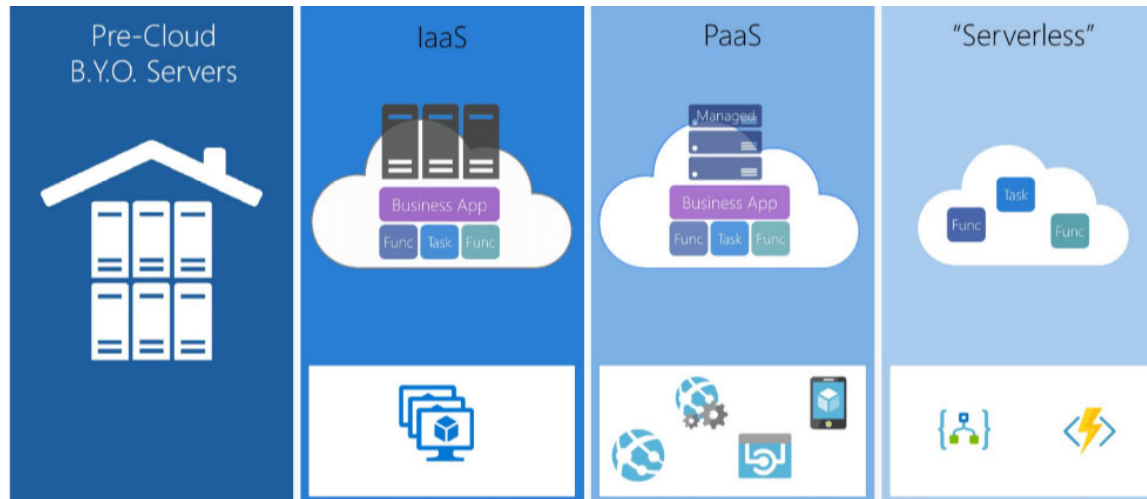


What's the future hold?

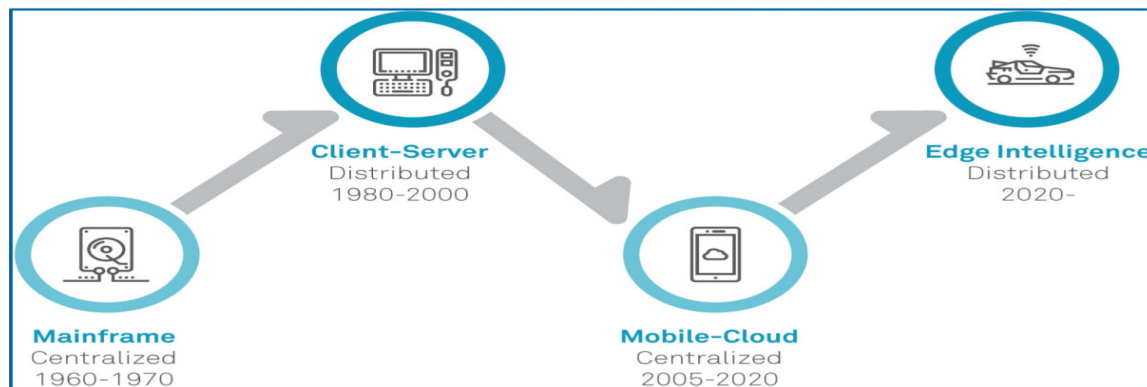


This carving depicting Babylon circa the 6th Century BCE is the world's earliest known map.

Keep Up! Evolution is quicker than this presentation!



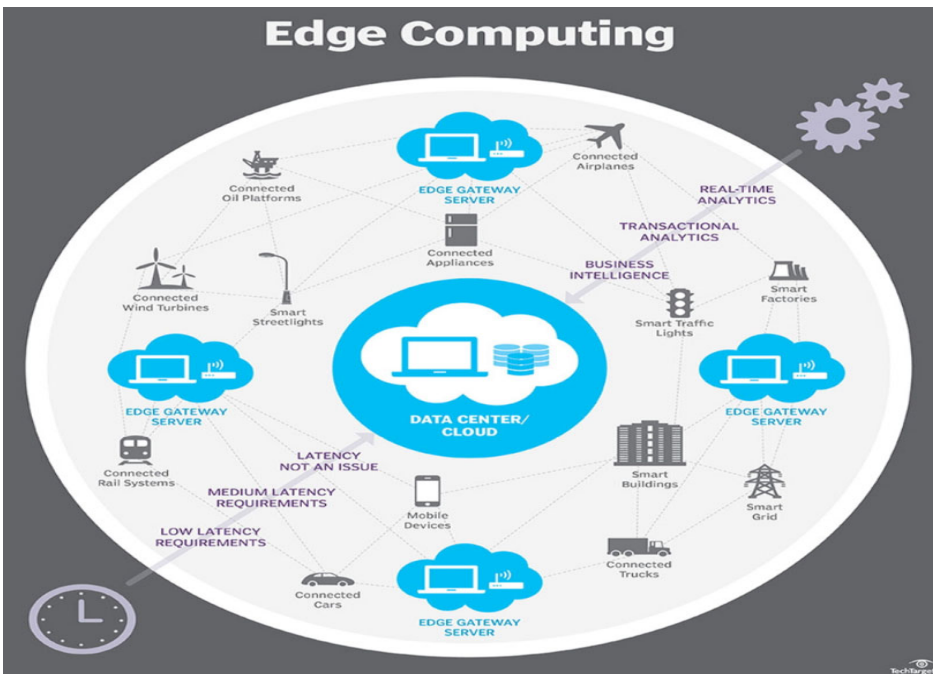
- The evolution of computing architecture
- Are we seeing the death of the GIS desktop guru!
- Self service is king, the developers win 🤖
- What's a cartographer again 🤔
- "But you're Government, you can afford this"!






ESA's future Spatial Plans

- Enhancing dynamic information exchange
- Modernising our mobile platforms
- Establishing field validation utilising all of our 'trusted' workforce
- Edge computing is here, needs to be embraced
- Upgrading aging platforms (*I'm sure you all share this pain...*)

Edge Computing



So did you ask yourself?

- Are you in a position to support emergency services 
- Is your employer a stakeholder of community events and emergencies 
- What data do you hold that may assist emergency responders 
- Are you the only GIS house in your local area 