

# Shoalhaven Community Solar Farm

**REPOWER**  
SHOALHAVEN

**flow**  
power

Presented by Walter Moore & Mark Raymond

# Project timelines

Community / private partnership developed a 4MWdc solar farm with no direct government funding.

Activity	Date
Initial engagement with Council & identify sites	Mid 2017
Participation in ARENA Solar Gardens Study	Early 2018
Proof of concept developed	Late 2018
Framework agreement - MoU	Mid 2019
Joint development agreement	Early 2020
DA, lease negotiations, network approval & project development	2020
Investment company established & funds secured	Early 2021
Construction commenced	Mid 2021
Systems commissioned	End 2021





# Repower Shoalhaven thinks big

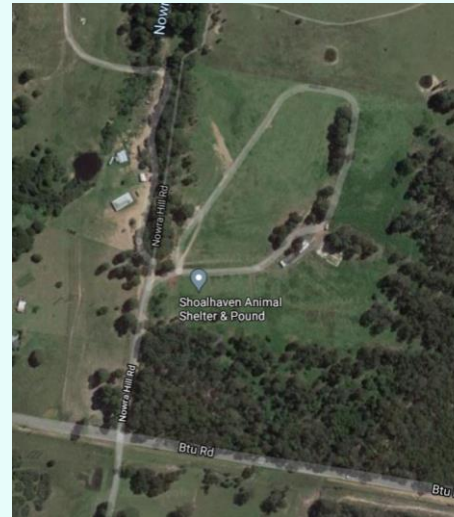
*Mission: Support community uptake of renewables*

- Innovative community investment model
- 7 companies >\$1m in community renewables investments
- 23 C&I solar projects with ~1MW of capacity
- Ongoing management of PPAs & companies
- Increased urgency to reduce emissions
- Improved technology & costs for large scale solar



# The quest for a solar farm

- Solar farm idea from a community forum
- Sub-committee formed
- Solar garden concept explored with ARENA
- Engaged with Council staff to identify sites
- Preliminary design & costings
- High level engagement with DNSP
- Formal council support to provide site
- Where/how to secure financing???





**Creating the renewable energy future, together.**



### **Electricity plans that reward efficient energy use**

Our products and plans empower energy users to reduce costs while increasing energy resilience as Australia transitions to 100% renewables.



### **100% renewable energy generation portfolio**

From building, owning and operating renewable energy and storage projects to securing solar and wind offtake from trusted partners.



### **Supporting business sustainability goals**

Proud pioneers of Power Purchase Agreements in Australia. We enable ESG-focused businesses to access long-term renewable energy supply.

# Starting the partnership



## Strengths

- Organised, effective community organisation – deep local connection and engagement
- Strong track record of community funding model working at a smaller scale
- Selected site and had in-principle agreement from council for the use case



## Strengths

- Established and trusted electricity retailer to offtake from project
- In-house engineering and advisory expertise
- Experience in building, owning and operating utility solar projects
- Investment – budget to spend to allow project construction

# Key Drivers

## Offtake agreement with City of Sydney

- Project formed a cornerstone of a broader renewable energy agreement between Flow Power and City of Sydney
- Firmed up business case for project investment

## Lease with City of Shoalhaven

- Suitable site with low-value land
- Structured to give the council confidence in the project and minimise risks to the council
- Agreement for neighbouring council animal shelter to receive rooftop system

# Solar farm metrics

- 7852 x 500W panels = 3.93MWdc
- Cost around \$5million, including development costs
- Forecast generation 5,900MWh/yr
- Commenced generation - January 2022
- Lifetime (30y) emissions reduction ~74,500 t CO2
- SMA 3MW inverter - Battery ready for DC-coupled BESS





# Project Development Agreements

## Defining roles

- Project development
- Marketing/engagement
- Investment pathways & risk sharing

Framework MoU  Joint Development

 Loan Facility (& Marketing Services)



## Joint Development Agreement (JDA) between

Progressive Green Pty Ltd trading as 'Flow Power' of 109 Burwood Road, Hawthorn 3122

(Flow Power)

and

Repower Shoalhaven Incorporated (ABN 73 379 383 110) of PO Box 2226, Bomaderry NSW, 2541  
(Repower Shoalhaven)

## Background

Flow Power and Repower Shoalhaven have an interest in forming a partnership to deliver the Shoalhaven Solar Farm project, located in the Shoalhaven region, NSW ("the Project").

## Framework Agreement (FA) between

Progressive Green Pty Ltd t/a Flow Power (ABN 27 130 175 343) of 109 Burwood Road, Hawthorn 3122  
(Flow Power)

and

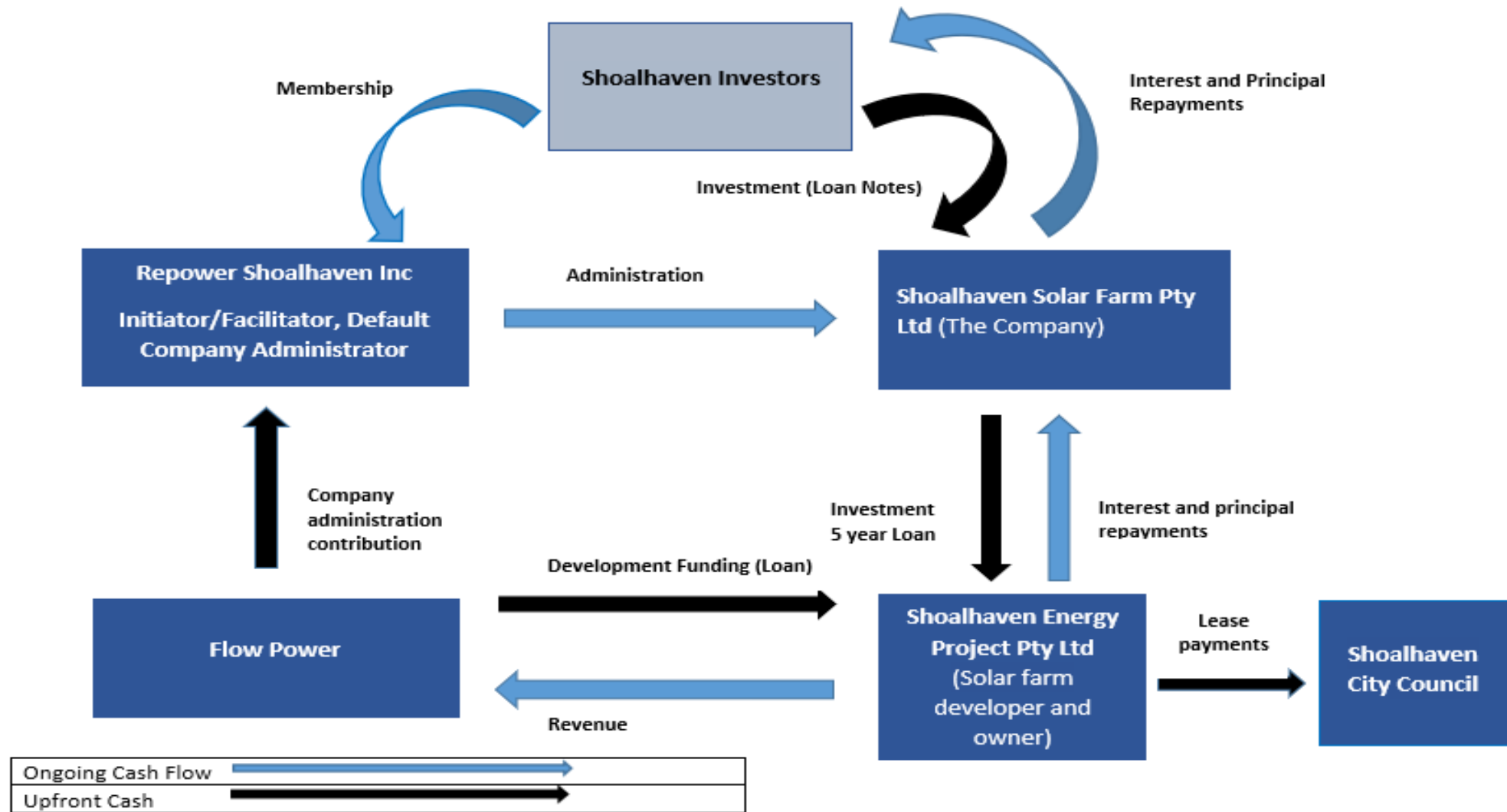
[Repower Shoalhaven Incorporated] (ABN 73 379 383 110) of PO Box 2226, Bomaderry NSW, 2541  
(Repower Shoalhaven)

## Loan Facility Agreement

Shoalhaven Solar Farm Pty Ltd  
ACN 640 570 770  
and

Shoalhaven Energy Project Pty Ltd  
ACN 638 107 543 as trustee of the Shoalhaven Energy Project Trust ABN 69 669 296  
018

## Financial Flows



# Project outcomes

- Collaborative model without direct government finance
- System achieving forecast outputs (3 MW) with battery option available
- 300 local workers utilised during construction plus ongoing employment and educational opportunities
- Supports circular economy with local businesses buying output.
- Provides financial returns for community investors and clean, affordable energy supplied to energy market



# Key take home messages

- Community investment appetite
- Early engagement creates opportunities
- Forward contracting reduces risks (PPAs)

## Project management lessons

- Regular, transparent updates between parties keeps everything moving – builds on the partnership
- Local, local, local!

## Clear, effective agreements, structures

- Use a structure to suit each parties needs and strengths



# Questions

