

EICU

Mapped Out 2021

Gareth Carter

Manager, Emergency Information Coordination Unit



What does EICU DO? – Data Sourcing

- Collects an enormous amount of data so that Emergency Management and Security agencies have a common base of relevant geospatial intelligence.
- Turns thousands of datasets into hundreds of harmonised layers with feature level metadata.
- Supplies data to EM agencies through the Emergency Services Spatial Information Library (ESSIL)
- Assists with WoG purchasing and arrangements for EM agencies

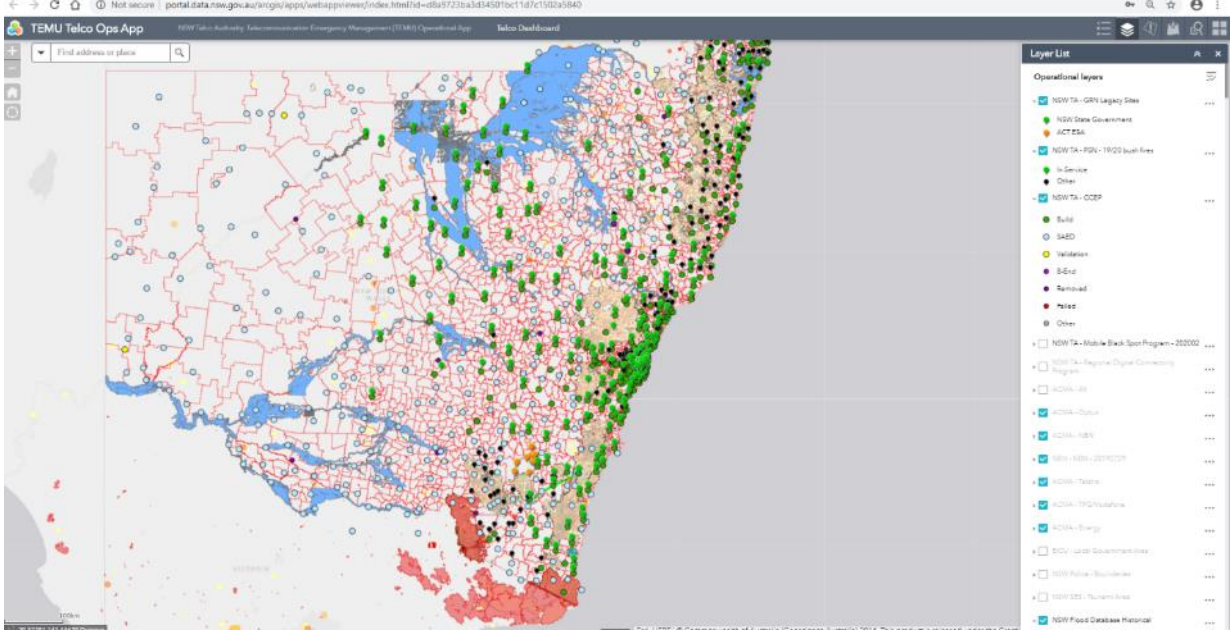
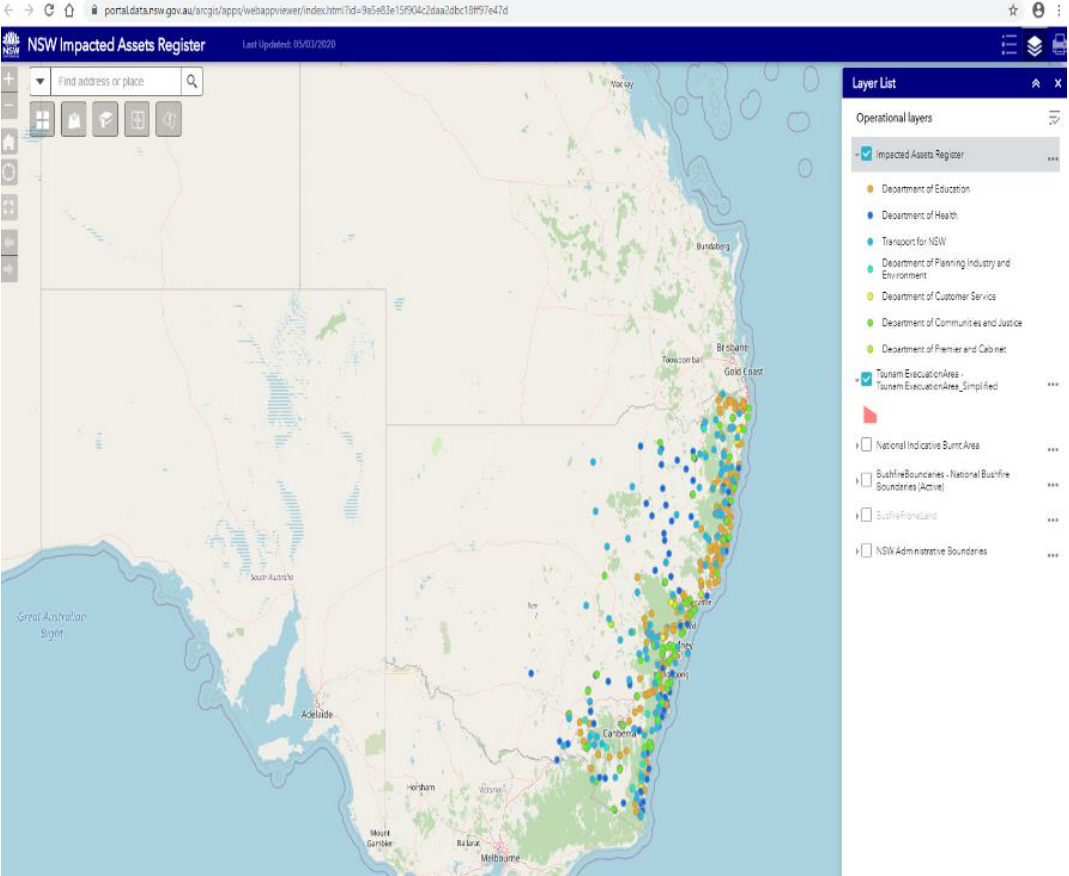


What does EICU do? – Event and Incidents

- Assists DPC with major planned events, NYE, Vivid, Visits from foreign leaders, ANZAC day
- There's about 1 a month
- Supports the major Operations Centres (GCC and SEOC) during major planned or unplanned events and incidents.
- Supports major state wide exercises (Lumen Temeris, Deerubbin)
- This involves coordinating geospatial intelligence across 30 agencies and providing a common theatre of operations (Web)
- Supplies the SIMS mapping software for use in emergency management.

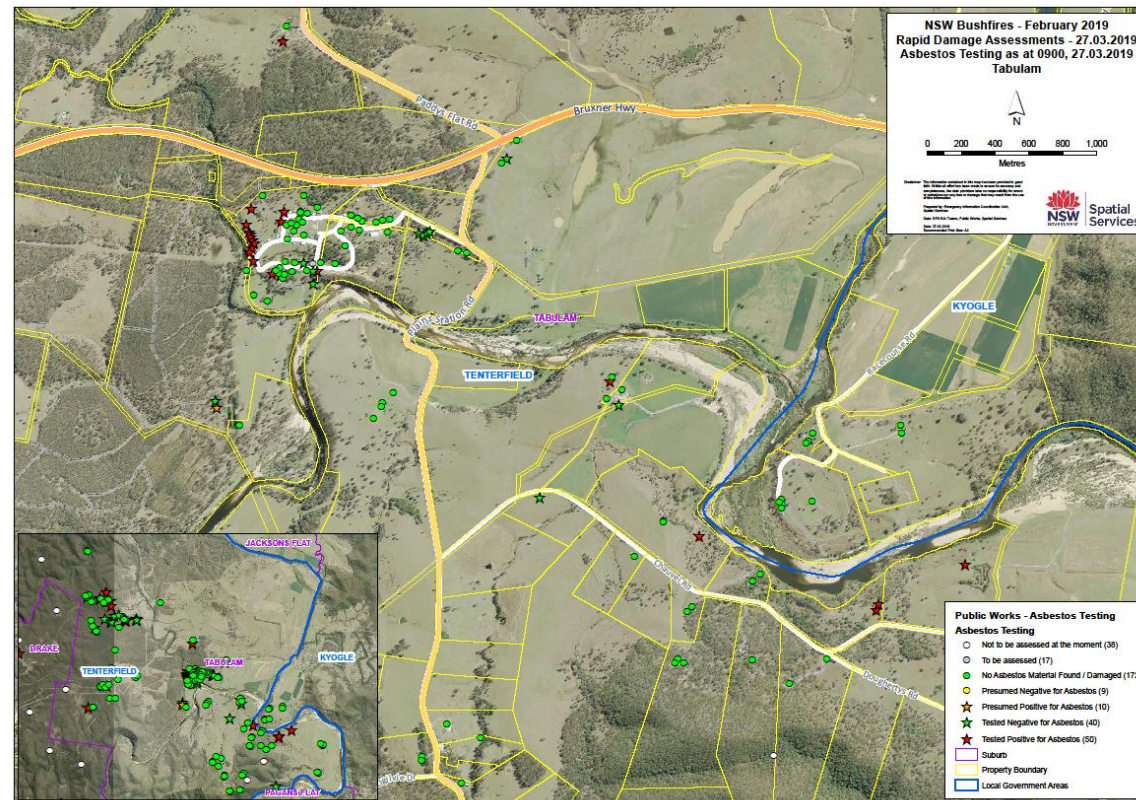


Agency Operation Pictures



What does EICU do? - Recovery

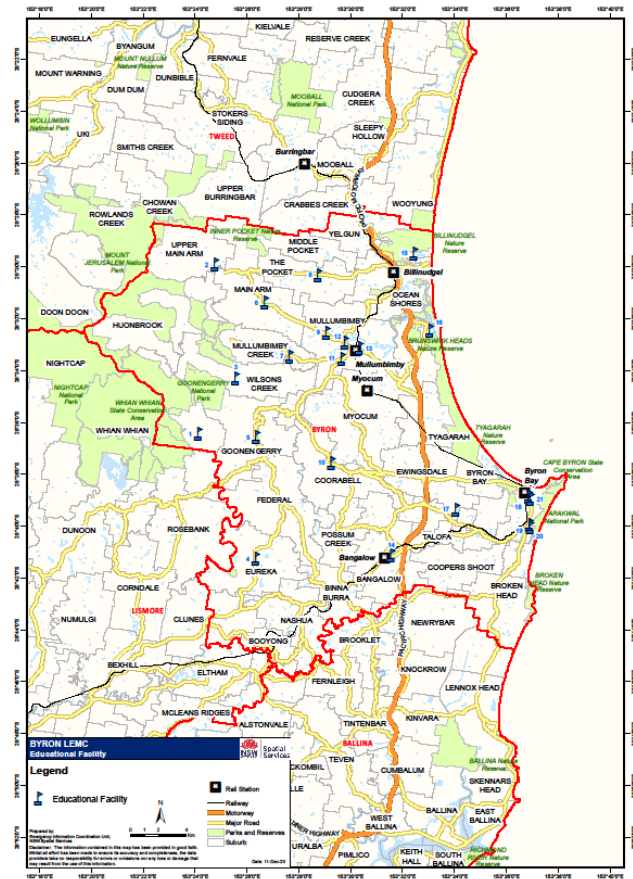
Assists the SERCON and state recovery working group with coordination of recovery data (imagery, impact analysis, asbestos etc)



What does EICU do? –Emergency Management

EICU supports local, state and federal EM agencies, through:

- Assistance to EOC and LEMC for incident mapping, risk management plans and other event management assistance
- Support to ResilienceNSW for risk and mitigation planning, general analysis
- Analysis and mapping for Arson Squad and Royal Commission / Coronial / Bushfire Inquiry
- Organisation and secretariat for peak working groups EMSIG (SEMC), NSW Data Working Group (SEMC), EMSINA (AFAC)



In this emergency period

Fires:

- Staffing RFS State Operations Centre.
- Staffing Incident Management Teams (IMT) for RFS
- Supporting State Emergency Operations Centre and Government Coordination Centre (SEOC and GCC)
- Acting as central coordination for (emergency) data sharing for NSW government
 - Damage Assessment
 - Imagery and intelligence sourcing (inc Spatial Services Aircraft)
 - International Charter on Space and Major Disasters
- Supporting State Emergency Recovery Controller (SERCON) with intelligence regarding recovery operations.
- Coronial, Bushfire Inquiry, Arson Squad

Covid:

- Staffing SHEOC
- Dashboards for SEOC and agencies
- Assisting DPC and DHealth with public health orders, border zones and address validation and app development

Floods:

- Damage Assessment

SEOC Operations Dashboard

