



Spatial  
Services

# Emergency Information Coordination Unit, Spatial Services

## Who are the EICU and what we do?

Shaun Epe  
Manager Client Services, EICU  
(02) 8224 3633 or 0427 627 398

[spatialservices.finance.nsw.gov.au](https://spatialservices.finance.nsw.gov.au)

# OVERVIEW

## Emergency Information Coordination Unit (EICU)

Background; Objectives

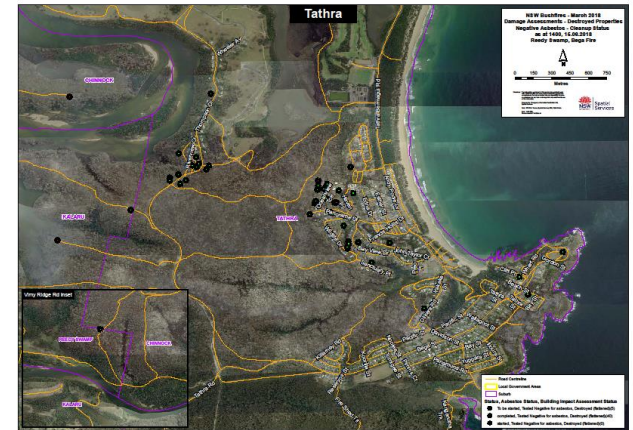
## Emergency Services Spatial Information Library (ESSIL)

## Spatial Information & Mapping System (SIMS)

## Buildings & Infrastructure Database

## Special Events

## Operational Support



# EMERGENCY INFORMATION COORDINATION UNIT (EICU)

Formed in LPI in 2002 to respond to the spatial information requirements of a Sep11 type event in NSW

Role later extended to provide spatial information to all emergency service organisations, functional areas and local, state & federal agencies.

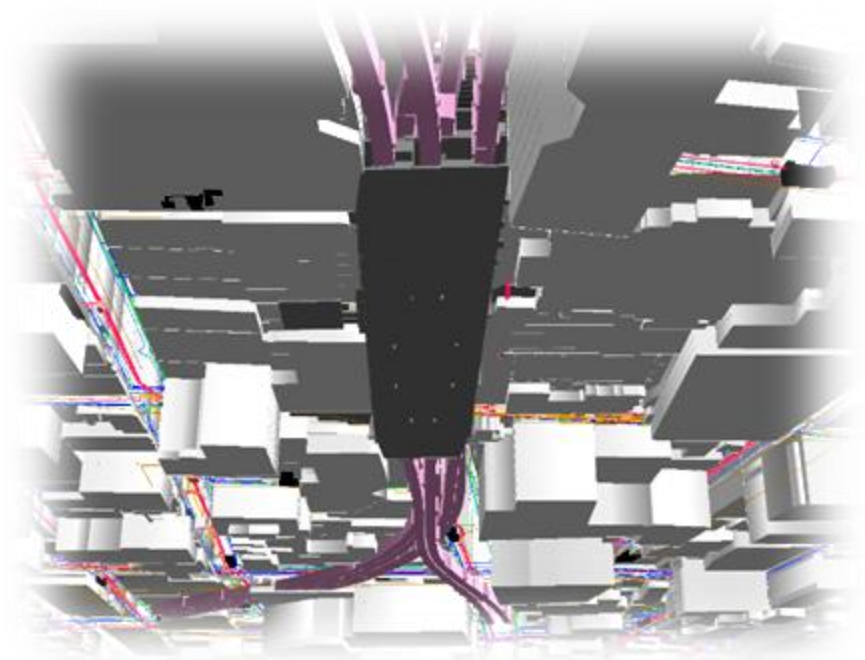
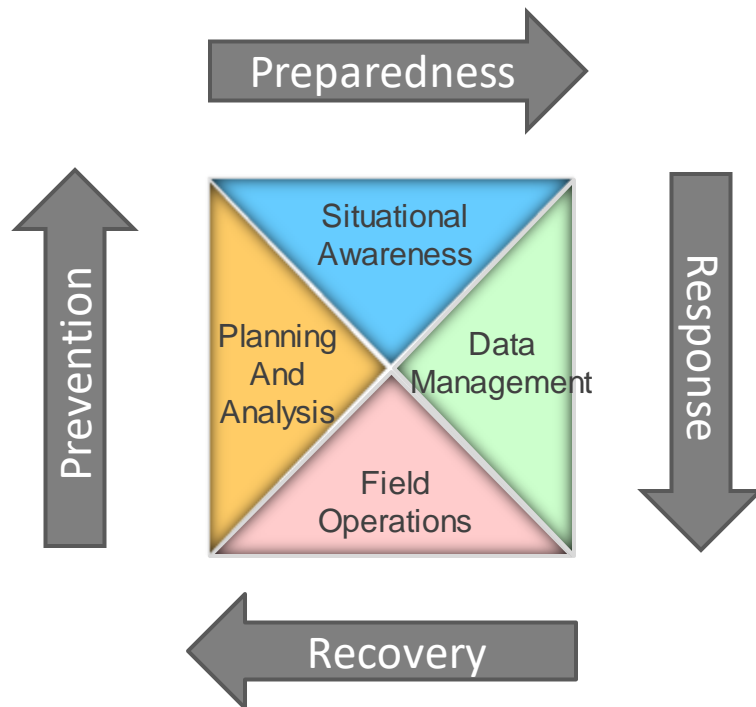


# GIS IN EMERGENCY MANAGEMENT

## GIS in Emergency Management:

What role does it play and where is it used?

Minimise the impact of disasters on lives and properties



# HOW EICU OPERATES

*Promoting and supporting the best practice use of geospatial technologies in emergency management, counter terrorism and critical infrastructure protection*

## **1. DATA**

- ESSIL
- Best available information
- Ready for use

## **2. EM SDI**

- Infrastructure for collection, manipulation, distribution and use of information

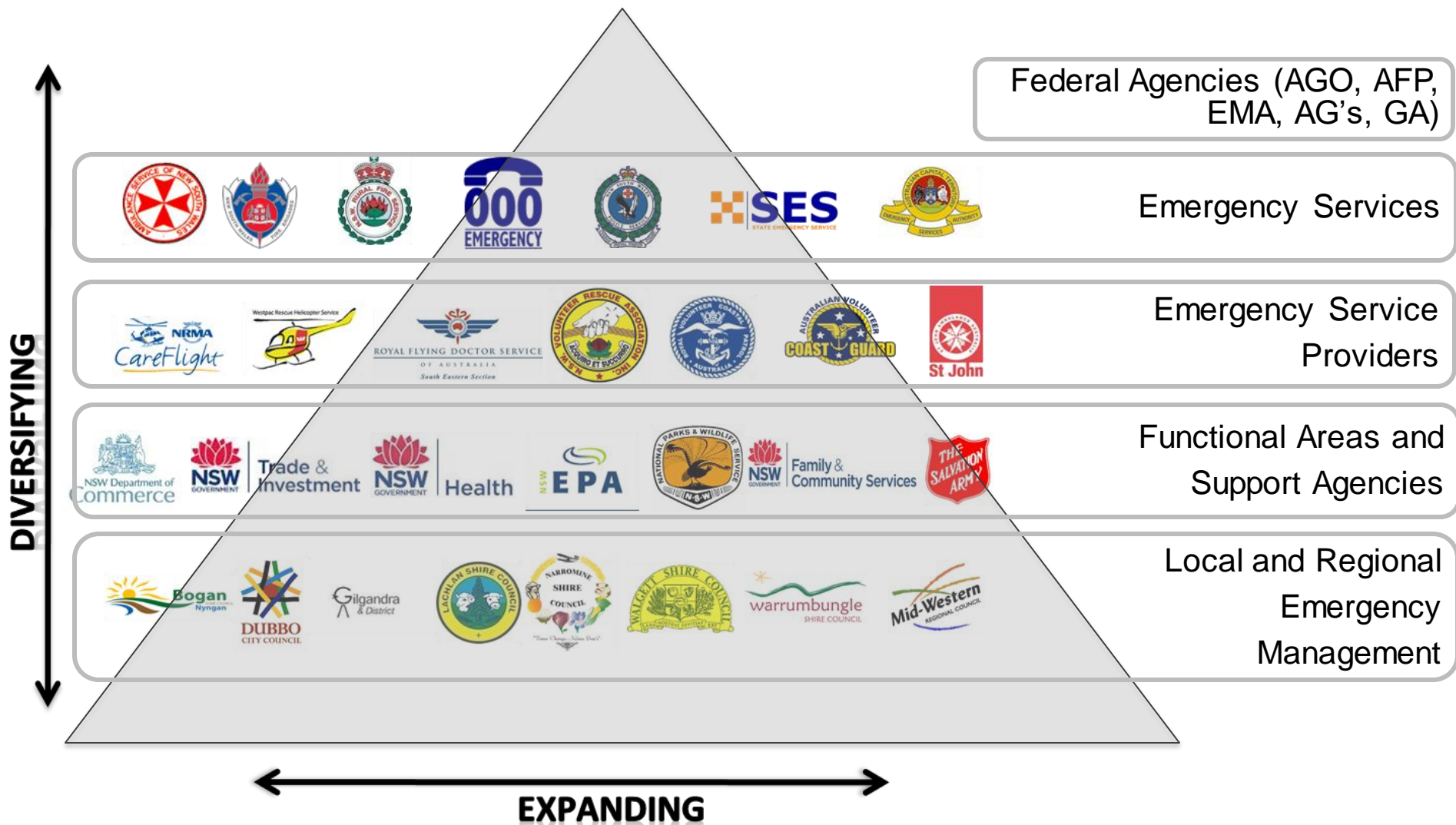
## **3. APPS**

- SIMS
- Simplify use and access to information

## **4. SUPPORT**

- Operations Centres
- Coordination Centres
- Planning
- Mapping

# EICU PARTNERS & STAKEHOLDERS





## **EMERGENCY SERVICES SPATIAL INFORMATION LIBRARY**

*One stop shop for geo data... 350 seamless state wide layers...*

**Basemaps – Imagery & Topographic**

**Communications – Telephone exchanges & cables**

**Built Environment – Schools, Hospitals, Childcare, Buildings**

**Persons at Risk – Aged Care, Schools, Childcare**

**Hazards – Fire, Flood, Earthquake History, Bushfire Prone Land**

**Emergency Management – Police, SES, RFS, FRNSW, VRA, Marine Rescue – Sites & Boundaries**

**Location – Points of Interest**

**Transport – Air, Road & Rail**

**Environment – Vegetation, Soils, National Parks, State Forests**

**Utilities – Water, Sewer, Stormwater, Electricity & Gas**

**Up to date information from Source Agencies is extremely important. 6 monthly data supplies will benefit all users and the EM Sector**

# ESSIL OVERVIEW – September 2018

Source Data  
from  
Custodians

- Transformed into:
- Same projection
  - Same database
  - Unaltered model
  - Verified
  - EICU metadata

## EICU DATA REPOSITORY on Informix

**STAGING  
DATABASE**  
95 Million  
features

Fit data into  
ESSIL Model

**DELIVERY  
DATABASE**  
34 Million  
features

Export Data

**DCDB**  
7.9 M

**DTDB**  
8.3 M

**GURAS**  
7.0 M

AAMHATCH	Clarence Valley Council	Heritage Office	NSW Ambulance	Sinclair Knight Merz
Albury City Council	Cobar Shire Council	Hornsby Shire Council	NSW Art Gallery	Singleton Shire Council
	Coffs Harbour City Council	Hunter Water Corporation	NSW Board of Studies	Snowy Mountains Hydro Electric Authority
	Conargo Shire Council	Hunter Hill Council	NSW Department of Commerce	Snowy River Council
	Cooma Monaro Shire Council	Hydrographic Survey	NSW Department of Community Services	State Emergency Management Committee
	Cootamundra Shire Council	Integr	NSW Department of Health	State Rescue Board
	Corowa Shire Council	Inverell Shire Council	NSW Department of Human Services	State Rescue Board
	Council of the City of Sydney	Jemena	NSW Department of Industry and Investment	Sutherland Shire Council
	Country Energy	Jerilderie Shire Council	NSW Department of Planning	Sydney Water
	Cowra Shire Council	Kempsey Shire Council	NSW Department of Primary Industries	Tamworth Regional Council
	Data Australia	Kiama Municipal Council	NSW Dept of Education	TELSTRA
Australian Capital Territory	Data Australia	Kogarah Municipal Council	NSW Fire Brigades	The Hills Shire Council
Australian Communications and Media Authority		Ku-ring-gai Council	NSW Land and Property Information	Tourism NSW
Australian Electoral Commission		Kyogle Council	NSW Maritime	Transgrid
Australian Museum		Lachlan Shire Council	NSW National Parks and Wildlife Service	Transport for NSW
Australian Tax Office		Lake Macquarie City Council		Tumbarumba Shire City Council
Ausways		Leeton Shire Council		Tumut Shire Council
		Liverpool Plains Shire Council		Tweed Shire Council
		Maitland City Council		USD
		MANLY COUNCIL		University of Sydney
		MapInfo		Upper Hunter Shire of Councils
		Marriockville Council		Uralla Shire Council
		Mid Coast Water		Wagga Wagga City Council
		Moree Plains Shire Council		Wakool Shire
		Mosman Municipal Council		Walcha Council
		Murray Shire Council		Walgett Shire
		Muswellbrook Shire Council		Warragah Council
		Nambucca Shire Council		Warrumbungle
		Narrabri Shire Council		Waverley Council
		Narrandera Shire Council		Wellington Council
		Narromine Shire Council		Wentworth Shire
		Navigate		Willoughby City
		Newcastle City Council		Wingecarribee
		North Coast Water		Wollondilly Shire Council
		North Sydney Council		Wollongong City Council
				Woolahra Municipal Council
				WorkCover Authority of NSW
				Wong Shire Council
				Yass Valley Council
				Young Shire Council

# WATER

## Water Treatment Plant

## Water Main

## Water Hydrant

Albury City Council  
 Armidale Dumaresq Council  
 Ballina Shire Council  
 Balranald Shire Council  
 Bankstown City Council  
 Bathurst Regional Council  
 Bega Valley Shire Council  
 Bellingen Shire Council  
 Berrigan Shire Council  
 Blayney Shire Council  
 Bourke Shire Council  
 Byron Shire Council  
 City of Lithgow Council  
 Clarence Valley Council  
 Cobar Shire Council  
 Coffs Harbour City Council  
 Cootamundra Council  
 Corowa Shire Council  
 Cowra Shire Council  
 Deniliquin Shire Council  
 Dubbo City Council  
 Forbes Shire Council  
 Gilgandra Shire Council  
 Glen Innes Severn Council  
 Gosford City Council  
 Goulburn Mulwaree Council  
 Griffith City Council  
 Hunter Water Australia  
 Inverell Shire Council  
 Jerilderie Shire Council  
 Kempsey Shire Council  
 Kyogle Council  
 Land and Property Information



## Water Pumping Station

## Water Structure



Identify	
Identify from:	<Top-most layer>
Location:	151.208117, 33.46431, Delisted Layers
Field	Value
Water_Main_Type	Reticulation
Water_Type	Potable
Pipe_Diameter_mm	150
Agency_Asset_Type	Reticulation
Asset_Status	Existing
Asset_Owner	Sydney Water
Pipe_Material	CICL
Pipe_Placement	Underground standard depth
Approximate_Pipe_Depth_mm	<null>
Water_System_Area	Z_CENTENNIAL_PARK
Asset_ID	2581275
symbolname	WATER_MAIN_POTABLE_100
eicu_id	{6C8E7888-806F-410C-81AF-
EICU_Load_Date	11/02/2011
EICU_Supply_Date	31/01/2011
End_Date	<null>
Last_Verified_Date	31/01/2011
Source_Data_Layer	Watermain_Centreline
Source_System_Key	1026019
Positional_Accuracy	CUSTOMIAN, best available
Source_Agency	Sydney Water
extrctdate	6/08/2011

## Water Valve



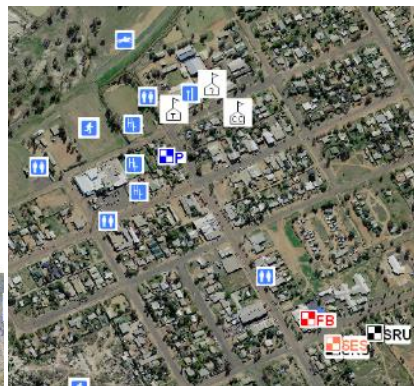
## Water Storage

Leeton Shire Council  
 Lismore City Council  
 Liverpool Plains Shire Council  
 Mid Western Regional Council  
 Midcoast Water  
 Moree Plains Shire Council  
 Murray Shire Council  
 Nambucca Shire Council  
 Narrabri Shire Council  
 Narrandera Shire Council  
 Narromine Shire Council  
 Orange City Council  
 Parkes Shire Council  
 Richmond Valley Council  
 Rous County Council  
 Shoalhaven City Council  
 Singleton Shire Council  
 Snowy River Shire Council  
 Sydney Water  
 Tamworth Regional Council  
 Tumbarumba Shire Council  
 Tumut Shire Council  
 Upper Hunter Shire of Councils  
 Wakool Shire Council  
 Walgett Shire Council  
 Warrumbungle Shire Council  
 Wellington Council  
 Wentworth Shire Council  
 Wingecarribee Shire Council  
 Wyong Shire Council  
 Yass Valley Council  
 Young Shire Council

## Water Canal

# COMMUNITY FACILITY

Ambulance Service of NSW  
 Association of Independent  
 Schools of NSW  
 Catholic Education Commission  
 Data.gov.au  
 Department of Health and Ageing  
 Department of Human Services  
 Fire & Rescue NSW  
 Geoscience Australia  
 Land and Property Information  
 NSW Department of Education  
 and Training  
 NSW Department of Family and  
 Community Services  
 NSW Department of Health  
 NSW Fire Brigade  
 NSW Maritime  
 NSW Police  
 QLD Department of Education  
 and Training  
 Rail Corporation  
 Roads and Traffic Authority  
 State Emergency Service  
 State Rescue Board  
 Universities\_Australia



**Identify**

Identify from: **Childcare Facility**

Location: 151.205915 -33.876984 Decimal Degrees

Field	Value
service	Active Kids @ World Square
street_address	Level 11 650 George Street
suburb	SYDNEY
postcode	2000
state	NSW
license_number	CSSC1000178
max_license_no_day	70
max_lic_0_to_2	30
max_lic_2_to_3	40
max_lic_3_to_6	<null>
max_lic_6_to_12	<null>
mon_open	07:00
mon_close	07:00
tue_open	07:00
tue_close	07:00
wed_open	07:00
wed_close	07:00
thu_open	07:00
thu_close	07:00
fri_open	07:00
fri_close	07:00
EICU_Supply_Date	18/07/2011
srclayer	Child_Care_Centres_No_Change
Source: Info Extract Date	Department of Family and Community 29/08/2011

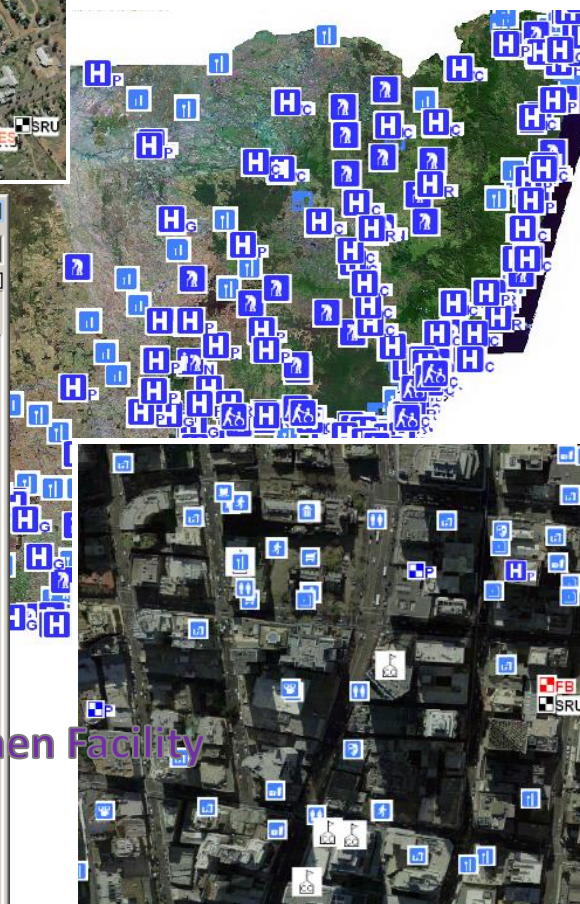
Identified 1 feature

## Emergency Facility

## Education Facility

## Health Facility

Ashfield Municipal Council  
 Baulkham Hills Shire Council  
 Bega Valley Shire Council  
 Bellingen Shire Council  
 Bogan Shire Council  
 Byron Shire Council  
 City of Newcastle  
 Conargo Shire Council  
 Council of the City of Sydney  
 Gilgandra Shire Council  
 Glen Innes Severn Council  
 Gosford City Council  
 Greater Taree City Council  
 Hawkesbury City Council  
 Kempsey Shire Council  
 Kogarah Municipal Council  
 Ku-ring-gai Council  
 Kyogle Council  
 Leeton Shire Council  
 Lismore City Council  
 Marrickville Council  
 Mosman Municipal Council  
 North Sydney Council  
 Richmond Valley Council  
 Shoalhaven City Council  
 Tumut Shire Council  
 Warrumbungle Shire Council  
 Waverley Council  
 Wellington Council  
 Wollongong City Council  
 Woollahra Municipal Council  
 Yass Valley Council



## Accommodation Facility

## Public Facility

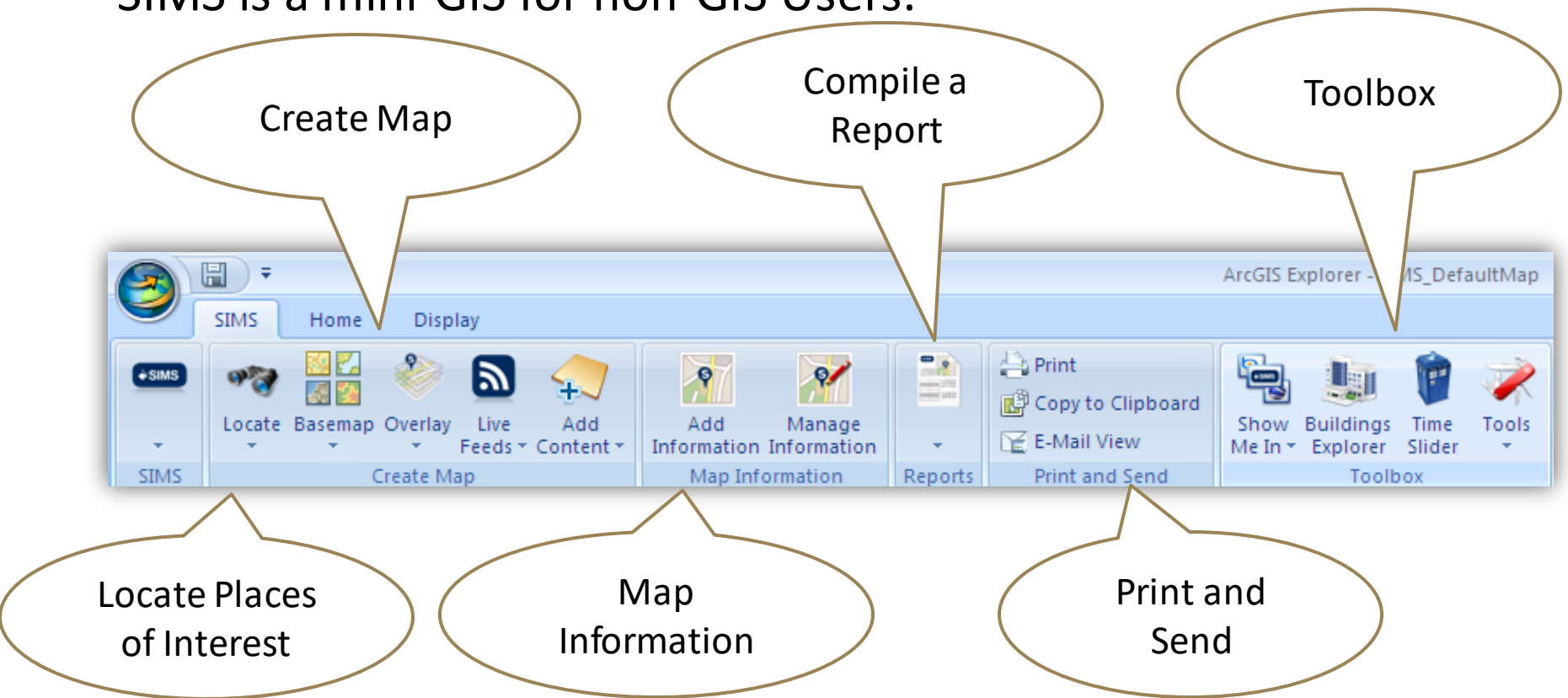
## Recreational Facility

## Kitchen Facility

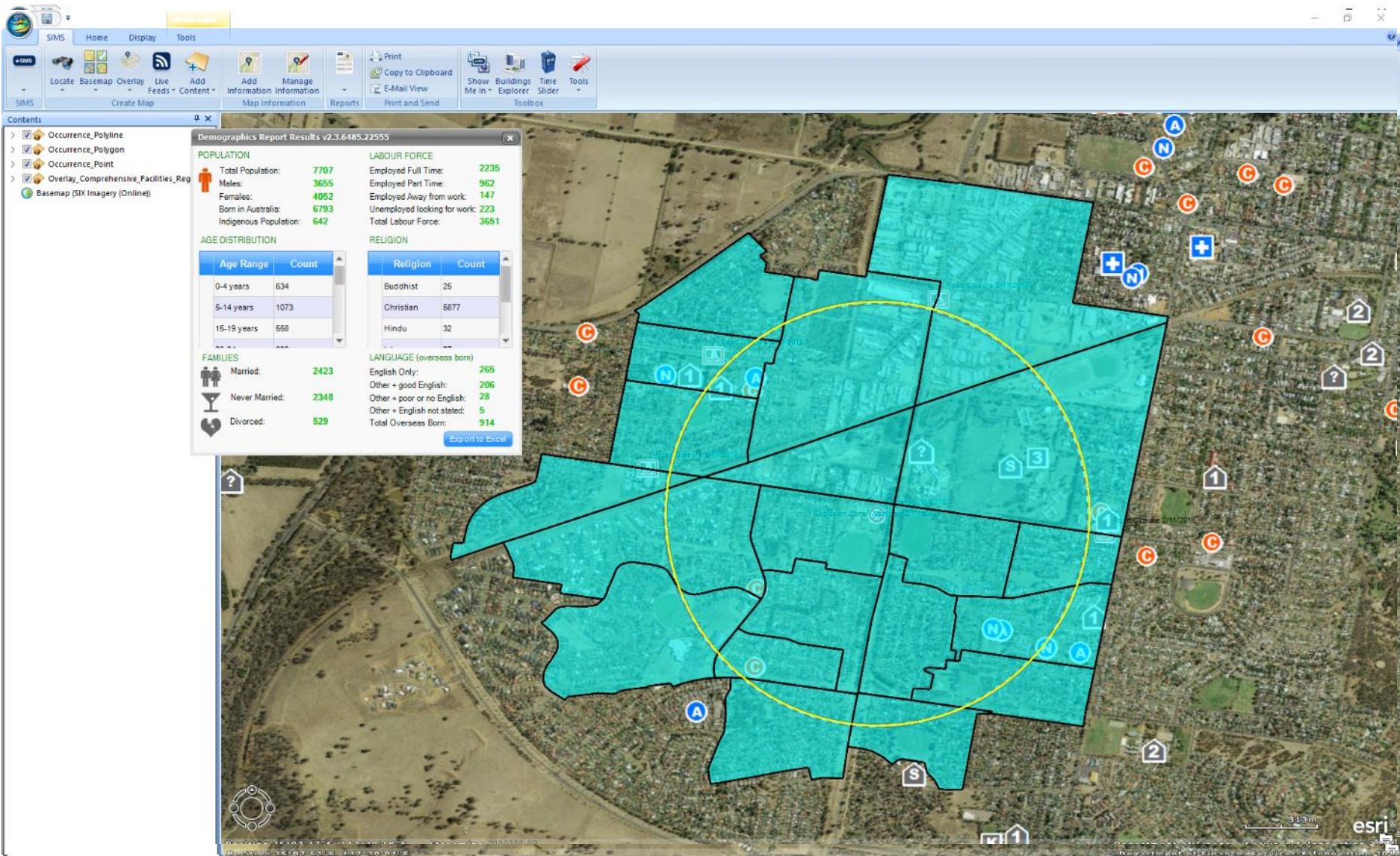
# SIMS

## SPATIAL INFORMATION & MAPPING SYSTEM

SIMS is a mini-GIS for non-GIS Users.



Training on SIMS takes three to four hours.



## ESSIL & SIMS RECIPIENTS

- State Crisis Centre
- State Emergency Operation Centre
- Government Coordination Centre
- Emergency Service Organisations
- Police Counter Terrorism Command
- Regional Emergency Management Officers
- Local Emergency Management Officers
- AGO & Defence
- Attorney Generals (Federal)
- Geoscience Australia
- Australian Federal Police
- ACT Emergency Services Agency
- Emergency Functional Areas - Health, Transport, Agriculture, Environment and Energy/Utilities.

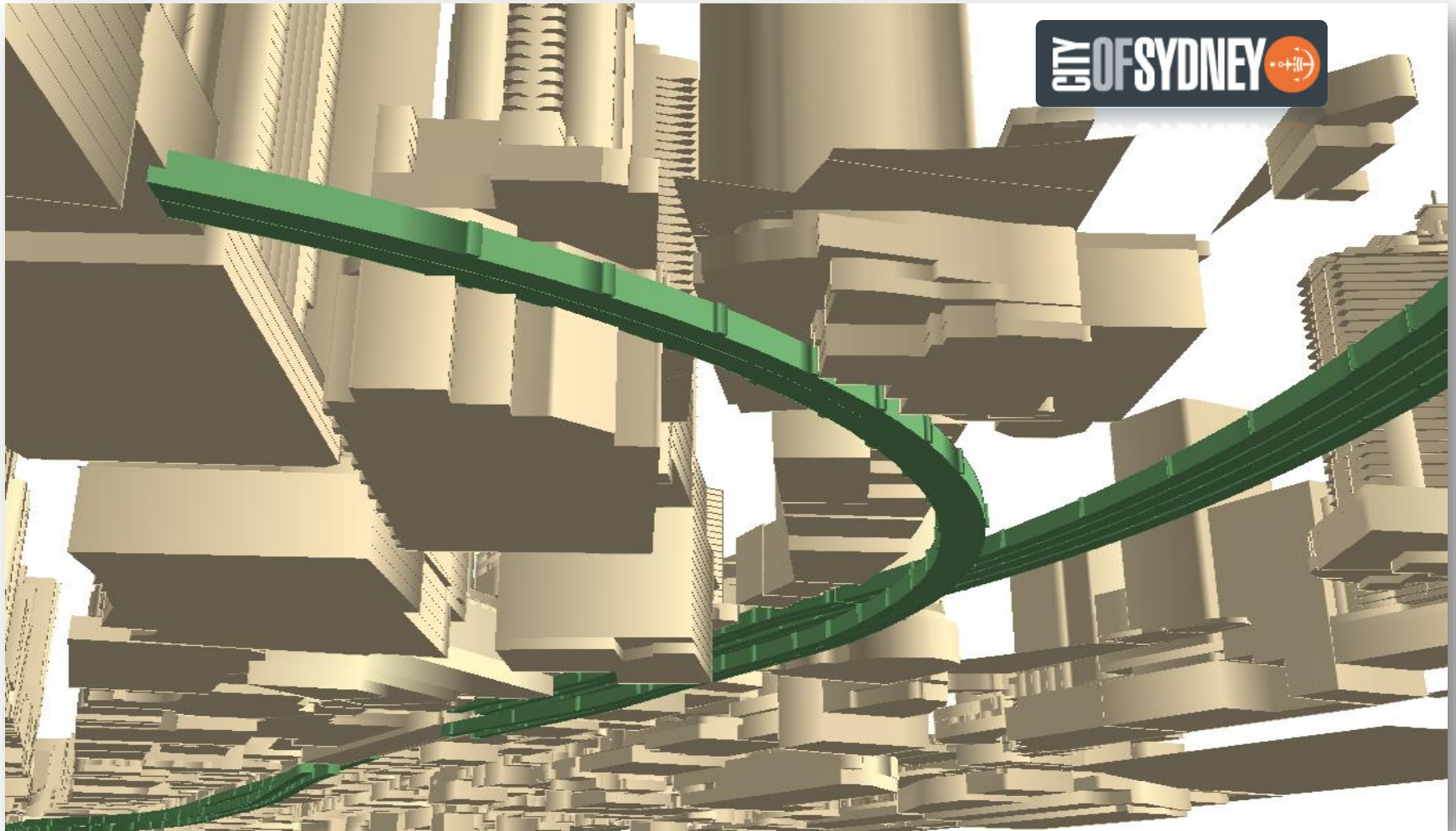


# ESSIL DELIVERY

- ESSIL is provided to the Emergency Management sector/ Local Government Areas as an ESRI file geodatabase supplied on an external Hard Drive Kit (HDK) along with the EICU developed SIMS application and other associated data
- HDKs are updated on a 6 monthly basis
- EICU are continuously receiving data from source agencies, therefore the update of ESSIL is an ongoing process



# BUILDING AND INFRASTRUCTURE DATABASE



## Spatial Innovation Program

# PARTNERSHIPS



Land & Property  
Information



Sponsors



The  
Treasury



Emergency Management NSW



Transport



Industry &  
Investment



Stakeholders

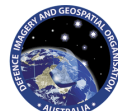


Sydney  
**WATER**



Transport  
Roads & Traffic  
Authority

Participants



NSW HEALTH



Australian Government  
Geoscience Australia

ipoh Sydney Olympic Park



Land & Property  
Management Authority  
State Property Authority



Land & Property  
Management Authority  
Sydney Harbour Foreshore Authority



Transport  
Construction  
Authority

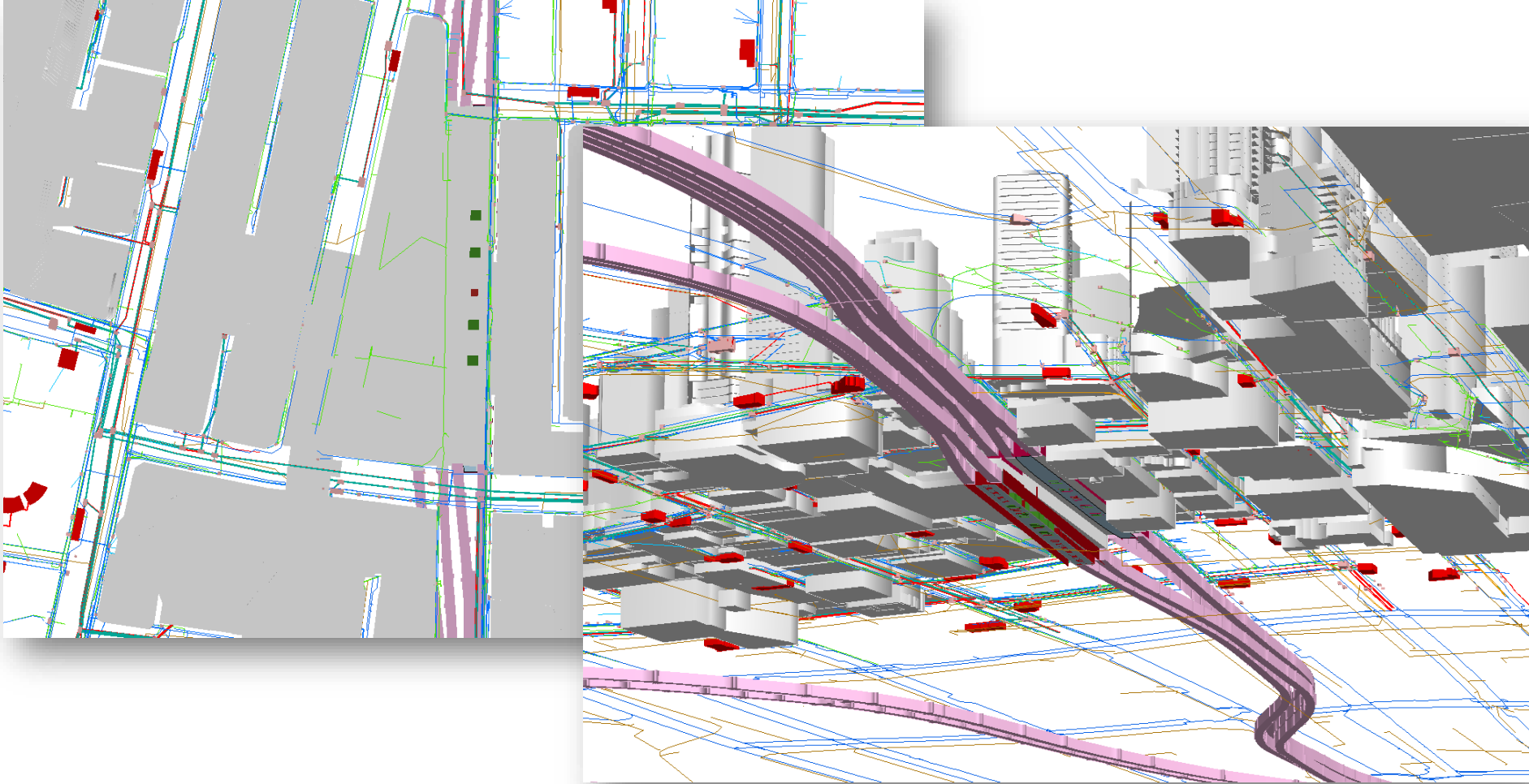


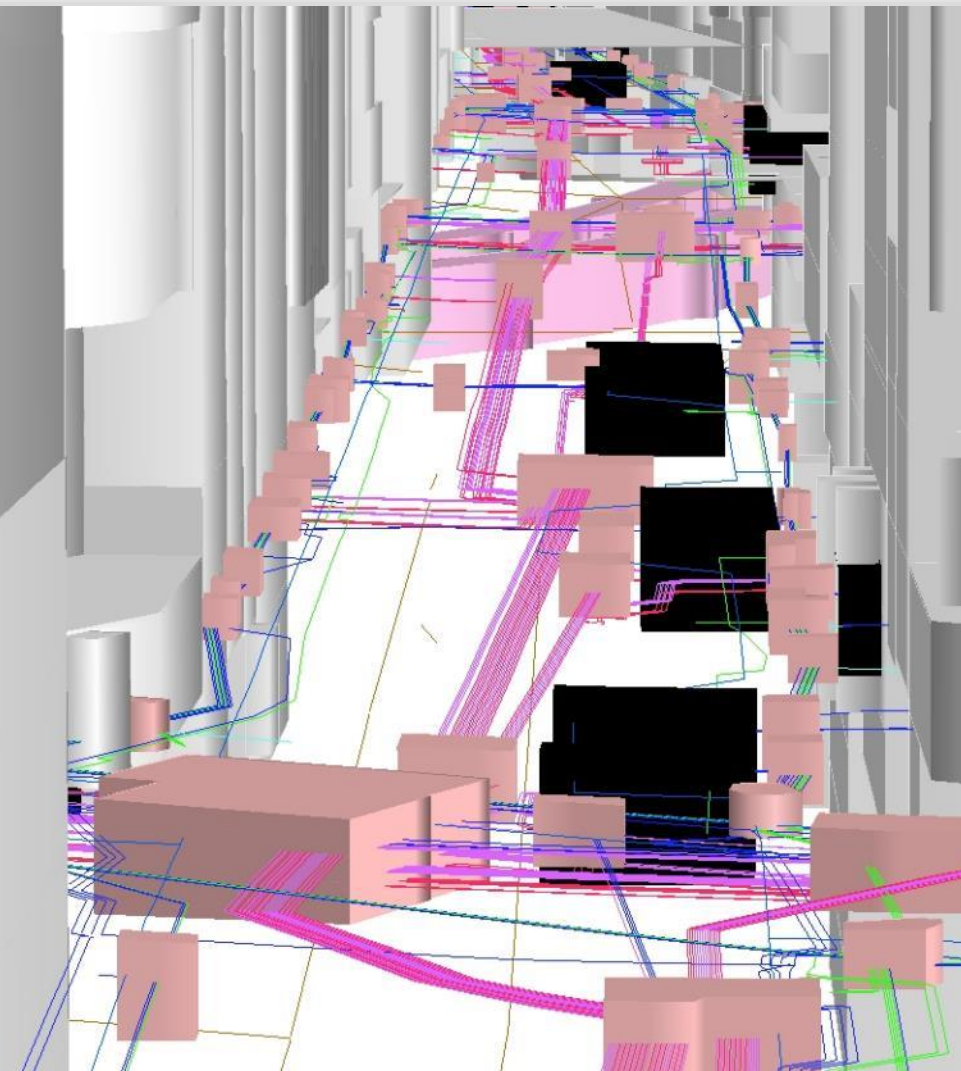
Education  
& Training



Transport  
RailCorp

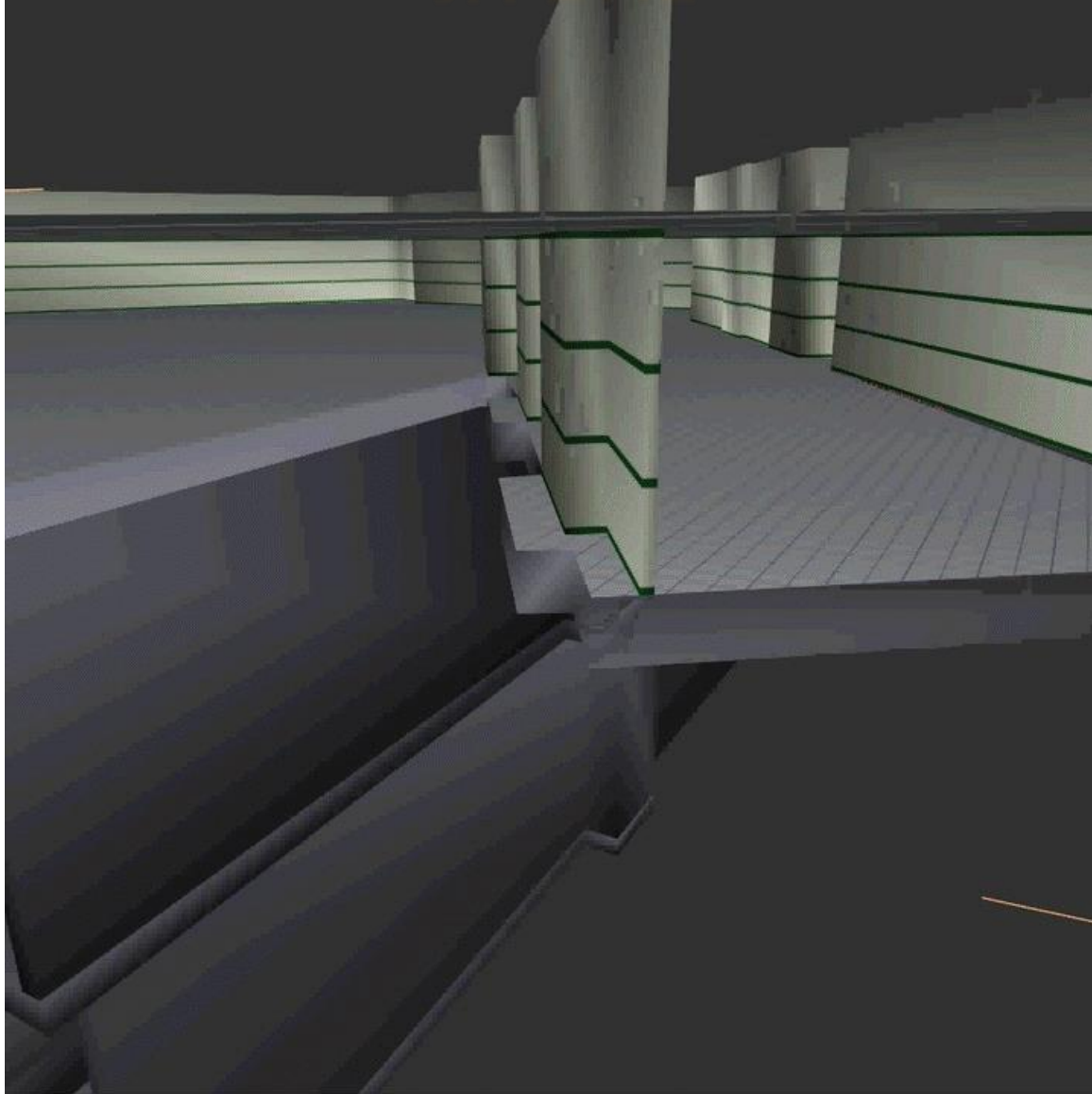
# 2D VERSE 3D





**ABOVE AND BELOW GROUND VIEWS**

# 3D PDF



# VIRTUAL ENVIRONMENTS

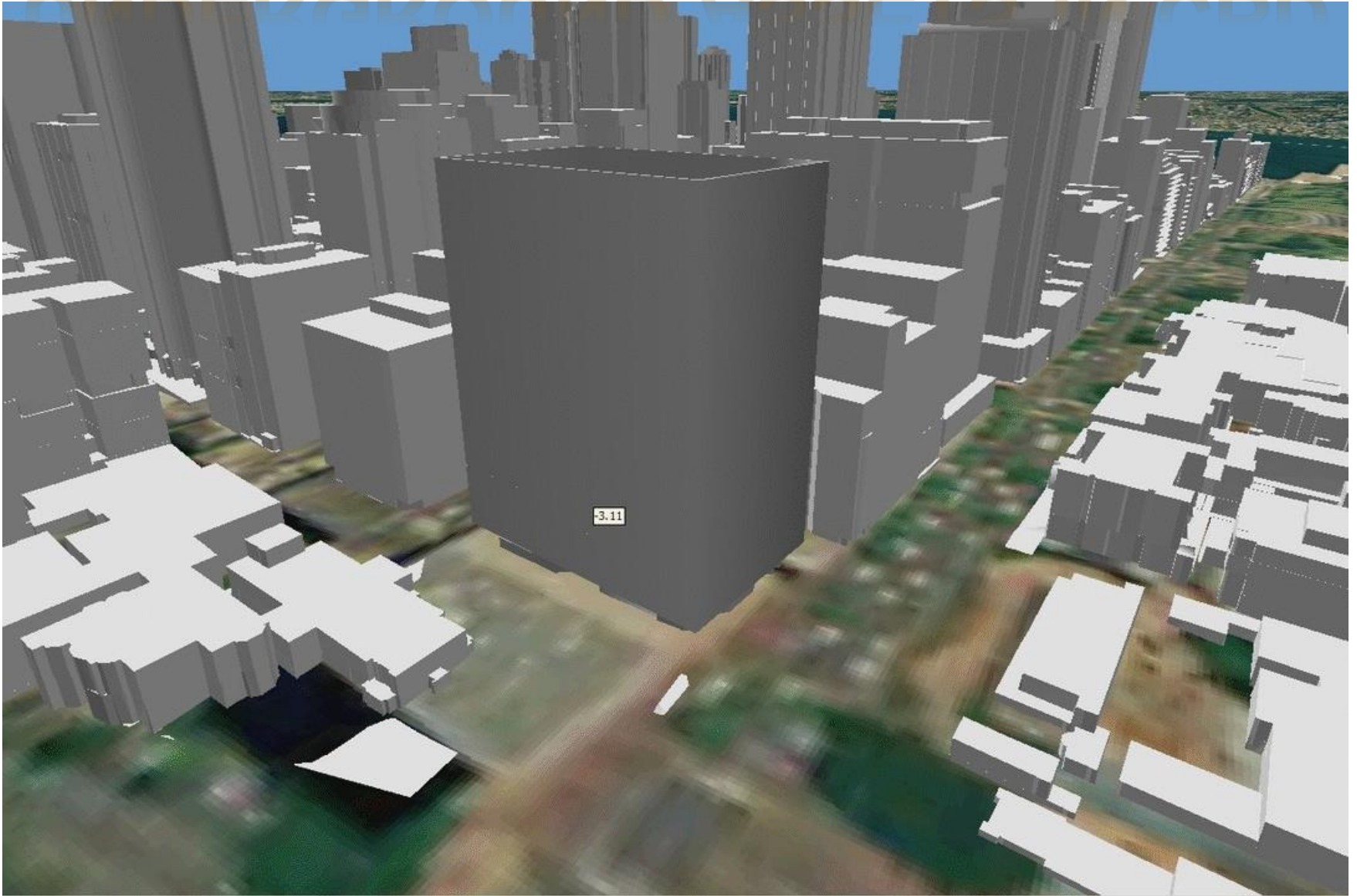


# EMERGENCY EXERCISES SIMULATION



- Interactive
- Multi Player
- Scenarios
- Exercises
- Walk throughs
- Real time tracking

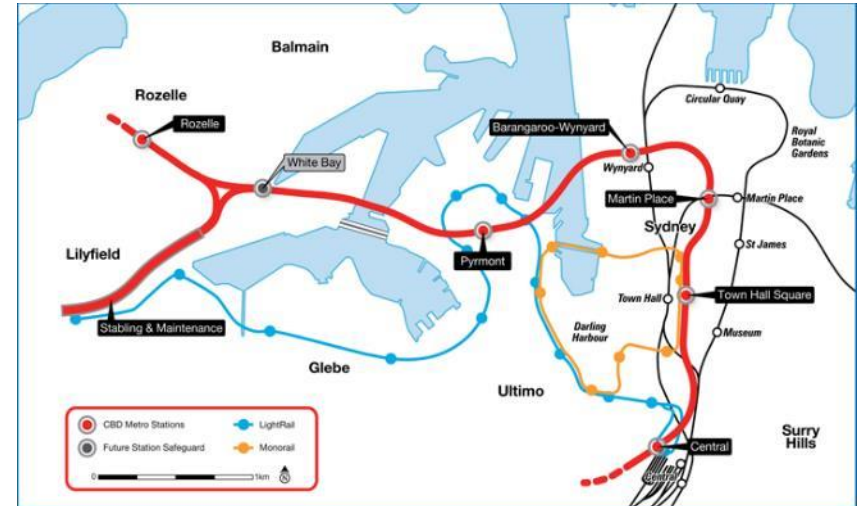
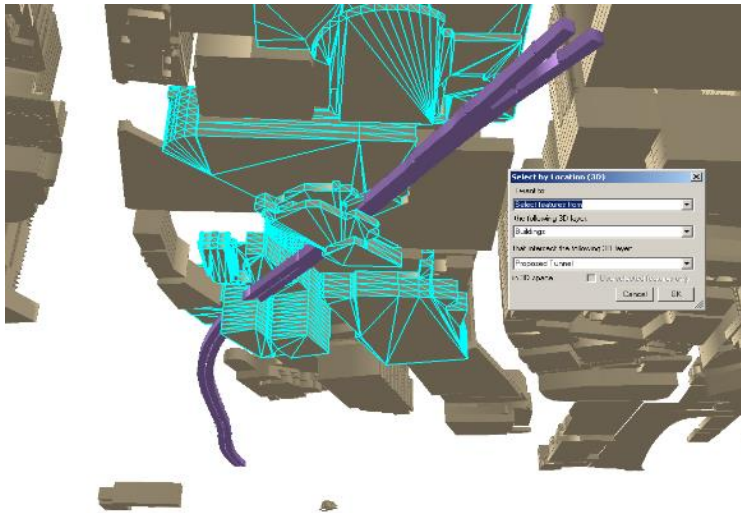
# UNDERGROUND ASSETS IN CBD



# PLANNING NEW INFRASTRUCTURE

Identifying the best route for  
City Metro tunnels

3D building basements used in  
planning process



# MINIMISE EXCAVATION ERRORS

Single point of reference where all data can be accessed

Data includes building basements and all tunnels

Data exchange incrementally improves the quality of the data



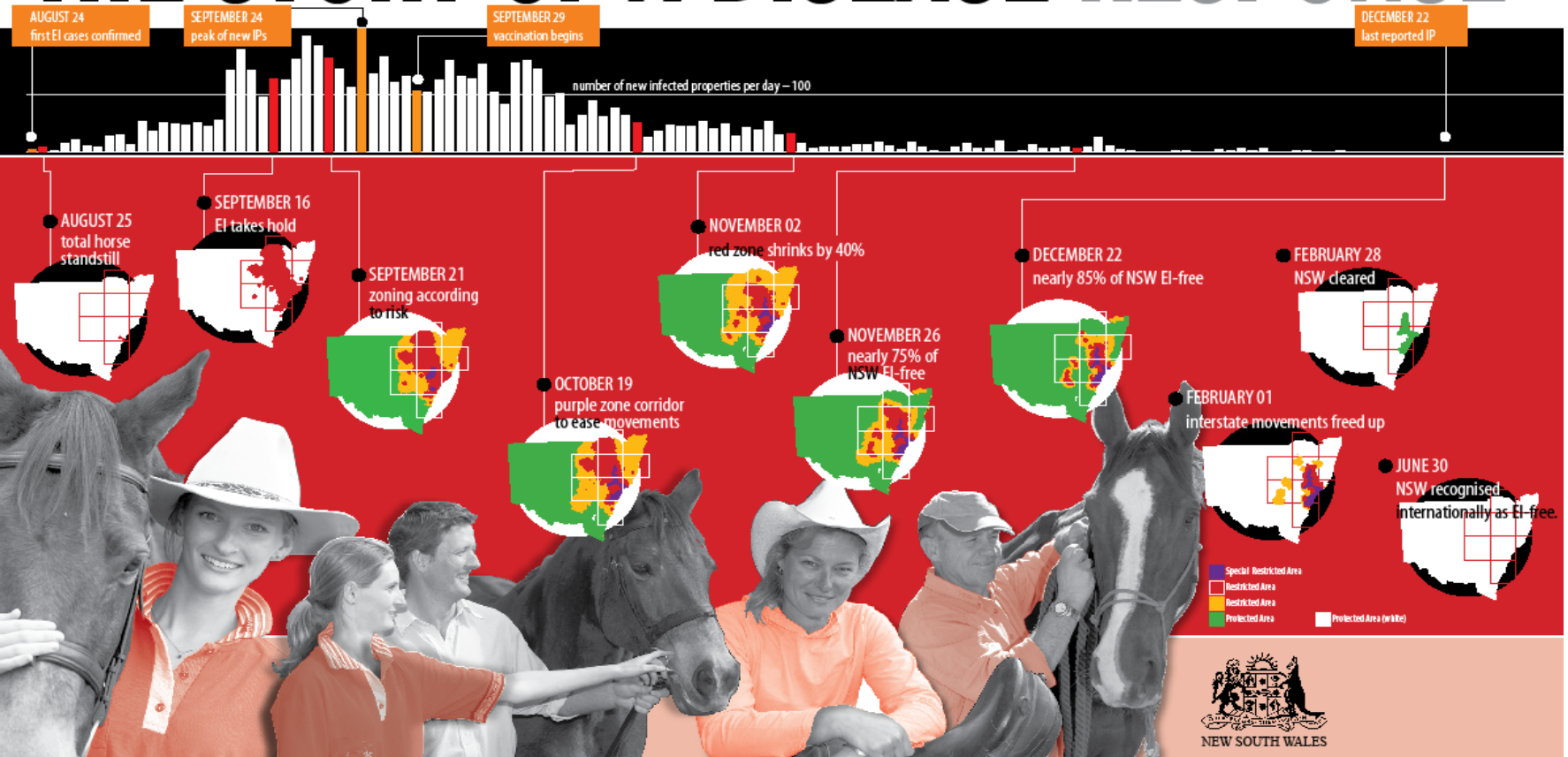
# MANHUNT FOR MALCOLM NADEN



# EQUINE INFLUENZA

## THE STORY OF A DISEASE RESPONSE

Control and eradication plan  
August 2007 – June 2008



ESSIL APPLICATION: EQUINE INFLUENZA 2007-08

# MAPPING FOR MAJOR EVENTS

*Assisting NSW Government Agencies in support of Major Events in NSW by utilising EICU's expertise in providing quality Spatial Services to the sector*

## 1. DATA

- Data Sourcing from all event organisers and agencies involved in the delivery of an event
- Any format (PDF, XL, DWG)

## 2. Maps & Event Database

- Ready for use formats – Google Earth KML / PDF maps and Online Mapping
- GIS Formats (GDB)
- One Stop Shop for event data

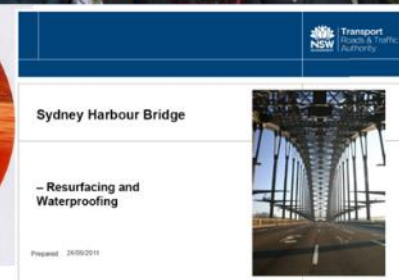
## 3. GCC Support

- EICU Staff in GCC
- Access to all Event data as well as extensive ESSIL DB and Map Production Capabilities

## 4. Benefits

- Easy to use Interfaces (Google Earth, PDF maps, Online Mapping)
- Have access to other agency data
- Planning for future events
- Custom Mapping by EICU

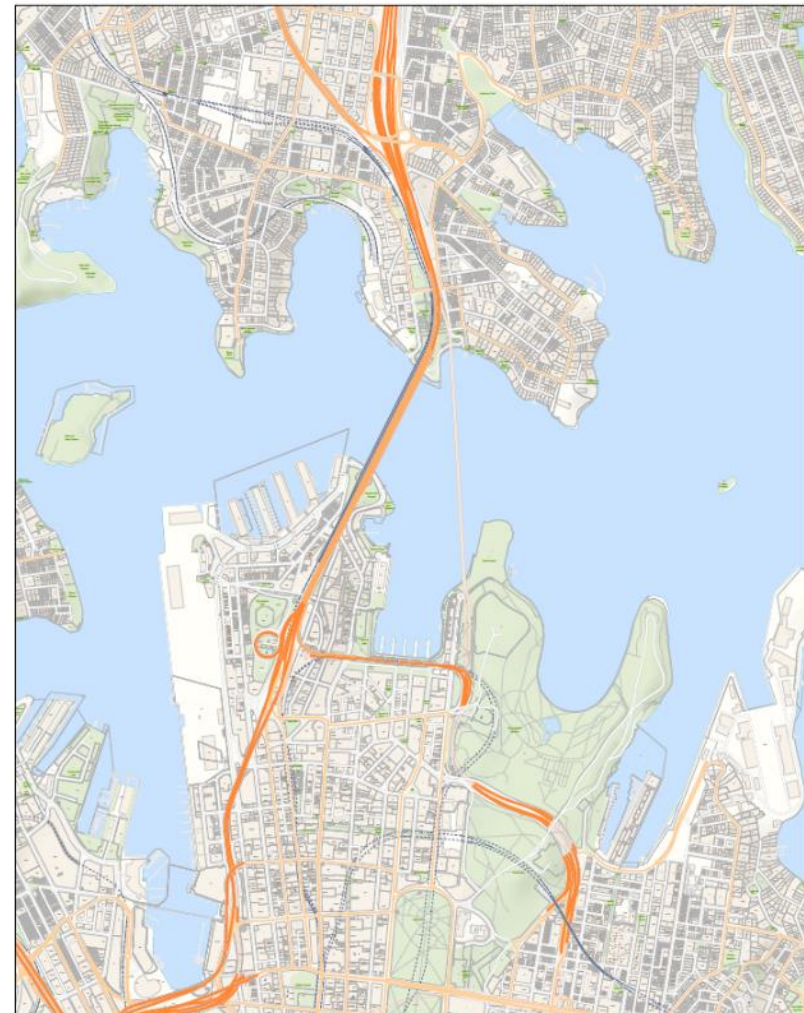
# SPECIAL EVENTS



# MAPS FOR PLANNING

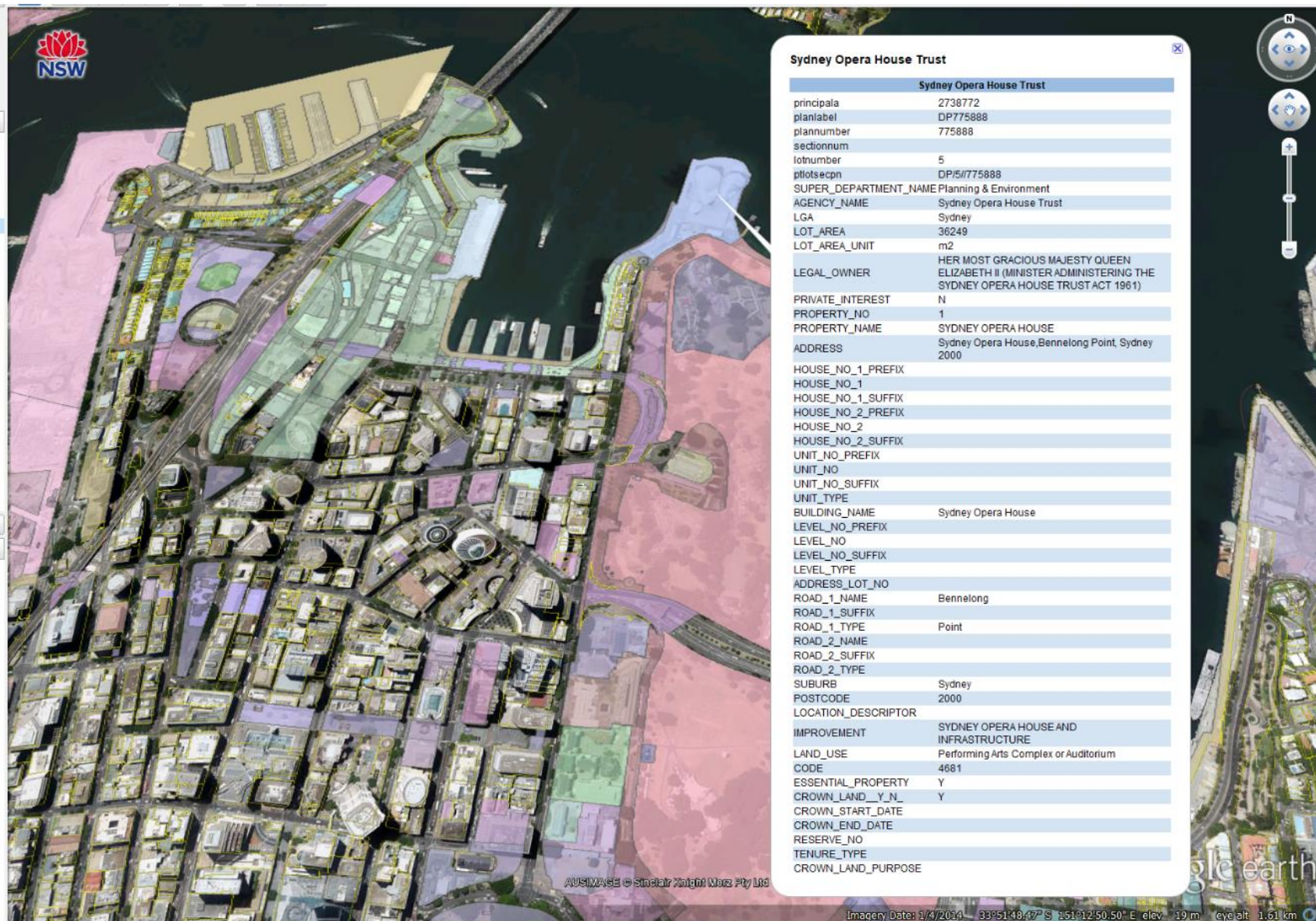


<b>LEGEND:</b> City of Sydney VMS Sydney Trains VMS RFG VMS RMS VMS Destination NSW VMS Property NSW VMS North Sydney VMS Opera House VMS NPSV VMS Sydney Bus VMS	<b>TITLE:</b> <b>VMS Distribution Map 2</b>  <b>VENUE:</b> <b>SYDNEY CBD &amp; SURROUNDS</b>	<b>EVENT:</b> <b>NYE 2016</b>  <b>SCALE:</b>  1:3,000	 <b>Spatial Services</b> <small>Disclaimer: The information contained in this map has been provided in good faith. Whilst all effort has been made to ensure its accuracy and completeness, the data provider has no responsibility for errors or omissions or any loss or damage that may result from the use of this information. Prepared for: Emergency Information Coordination Unit, Spatial Services, Department of Finance, Services &amp; Innovation</small> <b>DWG NO:</b> 3 of 36 <small>Date as at 20/12/2018          Printed on 20/12/2018</small>
---	--	--	--



	<b>TITLE:</b> <b>Sydney CBD Map Series</b> <b>Map 3 - Harbour Lights</b>  <b>VENUE:</b> <b>Harbour Lights</b>	<b>EVENT:</b> <b>VIVID SYDNEY 2018</b>  <b>SCALE:</b>  1:1,172	 <b>Spatial Services</b> <small>Disclaimer: The information contained in this map has been provided in good faith. Whilst all effort has been made to ensure its accuracy and completeness, the data provider has no responsibility for errors or omissions or any loss or damage that may result from the use of this information. Prepared for: Emergency Information Coordination Unit, Spatial Services, Dept. Finance, Services &amp; Innovation</small> <b>DWG NO:</b> 3 <small>Date as at 20/12/2018          Printed on 20/12/2018</small>
--	--	---	--

# GOVERNMENT OWNERSHIP – CONTROLLING AGENCY



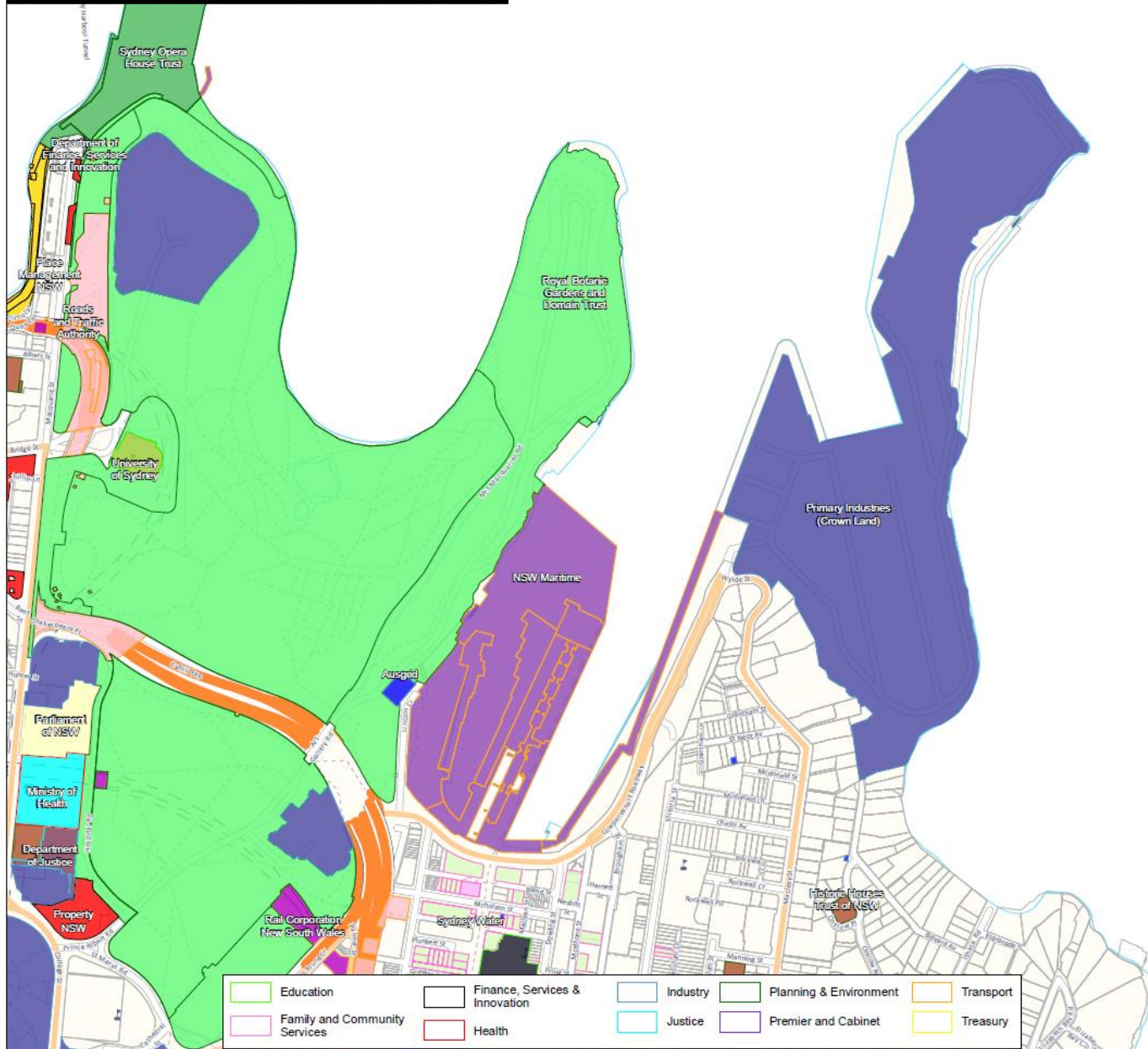
The image shows an aerial view of the Sydney Opera House and surrounding urban area. A data overlay panel on the right provides detailed information about the property and its ownership.

**Sydney Opera House Trust**

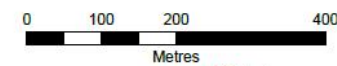
<b>Sydney Opera House Trust</b>	
principal	2738772
planlabel	DP775888
plannumber	775888
sectionnum	
lotnumber	5
ptlotsecpn	DP/5/775888
SUPER_DEPARTMENT_NAME	Planning & Environment
AGENCY_NAME	Sydney Opera House Trust
LGA	Sydney
LOT_AREA	36249
LOT_AREA_UNIT	m2
LEGAL_OWNER	HER MOST GRACIOUS MAJESTY QUEEN ELIZABETH II (MINISTER ADMINISTERING THE SYDNEY OPERA HOUSE TRUST ACT 1961)
PRIVATE_INTEREST	N
PROPERTY_NO	1
PROPERTY_NAME	SYDNEY OPERA HOUSE
ADDRESS	Sydney Opera House, Bennelong Point, Sydney 2000
HOUSE_NO_1_PREFIX	
HOUSE_NO_1	
HOUSE_NO_1_SUFFIX	
HOUSE_NO_2_PREFIX	
HOUSE_NO_2	
HOUSE_NO_2_SUFFIX	
UNIT_NO_PREFIX	
UNIT_NO	
UNIT_NO_SUFFIX	
UNIT_TYPE	
BUILDING_NAME	Sydney Opera House
LEVEL_NO_PREFIX	
LEVEL_NO	
LEVEL_NO_SUFFIX	
LEVEL_TYPE	
ADDRESS_LOT_NO	
ROAD_1_NAME	Bennelong
ROAD_1_SUFFIX	
ROAD_1_TYPE	Point
ROAD_2_NAME	
ROAD_2_SUFFIX	
ROAD_2_TYPE	
SUBURB	Sydney
POSTCODE	2000
LOCATION_DESCRIPTOR	
IMPROVEMENT	SYDNEY OPERA HOUSE AND INFRASTRUCTURE
LAND_USE	Performing Arts Complex or Auditorium
CODE	4681
ESSENTIAL_PROPERTY	Y
CROWN_LAND_Y_N	Y
CROWN_START_DATE	
CROWN_END_DATE	
RESERVE_NO	
TENURE_TYPE	
CROWN_LAND_PURPOSE	

Imagery Date: 1/4/2014 - 33°51'48.47" S 151°12'50.50" E elev: 19 m eye alt: 1.51 km

# Government Land - Responsible Agency



- Department of Education
- University of Sydney
- Department of Finance, Services and Innovation
- Place Management NSW
- Property NSW
- Ausgrid
- Primary Industries (Crown Land)
- Sydney Water
- Department of Justice
- Historic Houses Trust of NSW
- Royal Botanic Gardens and Domain Trust
- Sydney Opera House Trust
- NSW Maritime
- Rail Corporation New South Wales
- Roads and Traffic Authority
- Parliament of NSW
- Aboriginal Housing Office
- NSW Land and Housing Corporation
- Ministry of Health
- Non-Government



Disclaimer: The information contained in this map has been provided for general information only. While all efforts have been made to ensure the accuracy of the information, the data providers take no responsibility for errors or omissions, or any loss or damage that may result from the use of this information.

Prepared by: Emergency Information Coordination Unit, Spatial Services

**NSW** GOVERNMENT **Spatial Services**

Google Earth EC

File Edit View Tools Add Help

Search

Address / Lot / POI / Property Suburb

Search History

Places

- Vivid2018
  - Crowd Capacity Measurement GCC
  - Bus Transport Plan
  - Checkpoint
  - Crowd Management Plan
  - Emergency Facility
  - Evacuation Point
  - Event Precinct
  - Event Route
  - Exclusion Zone
  - Gate
  - Navigation Aid
  - Power Cable
  - Public Facility
  - Rail Station
  - Road Closure L2b
  - SEC L2a\_2b
  - SEC Taronga
  - Security Position
  - Sign
  - Structure Area
  - Structure Point
  - Taxi Rank
  - Traffic Control Line
  - Traffic Control Plan

Layers

- globe.six.nsw.gov.au/nswglobe/
  - Imagery
  - Terrain
  - Contour
  - New South Wales GLOBE Information
    - Additional Imagery
    - Administrative Boundaries
    - Address
    - Australian Bureau of Statistics data
    - Points of Interest
    - Positioning
    - Historical
    - Land Parcel & Property
    - Transport

TCP 26

TCP 26	
SupplyDate	17/05/2018
EventName	Vivid 2018
SrcLayer	ESPA pdfs
SrcAgency	Event & Sports Projects Australia
AssetType	Traffic Control Point
AssetID	TCP 26
FeatureName	TCP 26 Macquarie St & Albert St
Description	Level 1, 2a & 2b, 3, 4
SymbolName	TCP
AdditionalInfo	TCP 26.pdf
Suburb	Sydney
KML_Link	<a href="#">TCP 26.pdf</a>

Directions: [To here](#) - [From here](#)

Google earth

33°51'14.66" S 151°12'47.45" E elev 0 m eye alt 850 m



## Layers

## Road Names

## Administration

## Built Facility

## Structure Point

## Public Facility

## Power Cable

## Crowd Control

## Crowd Management Plan

## CheckPoint

## Barrier

## Emergency Management

## Security Position

## Access Route

## Transport

## Exclusion Zone

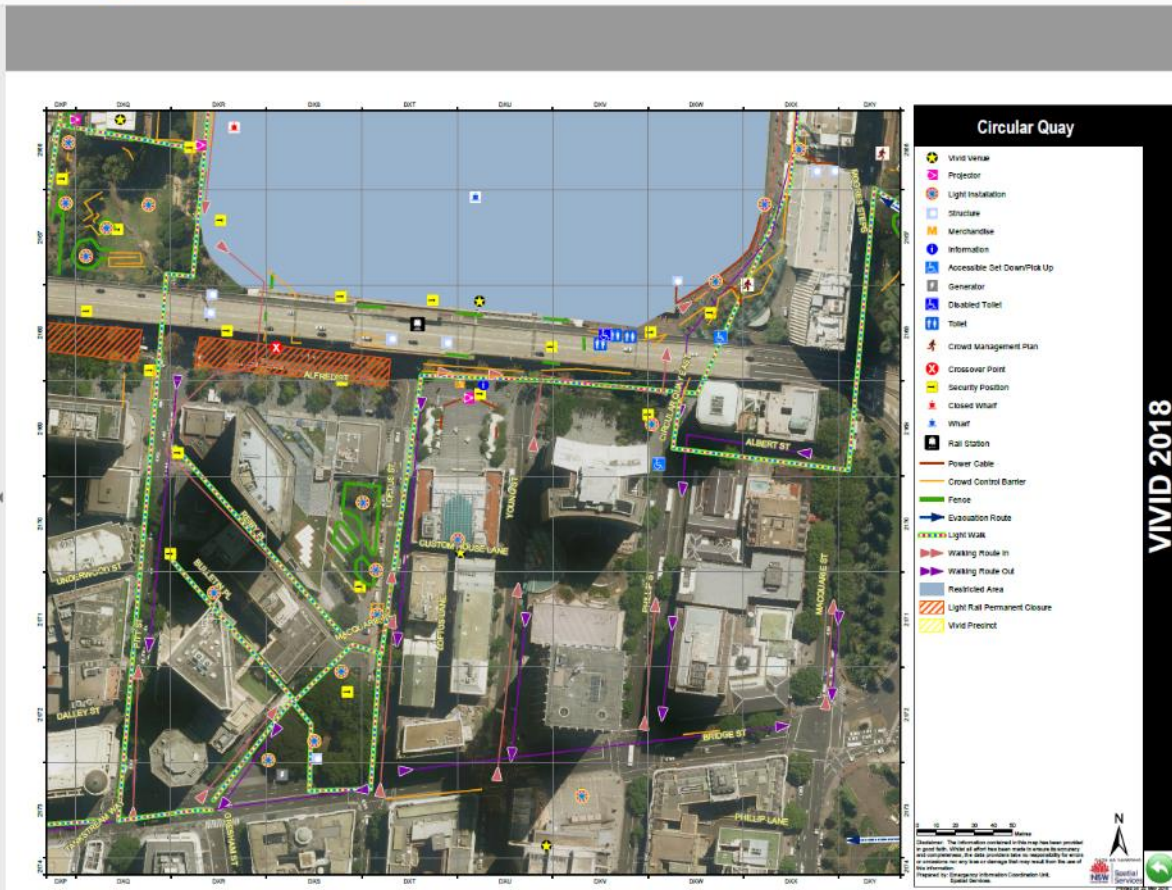
## Event Precinct

## Aerial Imagery

## Sydways

## Grids

## Surrounds



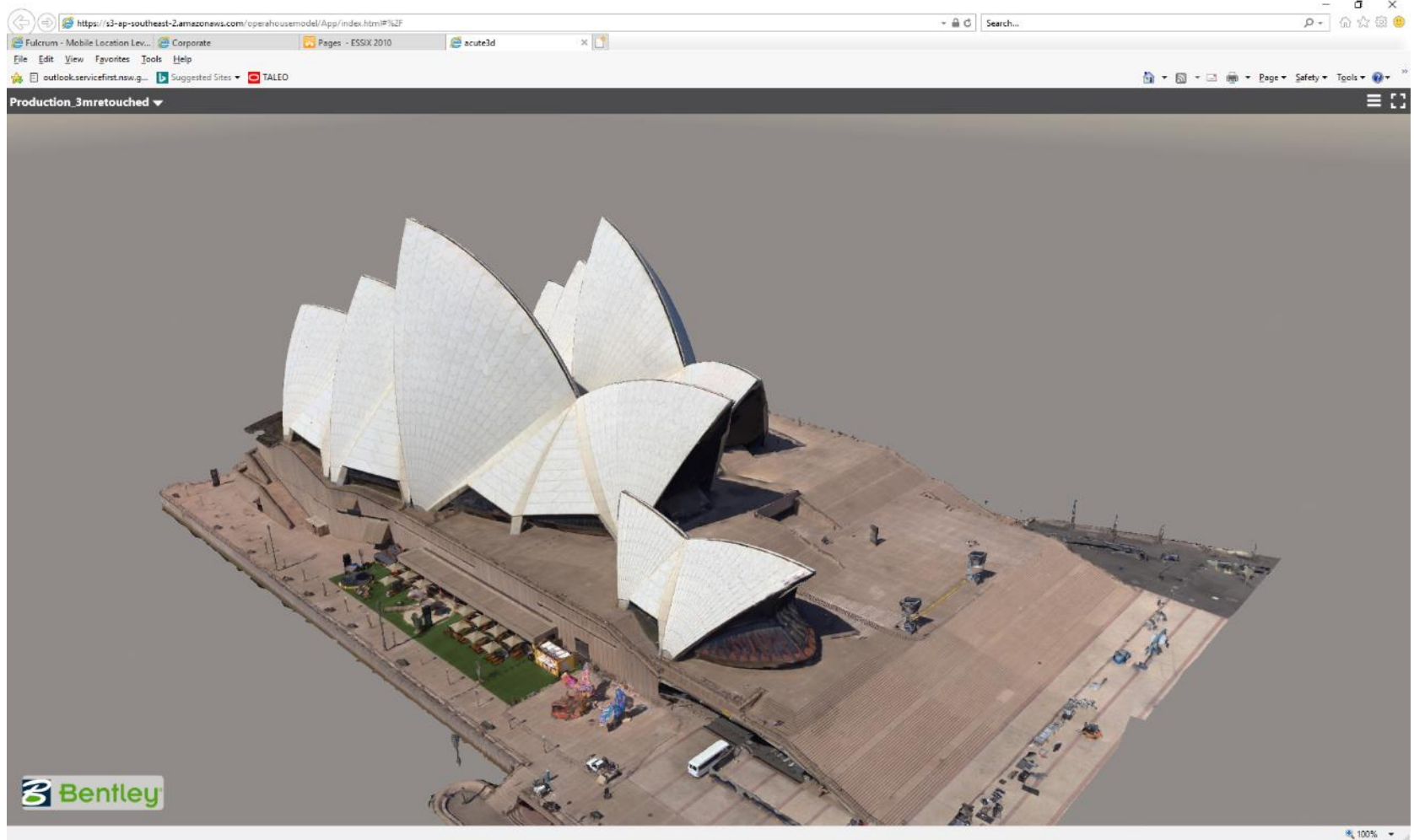
- Export PDF
- Create PDF
- Edit PDF
- Comment
- Combine Files
- Organize Pages
- Redact
- Protect
- Optimize PDF
- Fill & Sign
- Send for Signature
- Send & Track
- More Tools

Store and share files in the Document Cloud

[Learn More](#)



# POTENTIAL FUTURE CAPABILITIES FOR EVENT MANAGEMENT





# SPLENDOUR IN THE GRASS 2018





# OPERATIONAL SUPPORT




# IMPACT ASSESSMENTS – RAPID DAMAGE ASSESSMENTS

Google Earth EC  
File Edit View Tools Add Help

▼ Search  
Address / Lot / POI / Property Suburb  
Search  
History

▼ Places  
☐ My Places  
☒ Sightseeing Tour  
 Make sure 3D Buildings layer is checked  
☒ Temporary Places  
☒ Degree of Damage

▼ Layers  
☒ globe.six.nsw.gov.au/nswglobe/  
☒ Imagery  
☒ Terrain  
☐ Contour  
☒ New South Wales GLOBE Information  
☐ Additional Imagery  
☐ Administrative Boundaries



**NSW Storm 4th June 2016**

NSW Storm 4th June 2016	
SHAPE	Point
Create Date	7/06/2016
SourceGlobal ID	{CE7343FE-4424-4E83-B76C-79F4A38229FB}
Start DateTime	
Modify User	rda9@fire.nsw.gov.au
Modify DateTime	7/06/2016
Property Id	
Source ID	
Assessment Officer	9294
Title of Assessment Officer	
Team ID	rda9@fire.nsw.gov.au
Date of Inspection	7/06/2016
Agency	Fire & Rescue NSW
Event ID	
Event Name	NSW Storm 4th June 2016
Event Type	Storm
Area Inspected	Exterior only
Position	
Property Number	1142
Street Name	Pittwater Road
Street Type	Street
Suburb Name	Collaroy
State	NSW
Postcode	2097
Country	AU
Long Address	1142 Pittwater Road Collaroy NSW 2097 AU
Guras Address	1142 PITTWATER ROAD COLLAROY
Latitude	-33.726475
Longitude	151.299571
Work Site Boundary Description	
Owner or Contact Name	
Contact Number	
Permission to Enter	Undetermined
Initial Degree of Damage	ConductAssessment
Property Insured	Undetermined
Content Insured	Undetermined
Building Use	Residential, Separate Dwelling, 110
Foundations	
Structure	1
Roof	Tile

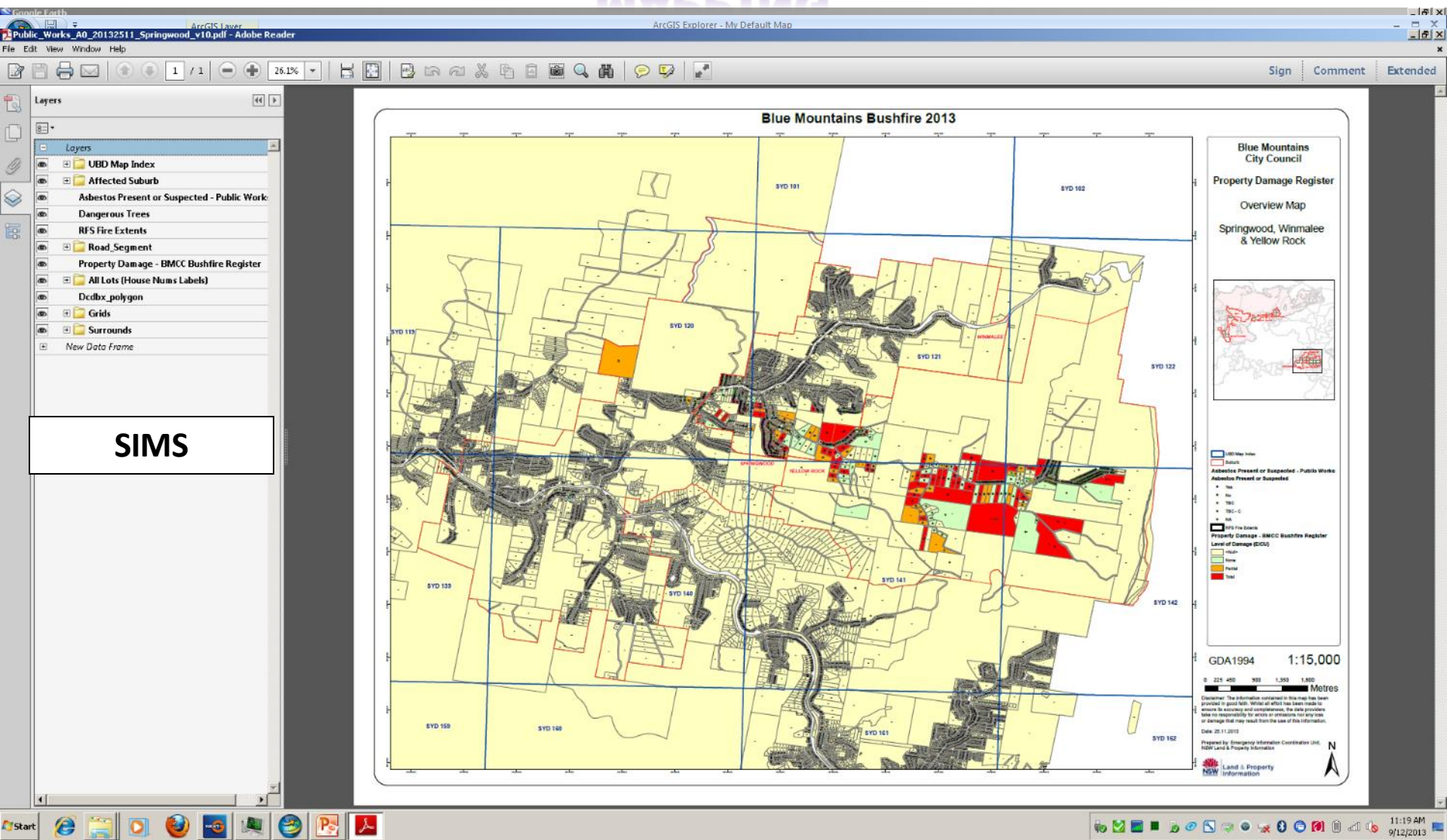
## **IMPACT ASSESSMENTS – RAPID DAMAGE ASSESSMENTS PROCESSING DATA**

- Major Weather Event or Bushfire
  - Widespread Impact on or Destruction of Property
  - SERCON activates Impact Assessment Data Sharing Arrangements
  - Once safe to do so, responding ESOs begin collection of data
  - After day of collecting data, data fed into EICU, internet, email, carrier pigeon
  - EICU process data and transform it using FME into 1 data schema
  - EICU produces Maps, KML files, Excel tables, GIS data
  - And repeat....
- 
- For the recent Tathra Bushfire in March 2017, data updates were received daily until cleanup finished in June

# IMPACT ASSESSMENT – BLUE MOUNTAINS

NSW PW Council 15.11.13 [Compatibility Mode] - Microsoft Excel																		
File Home Insert Page Layout Formulas Data Review View Acrobat																		
Clipboard Font Alignment Number Conditional Formatting Styles Cells Editing																		
B552 30/10/2013																		
lic Works Spreadsheet																		
Make Safe Works																		
Assessment ID Date Address Number Address Street Address Suburb Asbestos Insp by PB or PW Asbestos Inspection Comments Structural Inspection Complete Structural Work Required Council Registered Year Built Owner & Contact No. Allowed to Enter Est. building damage from Council Council & Workcover Comments Workcover Notified by others Completed Date complete Comments																		
RD1-01 22-Oct-13 46 C Birdwood Ave SPRINGWOOD Yes Fibre cement debris from eaves only Yes No Yes 1992 Mark Lindsay David May 0427814355 Yes 75-100%																		
RD1-02 22-Oct-13 46 A Birdwood Ave SPRINGWOOD Yes PB advised no suspected asbestos was evident Yes Yes 1991 Matthew Peak or Marie Peake Yes 75-100%																		
RD1-03 22-Oct-13 49 Birdwood Ave SPRINGWOOD Yes PB advised no suspected asbestos was evident Yes Yes 1991 Matthew Peak or Marie Peake Yes 75-100%																		
RD1-04 22-Oct-13 156 Hawkesbury Rd SPRINGWOOD Yes PB advised no suspected asbestos was evident Yes Yes 1991 Matthew Peak or Marie Peake Yes 75-100%																		
RD1-05 22-Oct-13 158 Hawkesbury Rd SPRINGWOOD Yes PB advised no suspected asbestos was evident Yes Yes 1991 Matthew Peak or Marie Peake Yes 75-100%																		
RD1-06 22-Oct-13 160 Hawkesbury Rd SPRINGWOOD Yes PB advised no suspected asbestos was evident Yes Yes 1991 Matthew Peak or Marie Peake Yes 75-100%																		
RD1-07 22-Oct-13 173 Hawkesbury Rd SPRINGWOOD Yes PB advised no suspected asbestos was evident Yes Yes 1991 Matthew Peak or Marie Peake Yes 75-100%																		
RD1-08 22-Oct-13 171a Hawkesbury Rd SPRINGWOOD Yes PB advised no suspected asbestos was evident Yes Yes 1991 Matthew Peak or Marie Peake Yes 75-100%																		
PW-179-C 12-Nov-13 1 Sunnyridge Rd WINMALEE Yes PB advised no suspected asbestos was evident Yes Yes 1991 Matthew Peak or Marie Peake Yes 75-100%																		
RD1-01 22-Oct-13 5 Sunnyridge Rd SPRINGWOOD Yes PB advised no suspected asbestos was evident Yes Yes 1991 Matthew Peak or Marie Peake Yes 75-100%																		
RD1-01 22-Oct-13 9 Sunnyridge Rd WINMALEE Yes PB advised no suspected asbestos was evident Yes Yes 1991 Matthew Peak or Marie Peake Yes 75-100%																		
PW-108-c 02-Nov-13 10 Sunnyridge Rd WINMALEE Yes PB advised no suspected asbestos was evident Yes Yes 1991 Matthew Peak or Marie Peake Yes 75-100%																		
RD1-02 22-Oct-13 11 Sunnyridge Rd WINMALEE Yes PB advised no suspected asbestos was evident Yes Yes 1991 Matthew Peak or Marie Peake Yes 75-100%																		
PW-109-c 02-Nov-13 14 Sunnyridge Rd WINMALEE Yes PB advised no suspected asbestos was evident Yes Yes 1991 Matthew Peak or Marie Peake Yes 75-100%																		
PW-47-C 28-Oct-13 7 Emma Pde WINMALEE Yes PB advised no suspected asbestos was evident Yes Yes 1991 Matthew Peak or Marie Peake Yes 75-100%																		
PW-140-C 07-Nov-13 10 Emma Pde WINMALEE Yes PB advised no suspected asbestos was evident Yes Yes 1991 Matthew Peak or Marie Peake Yes 75-100%																		
PW-112-c 03-Nov-13 12 Emma Pde WINMALEE Yes PB advised no suspected asbestos was evident Yes Yes 1991 Matthew Peak or Marie Peake Yes 75-100%																		
RD1-01 22-Oct-13 13 Emma pde WINMALEE Yes PB advised no suspected asbestos was evident Yes Yes 1991 Matthew Peak or Marie Peake Yes 75-100%																		

# BLUE MOUNTAINS 2013 BUSHFIRE RECOVERY MAPPING



# DAMAGE ASSESSMENT PRODUCTS

KMZ

[Property Damage](#), Property Status,

Asbestos and Inundation

PDF

[Excel Pivot Tables](#)/Chart Map

Property Affected Cadastre Maps

File Geodatabase/ Shape files/ Tab files



# KML FILES – GOOGLE EARTH

**Search**  
Address / Lot / POI / Property Suburb  
Search  
History

**Places**  
My Places  
Sightseeing Tour  
Make sure 3D Buildings layer is checked  
Temporary Places  
Property Damage  
Property Damage

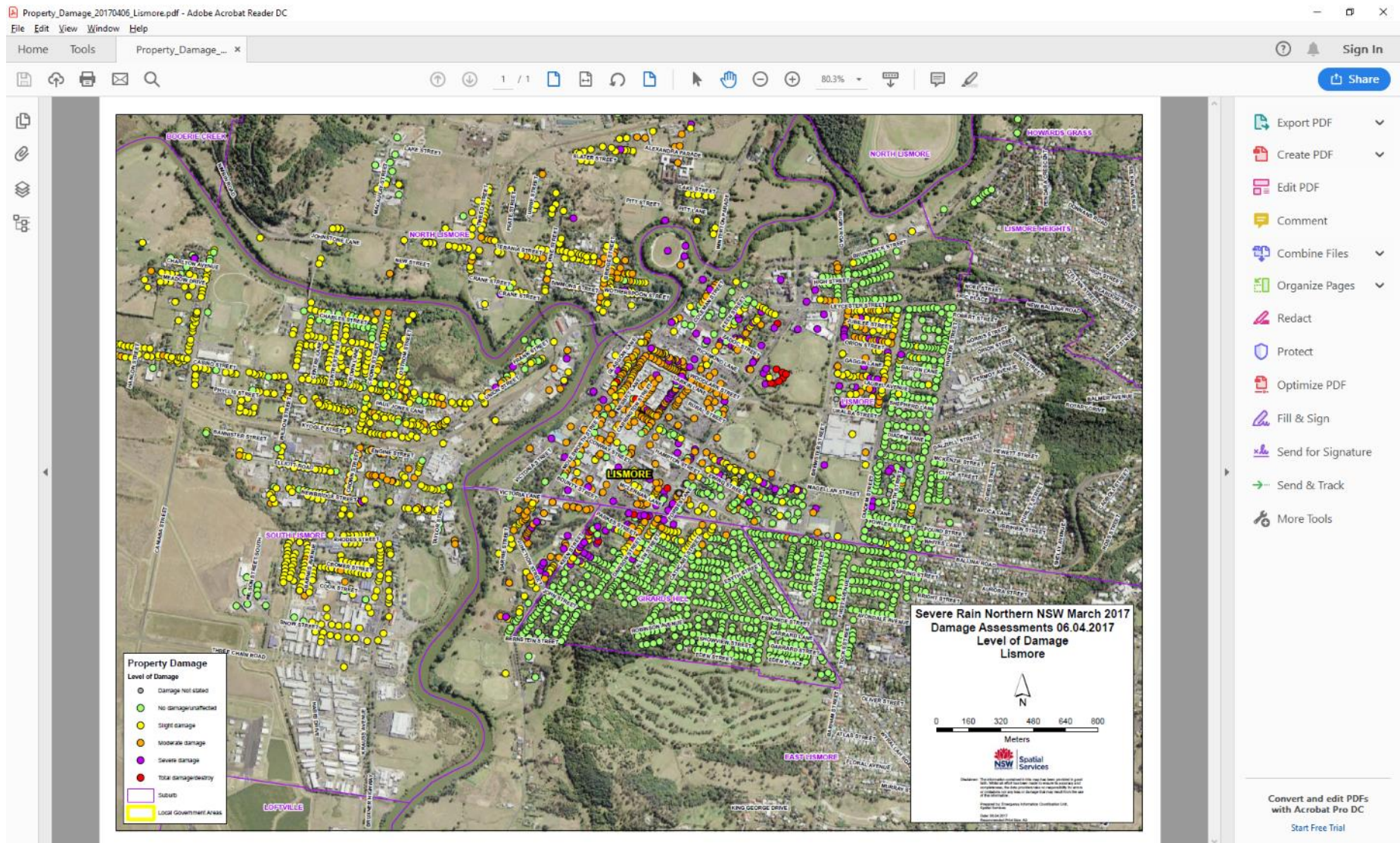
**Layers**  
globe.six.nsw.gov.au/nswglobe/  
Imagery  
Terrain  
Contour  
New South Wales GLOBE Information  
Additional Imagery  
Administrative Boundaries  
Address  
Australian Bureau of Statistics data  
Points of Interest  
Education  
Health  
Places  
Positioning  
Historical  
Land Parcel & Property  
Transport

**Total damage/destroy**

Total damage/destroy	
Create Date	3/04/2017 11:40:20 AM
SourceGlobal ID	(58855477-174F-4624-9F4F-820D1670119F)
Modify DateTime	3/04/2017 12:43:47 PM
Property Id	1813204
Assessment Officer	5819
Team ID	rd8@fire.nsw.gov.au
Date of Inspection	3/04/2017 11:46:24 AM
Agency	Fire & Rescue NSW
Event Name	Severe Rain Northern NSW March 2017
Event Type	Flood
Area Inspected	Interior & Exterior
Position	Damage Assessment
Property Number	21-31
Street Name	Durrington Street
Street Type	
Suburb Name	South Murwillumbah
State	NSW
Postcode	2484
Country	AU
Long Address	21-31 Durrington Street South Murwillumbah NSW 2484 AU
Guras Address	21-31 DURRINGTON STREET SOUTH MURWILLUMBAH
Latitude	-28.329177
Longitude	153.406349
Owner or Contact Name	JB Bulk Haulage, Davrose Bulk Haulage & Barneys Ha
Contact Number	428757038
Initial Degree of Damage	Total damage/destroy
Property Insured	No
Content Insured	No
Building Use	Business/Commercial/Factory/Manufacturing,180
Foundations	Concrete slab
Structure	Fixed
Asbestos	
Dangerous Trees	
Property Status	Not stated / inadequately
Degree of Damage	
Water Inundation	
Maximum Water Level	Unable to determine
Washout Required	no
URL	

Directions: [To here](#) - [From here](#)

# GEOPDF MAPS



# MAP SERIES

Property\_Damage\_20170409\_MapSeries.pdf - Adobe Acrobat Reader DC

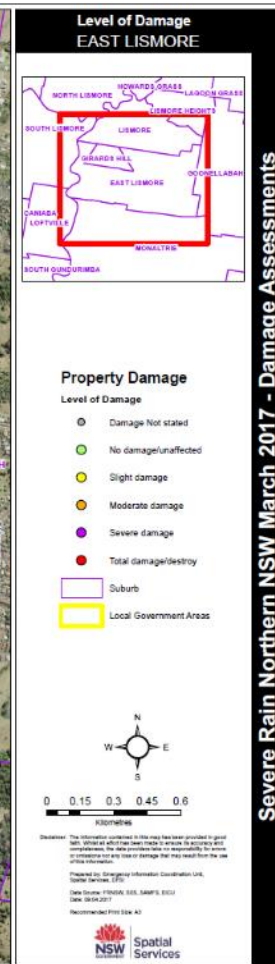
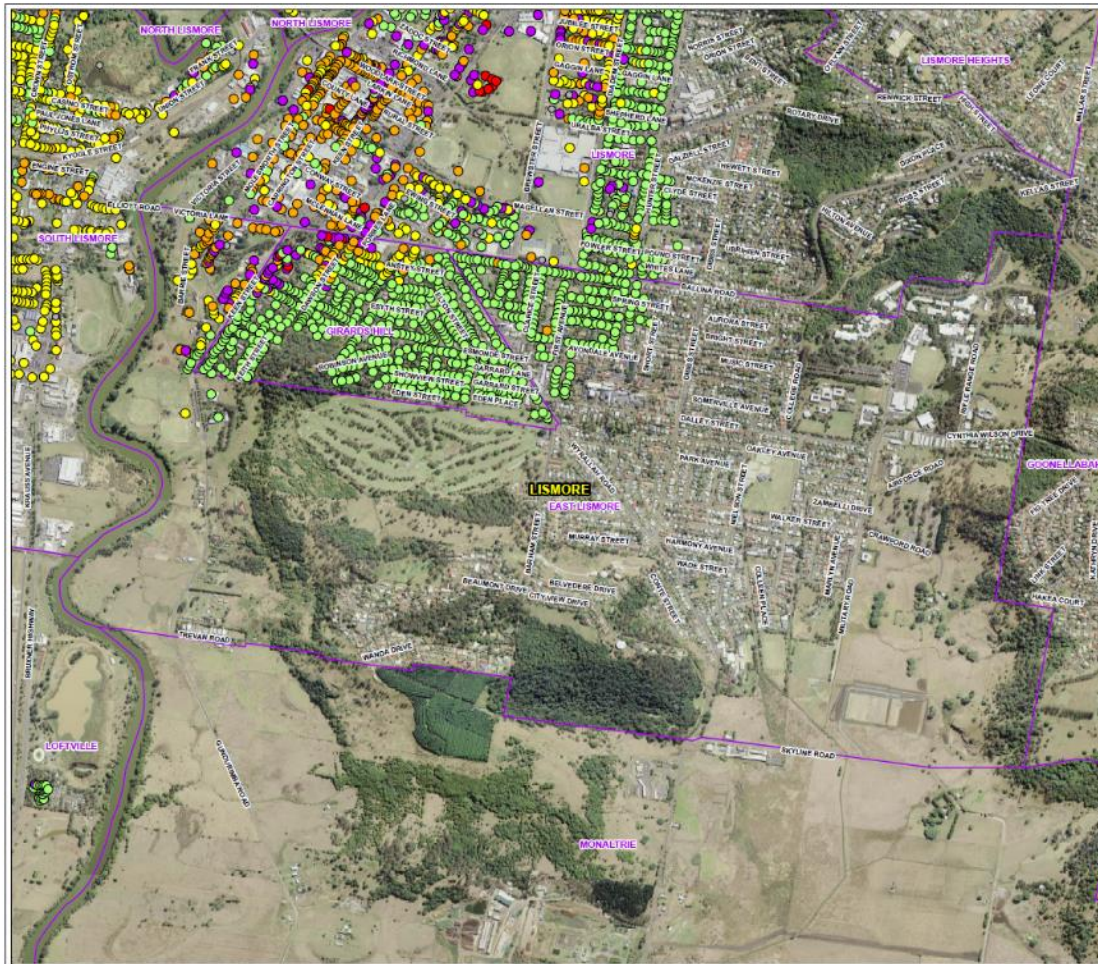
File Edit View Window Help

Home Tools Property\_Damage\_20170409\_MapSeries.pdf

Sign In

Share

15 / 83



Severe Rain Northern NSW March 2017 - Damage Assessments

- Export PDF
- Create PDF
- Edit PDF
- Comment
- Combine Files
- Organize Pages
- Redact
- Protect
- Optimize PDF
- Fill & Sign
- Send for Signature
- Send & Track
- More Tools

# EXCEL SPREADSHEETS

Property\_Damage\_20170411\_PIVOTS.xlsx - Excel

File Home Insert Page Layout Formulas Data Review View Acrobat Tell me what you want to do...

Clipboard Font Alignment Number Styles Cells Editing

Calibri 11 A A

B I U

Wrap Text

General

Normal Bad Good Neutral Calculation

Check Cell Explanatory ... Input Linked Cell Note

AutoSum Fill Sort & Find & Filter Select

Clear

L10

	A	B	C	D	E	F	G	H	I	J	K	L	M	N	O	P	Q	R	S	T	U	V
1																						
2																						
3	Count of initdegdam	Column Labels																				
4	Row Labels	Damage Not stated	Moderate damage	No damage/unaffected	Severe damage	Slight damage	Total damage/destroy	Grand Total														
5	BANORA POINT				13			13														
6	BEXHILL	1	1		58	1	5	66														
7	BILAMBIL	1		3	27		6	37														
8	BILLINUDGEL	98			1			99														
9	BLUE KNOB				1			1														
10	BOAT HARBOUR				4			4														
11	BRAY PARK		17		232	9	8	266														
12	BROADWATER				7			7														
13	BRUNSWICK HEADS	1000						1000														
14	BUNGAWALBIN				1			1														
15	BURRINGBAR	1	11		97	14	6	129														
16	CAWONGLA				3			3														
17	CHILLINGHAM	4	5		40	2	5	56														
18	CHINDERAH	12	19		58			109														
19	CLUNES				1			1														
20	CONDONG	1	43		22	3	43	112														
21	CORAKI	1			209		38	248														
22	CORDALE		1		16			17														
23	CRABBES CREEK	1	1		21	4		27														
24	CRYSTAL CREEK	1			29			30														
25	DOONBAH				7			7														
26	DULGUIGAN	2	7		13	2	3	27														
27	DUNGAY				6		3	9														
28	DUNOON	231			3			234														
29	EAST CORAKI				5			5														
30	EAST LISMORE	1	36		217	10	23	287														
31	ELTHAM				6			6														
32	EUNGELLA	1	1		2		1	5														
33	EVIRON	4	11		1	1	1	18														
34	FINGAL HEAD	5	6		10		40	61														
35	GENEVA	277			2			279														
36	GIRARDS HILL		15		464	28	38	549														
37	GOOLMANGAR		8		5		7	20														
38	GOONELLABAH	1						1														
39	HOPKINS CREEK				49			49														
40	HOWARDS GRASS				6			6														
41	KEERRONG	1			28			29														
42	KILGIN				1			1														
43	KINGSCLIFF				2			2														
44	KUNGHUR				1			1														
45	KYNNILIMBOON	2	7		4	3	2	18														

Sheet1 Property\_Damage\_20170411\_PIVOTS Sheet2

Ready

# GIS DATA

ArcCatalog - Q:\Projects\EVENTS\IA\_20170401\_Severe\_Weather\_NE\_NSW\GDB\Current model

File Edit View Go Geoprocessing Customize Windows Help

Q:\Projects\EVENTS\IA\_20170401\_Severe\_Weather\_NE\_NSW\GDB\Current model

Catalog Tree

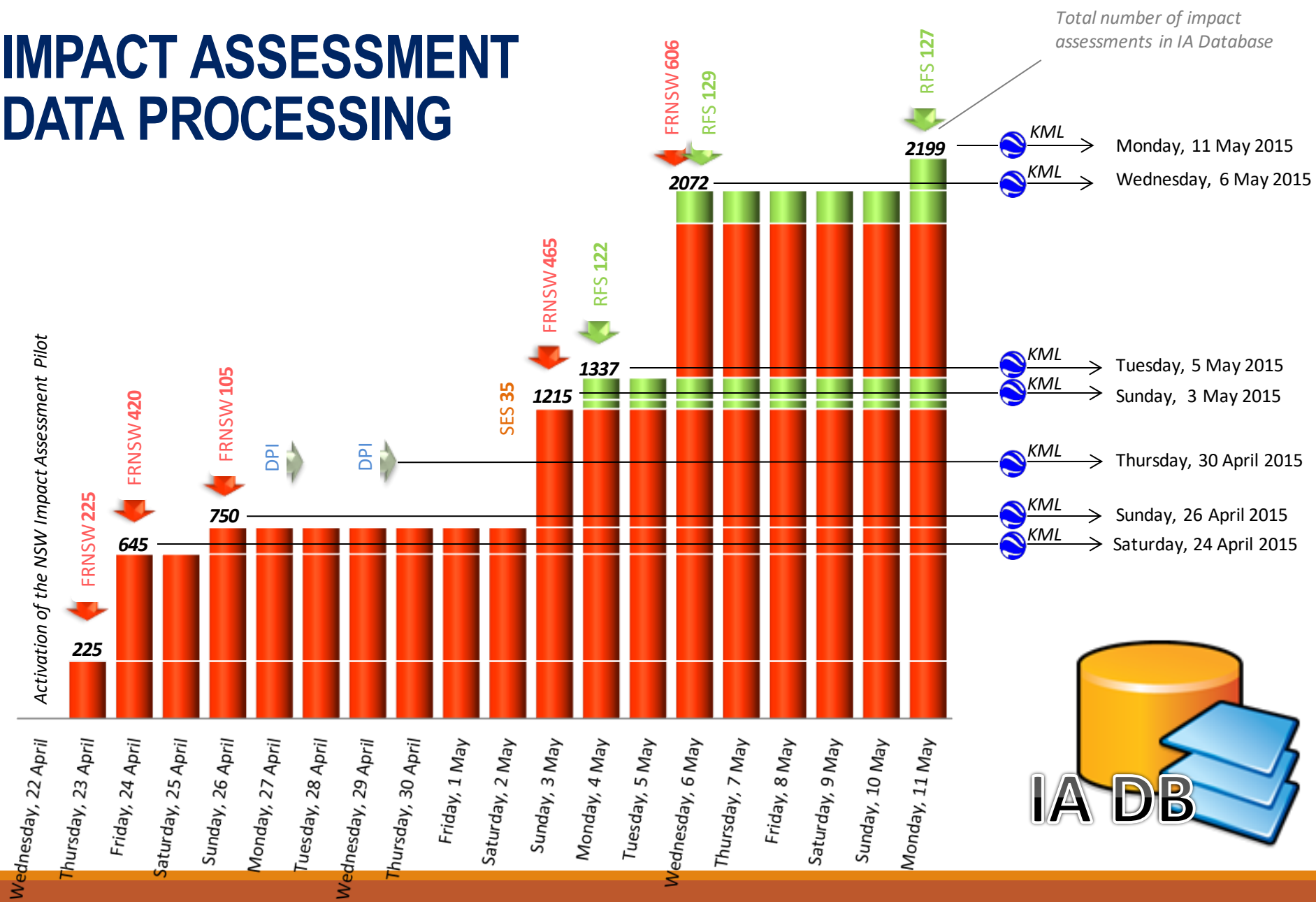
- ASEAN Conference 2018
- Australia Day
- Botany\_Hazmat\_20110913
- Canberra\_Bushfire\_20170118
- CeBit
- City to Surf
- COMMON\_INFO
- Contacts
- CopyMe
- CopyMe ArcGIS10
- CopyMe ArcGIS10\_2016
- CopyMe\_ImpactAssessment
- Crowd Congregation Areas
- Cyclone Debbie
- Cyclone\_Marcia\_FEB2015
- Data
- Dept Premier and Cabinet Events Group
- Equine Flu
- Events Data Shared
- F3\_Investigation
- FFN
- FME
- Hawkesbury Nepean Valley Damages Assessm
- HMAS Adelaide
- IA\_20131101\_Bushfires\_BlueMountains
- IA\_20150423\_Severe\_Weather\_NSW
- IA\_20151216\_Severe\_Weather\_Sydney
- IA\_20160106\_Severe\_Weather\_Eastern\_NSW
- IA\_20160114\_Severe\_Weather\_Sydney
- IA\_20160604\_Severe\_Weather\_NSW
- IA\_20160925\_Severe\_Weather\_NSW
- IA\_20161106\_Bushfires\_NSW
- IA\_20161207\_ImpactAssessment\_Exercise
- IA\_20170214\_Bushfires\_NSW
- IA\_20170401\_Severe\_Weather\_NE\_NSW
  - Agency\_Data\_Received
  - Archive\_FTP
  - Delivery\_Event
  - Documentation
  - Excel
  - FME
  - GDB
    - Current model
      - Shapefiles
      - IADataDictionary.gdb
      - IADataDictionary\_20170403\_Combir
      - IADataDictionary\_20170404.gdb
      - IADataDictionary\_20170405.gdb
      - IADataDictionary\_20170406.gdb
      - IADataDictionary\_20170407.gdb
      - IADataDictionary\_20170409.gdb
      - IADataDictionary\_20170410.gdb
      - IADataDictionary\_20170411.gdb
      - IADataDictionary\_Template.gdb
      - Property\_w\_Address.gdb
      - IA\_SCHEMA.xml
      - ImpactAssessmentDataDictionary.x

Contents Preview Description

Name	Type
Shapefiles	Folder
IADataDictionary.gdb	File Geodatabase
IADataDictionary_20170403_Combined.gdb	File Geodatabase
IADataDictionary_20170404.gdb	File Geodatabase
IADataDictionary_20170405.gdb	File Geodatabase
IADataDictionary_20170406.gdb	File Geodatabase
IADataDictionary_20170407.gdb	File Geodatabase
IADataDictionary_20170409.gdb	File Geodatabase
IADataDictionary_20170410.gdb	File Geodatabase
IADataDictionary_20170411.gdb	File Geodatabase
IADataDictionary_Template.gdb	File Geodatabase
Property_w_Address.gdb	File Geodatabase
IA_SCHEMA.xml	XML Document
ImpactAssessmentDataDictionary.xml	XML Document

Folder selected

# IMPACT ASSESSMENT DATA PROCESSING



# QUESTIONS

