

Net Zero Land

Office of Energy and Climate Change
September 2023

Mark Caddey

The Office of Energy and Climate Change is part of the **Treasury Cluster**.



Acknowledgement of Country

We acknowledge that Aboriginal and Torres Strait Islander peoples are the First Peoples and Traditional Custodians of Australia, and the oldest continuing culture in human history.

We pay respect to Elders past and present and commit to respecting the lands we walk on, and the communities we walk with.

We celebrate the deep and enduring connection of Aboriginal and Torres Strait Islander peoples to Country and acknowledge their continuing custodianship of the land, seas and sky.

We acknowledge the ongoing stewardship of Aboriginal and Torres Strait Islander peoples, and the important contribution they make to our communities and economies.

We reflect on the continuing impact of government policies and practices, and recognise our responsibility to work together with and for Aboriginal and Torres Strait Islander peoples, families and communities, towards improved economic, social and cultural outcomes.

Artwork:
Regeneration by Josie Rose





YARRAGA

- wattle flowering

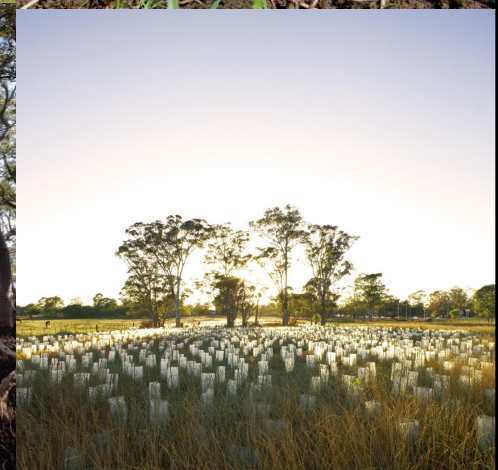
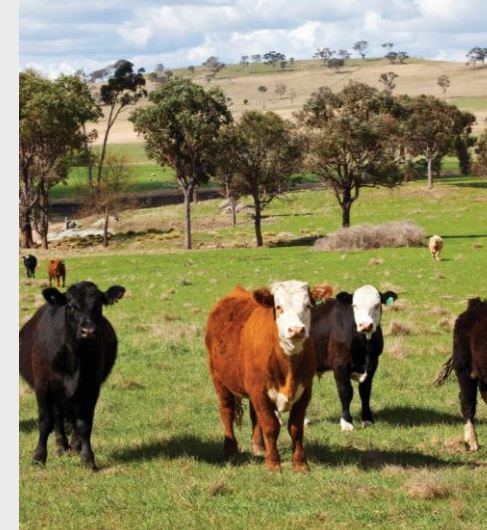
1

Purpose and overview

Program Purpose

The Net Zero Land program:

- Supports the NSW Net Zero 2030 and 2050 Targets
- Aims to scale up carbon abatement in the primary industries and land management sectors (agricultural, Aboriginal, public lands, blue carbon)
- With a vision to transform the primary industries and land sector to unlock carbon abatement and nature-positive action into the future.



2

Supporting Land Mangers

Agriculture, Aboriginal Lands, Public Lands

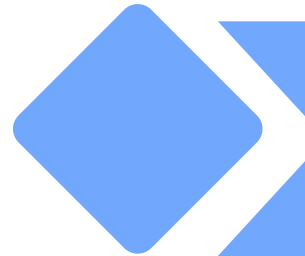
Direct investment in abatement projects

Outcome:

The commercial viability of carbon abatement projects is improved and demonstrated.

Objectives:

- Pilot new practices or approaches with potential to scale
- Increase the number and diversity of projects, including at regional level
- Develop a stronger evidence base.



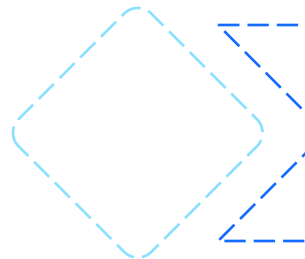
HIGH IMPACT PARTNERSHIPS

EOI process targeting leading organisations with ability to scale impact. Co-designed with government.



COMPETITIVE FUND

Competitive grants removing barriers to action.
Focus on on-ground abatement.



SUBSIDIES

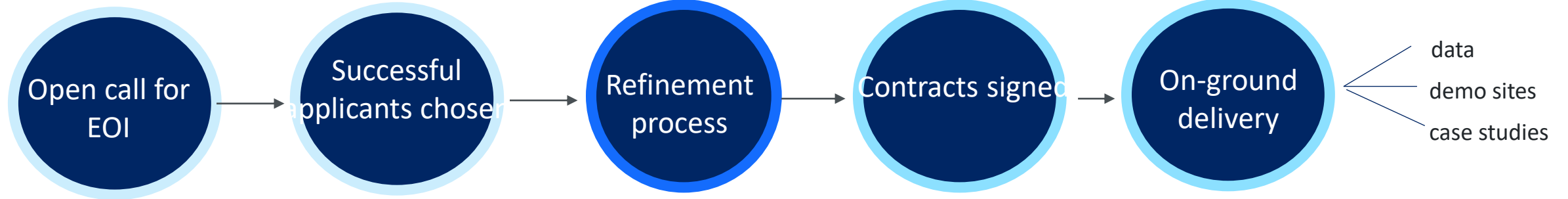
Potential to design subsidies where an abatement opportunity has a clear cost barrier suited to standardised offering.



High impact partnerships

Expected investment \$0.5M-\$2M per partnership

Ability to layer in additional
partners



A light blue graphic consisting of a diamond shape on the left and a horizontal arrow pointing to the right.

Competitive grants

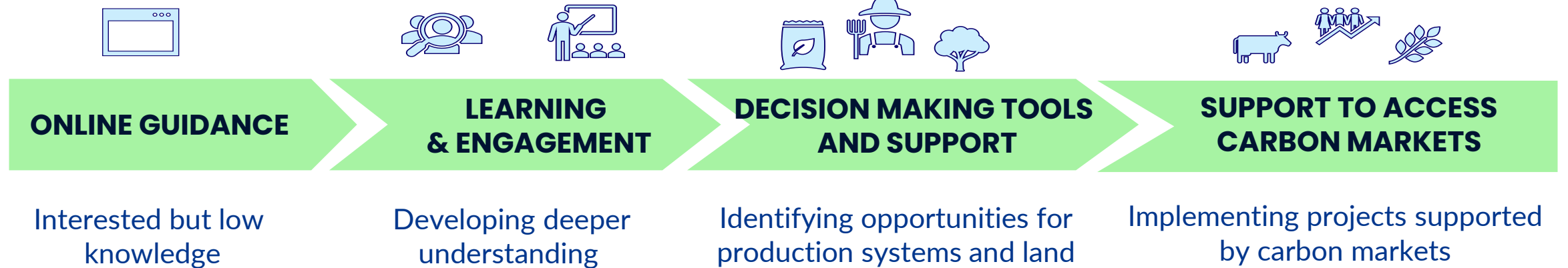
- Competitive grants will target barriers to the uptake of abatement projects or alignment with other government priorities
- Single project or small aggregation.
- Review of investment focus to be undertaken following each round.



Build capacity

Land managers are able to make informed decisions about carbon management, and have access to trusted advice.

Objective is to build awareness, capacity and expertise around carbon management, grow abatement opportunities and improve decision support systems.



Carbon on Country

An initiative of the Primary Industries Productivity & Abatement Program



Facilitates knowledge sharing and access to carbon markets for Aboriginal landholders and organisations.

Seeks to ensure that carbon projects align with aspirations for Country and are carried out with Free, Prior and Informed Consent (FPIC) of all parties and Indigenous Cultural and Intellectual Property (ICIP) rights are recognised and upheld.

Resources are available to support Aboriginal landholders considering carbon projects and the potential cultural, environmental, social and economic benefits they can bring.

The initiative can support project development and implementation on Country.

Please contact the team: netzero.land@environment.nsw.gov.au



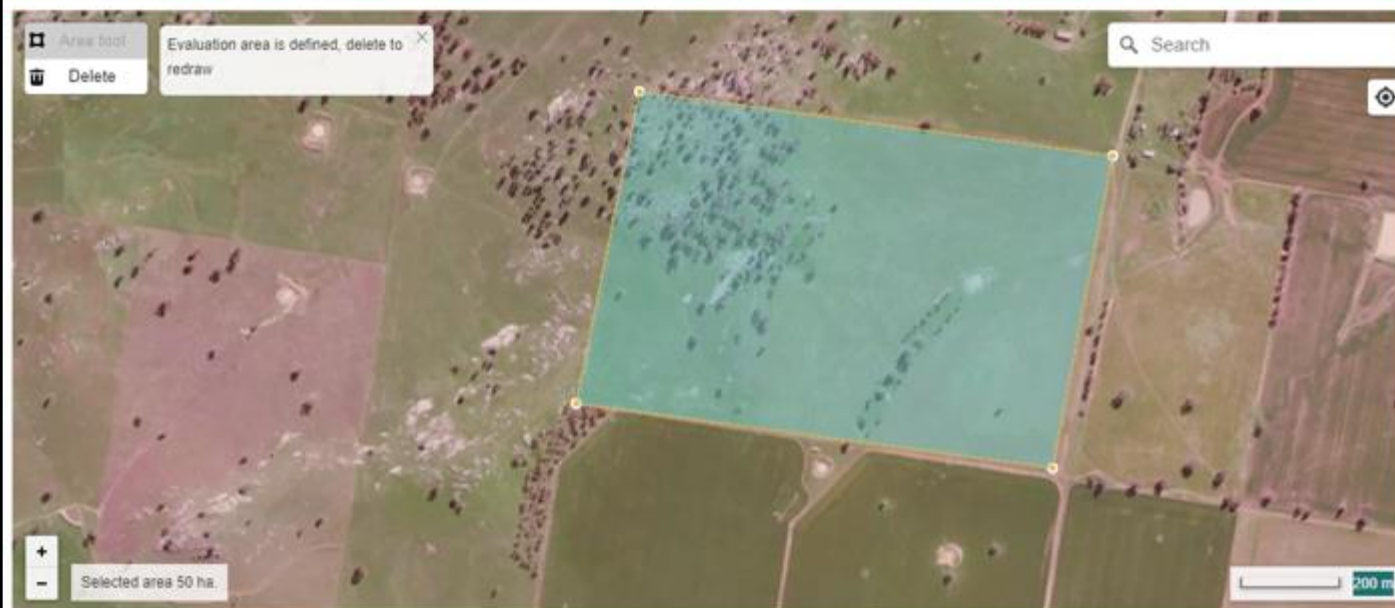
Agricultural Leadership in Sustainable Thinking (A-LiST)



Leaders from the Agricultural production, supply chain and retail sectors

- Provide a channel for government to listen to the sector and adapt delivery to market needs.
- Ratchet up ambition by highlighting leadership and fostering partnerships.

Understanding abatement potential



Reforestation by environmental or mallee plantings

Vegetation method

Benefit type

Rating

Farm co-benefits



25 year estimate over the whole project area (tCO₂-e):

10,290

Annual per ha estimate (tCO₂-e/ha/y):

8.3

Areas to exclude (Optional)

Does the proposed area include any of the following areas? Select all that apply.

- | | |
|--|--|
| <input checked="" type="checkbox"/> Forest | <input type="checkbox"/> Native forest that has been cleared in the past 5 years |
| <input type="checkbox"/> Wetlands | <input type="checkbox"/> Wetlands that have been drained in the past 5 years |
| <input type="checkbox"/> Roads | <input type="checkbox"/> Settlements |
| <input type="checkbox"/> Other (e.g. land otherwise unable to support plant cover) | |

What percentage of the total land area selected do the excluded areas occupy?

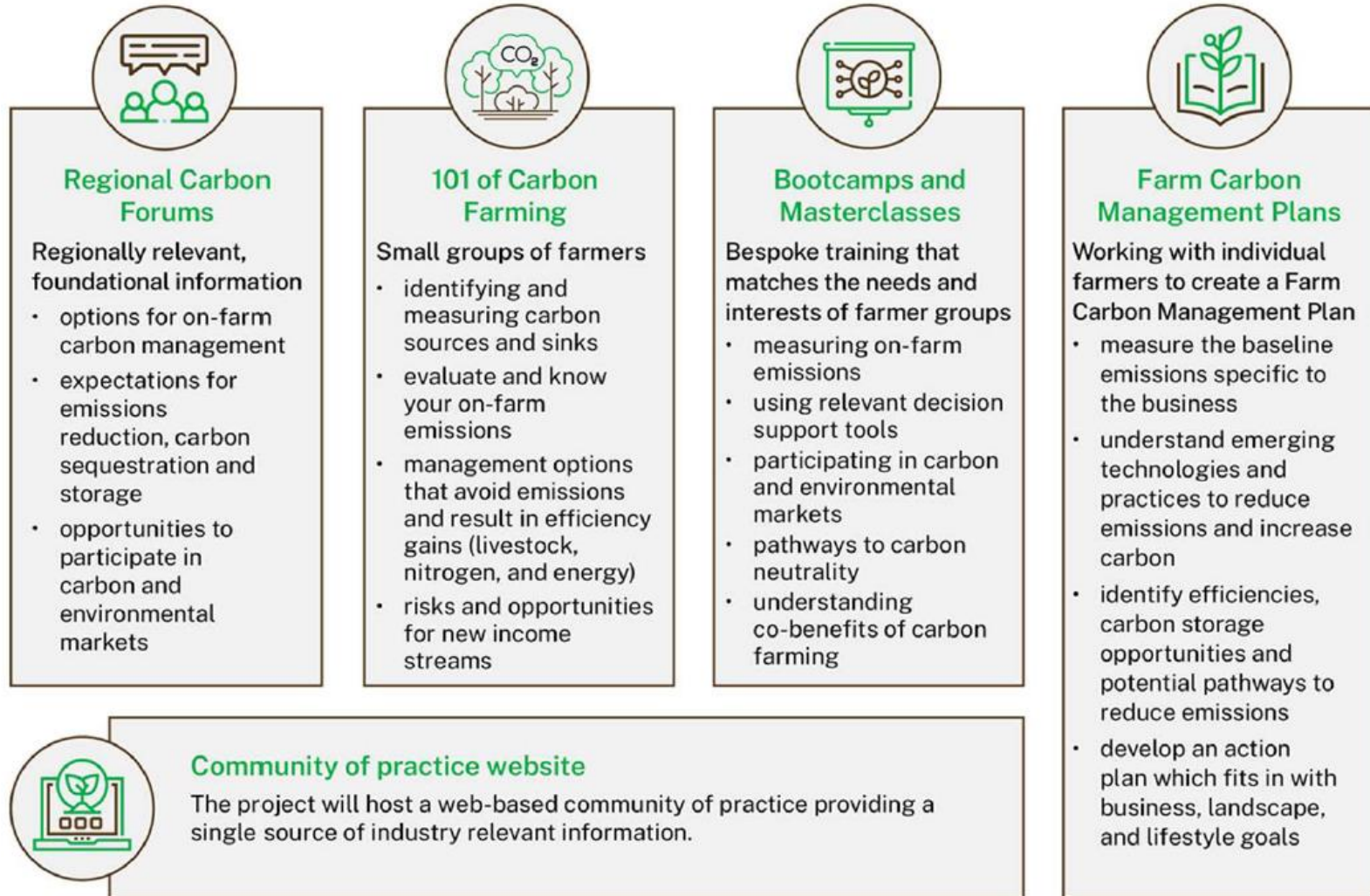
25

Visit <https://looc-c.farm/> to estimate abatement

3

Partnerships

On-Farm Carbon Advice Program (DPI)



Investing in partnerships

Carbon projects with National Parks and Dept of Primary Industries

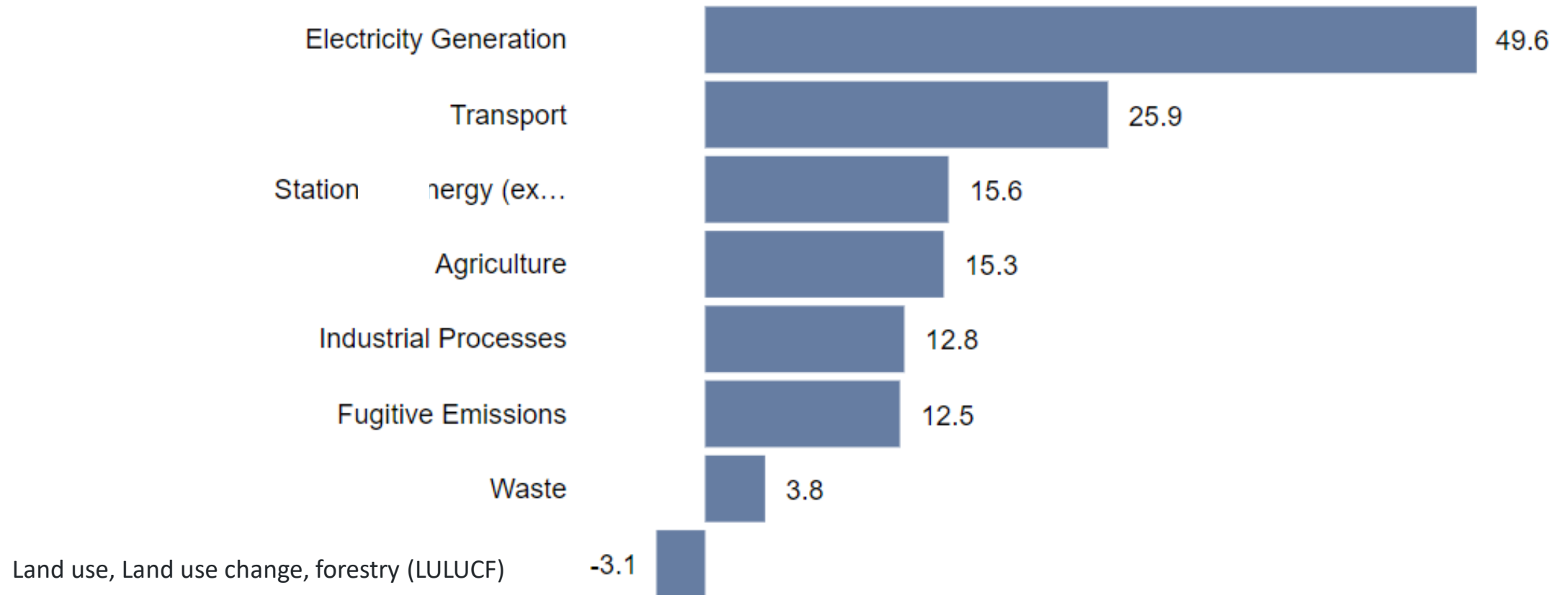


4

Carbon 101

NSW's emissions source by sector

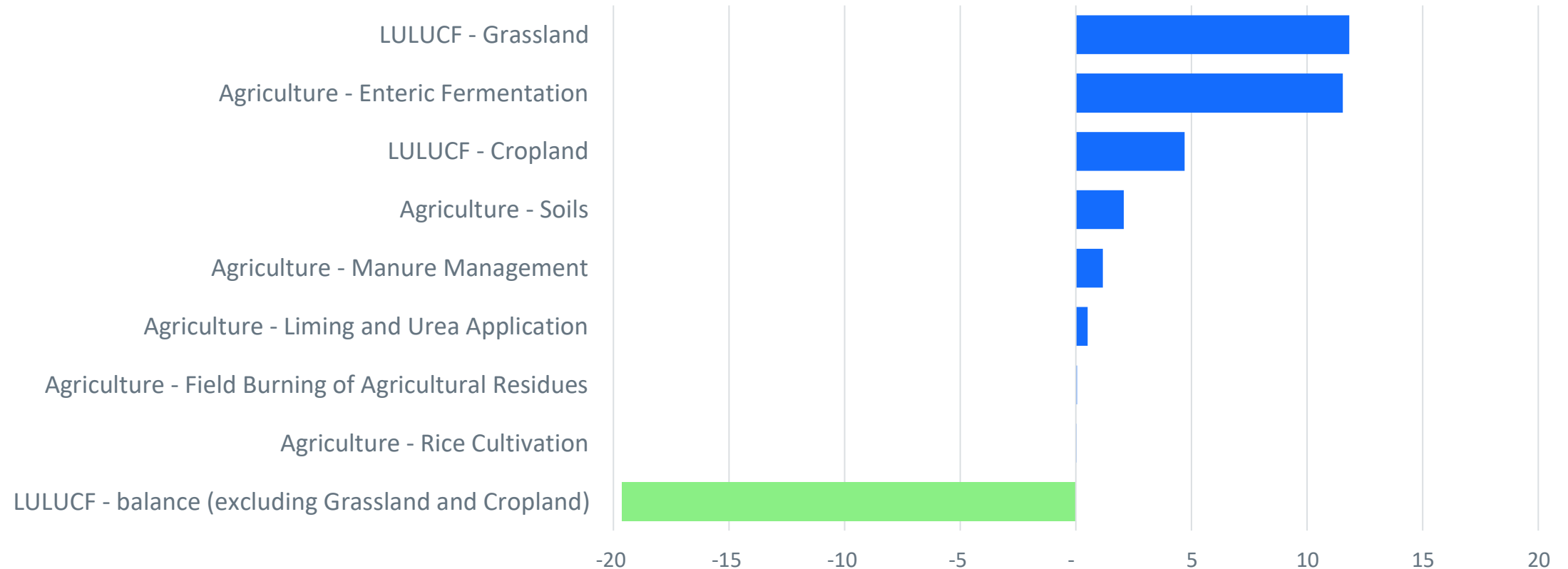
Emissions by sector or subsector in 2020 (Mt CO₂-e)



NSW - Emissions and sequestration in the land sector



2020 - Agriculture and LULUCF emissions and sequestration (Mt CO₂-e)

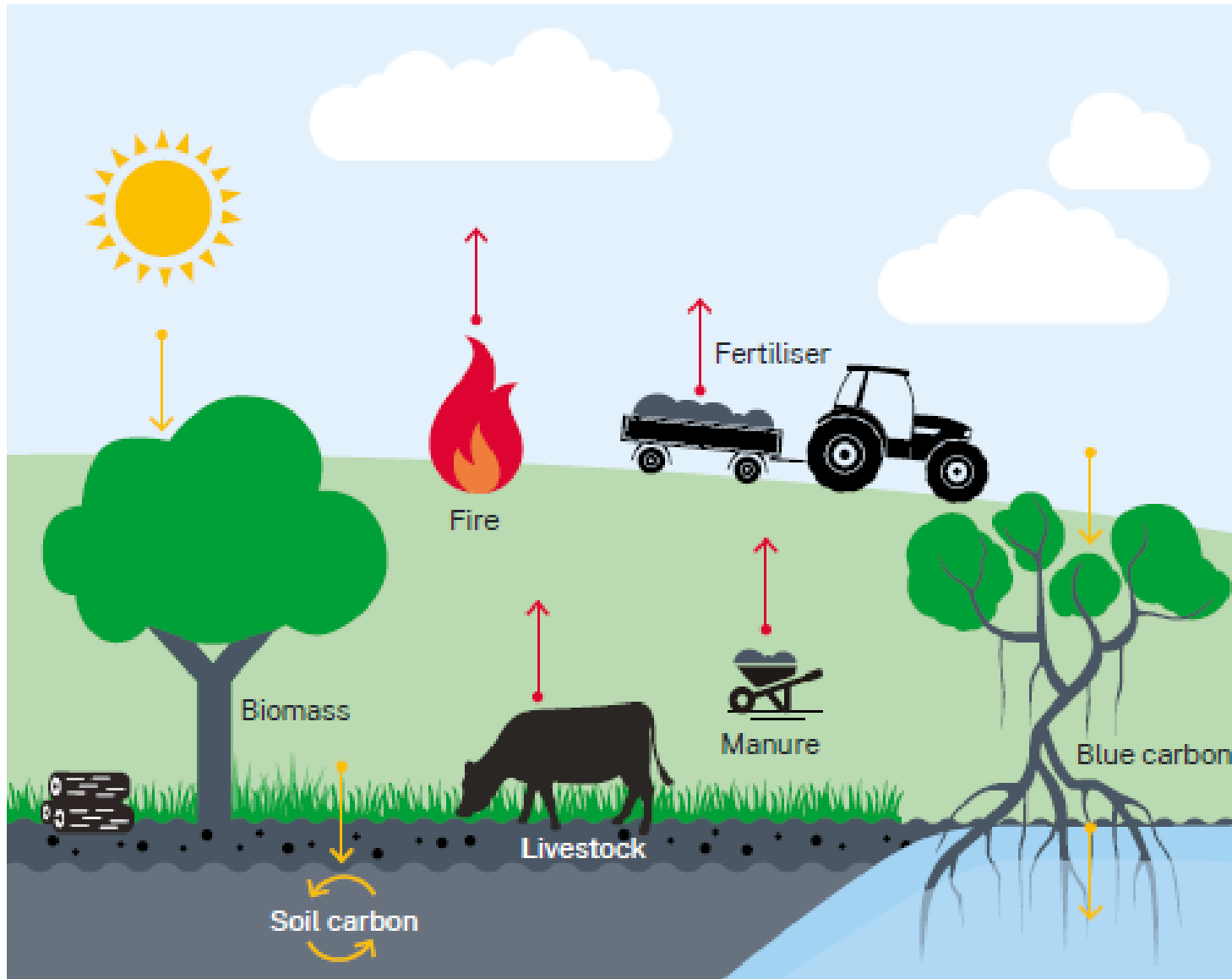


Sources and Sinks

Carbon absorbed or released to atmosphere.

3 greenhouse gases:

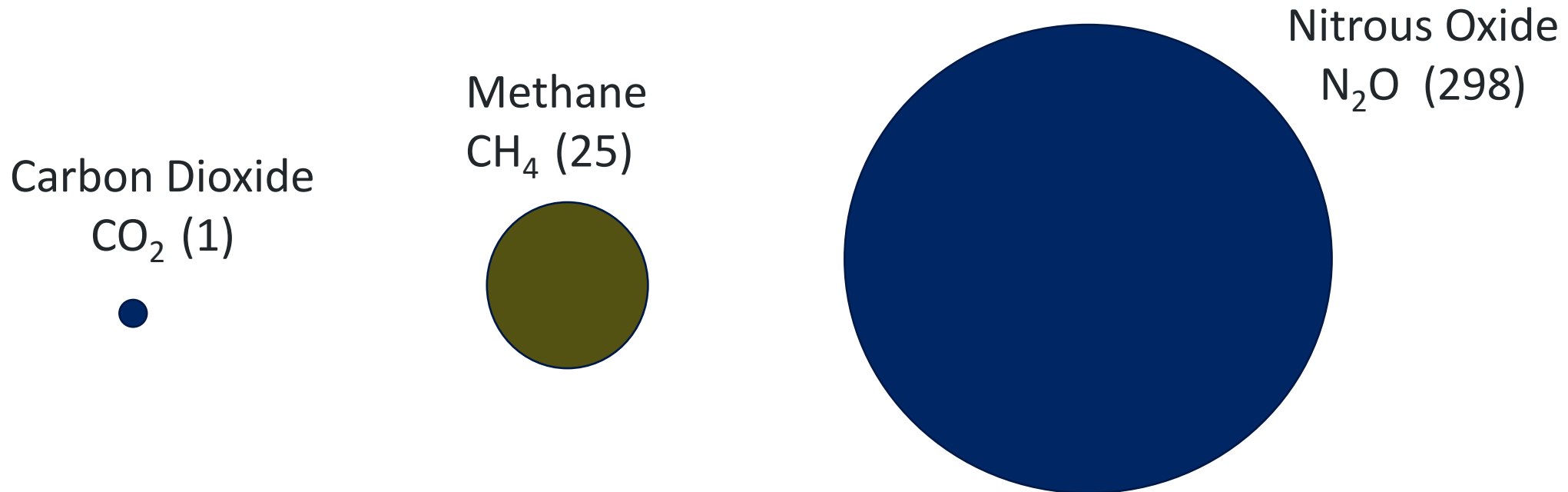
- Carbon Dioxide (CO_2)
- Methane (CH_4)
- Nitrous Oxide (N_2O)



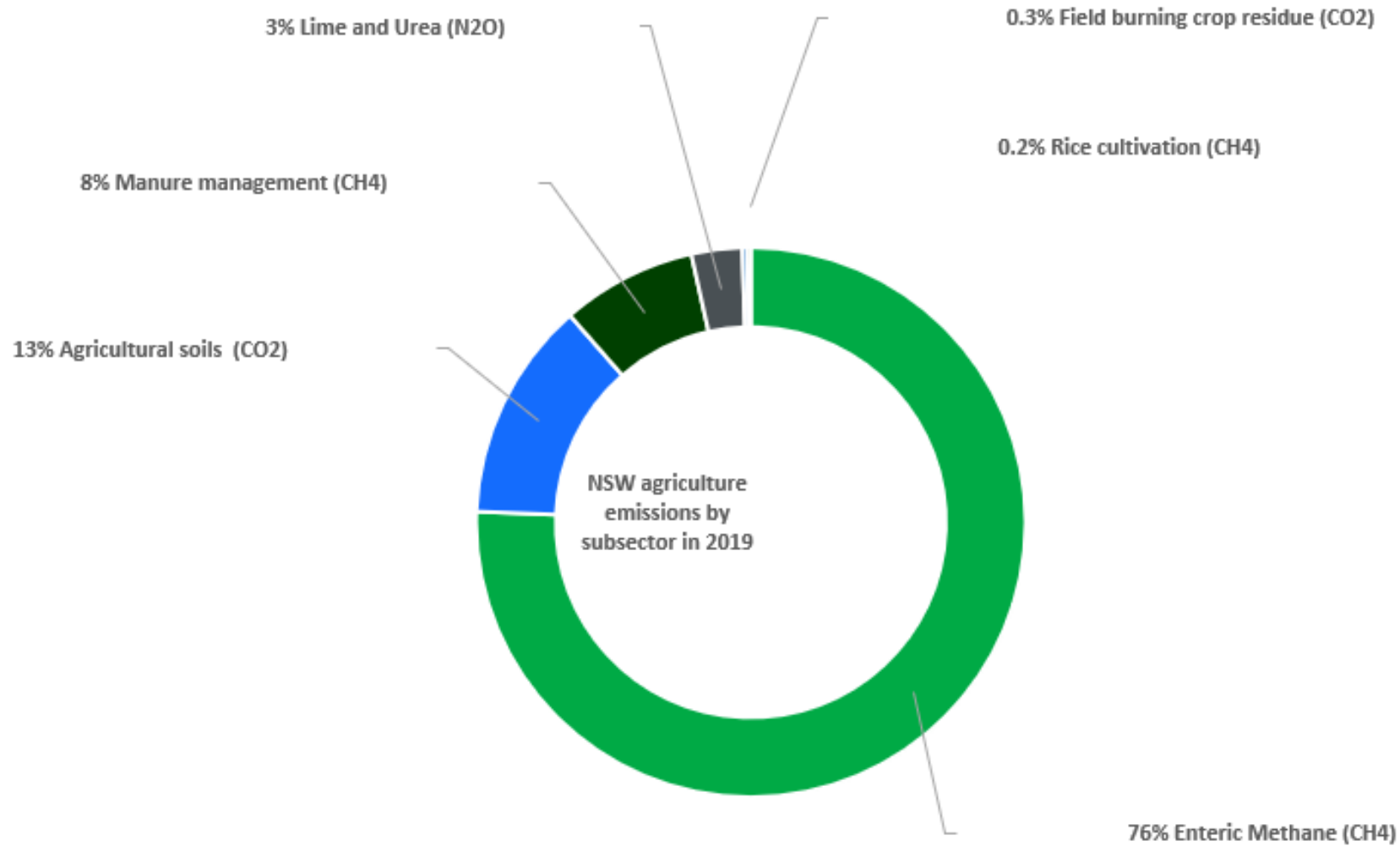
Agriculture in NSW emits 15.3 Million tCO₂-e a year

but why tCO₂-e? (metric tons of carbon dioxide equivalent)

*not all greenhouse gasses have the same thermal properties
for comparisons a base unit of carbon dioxide (1) is used.*



*'...one tonne of methane will cause the same amount of global warming as 25 tonnes of carbon dioxide,
one tonne of nitrous oxide is equivalent to 298 tonnes of carbon dioxide...'*



Contact:
netzero.land@environment.nsw.gov.au

