

Mapping Census data

***Mapped Out conference
17 October 2013***



***David Baker and Simon Best
Australian Bureau of Statistics***



Census
For a brighter future

Census overview

Census Overview

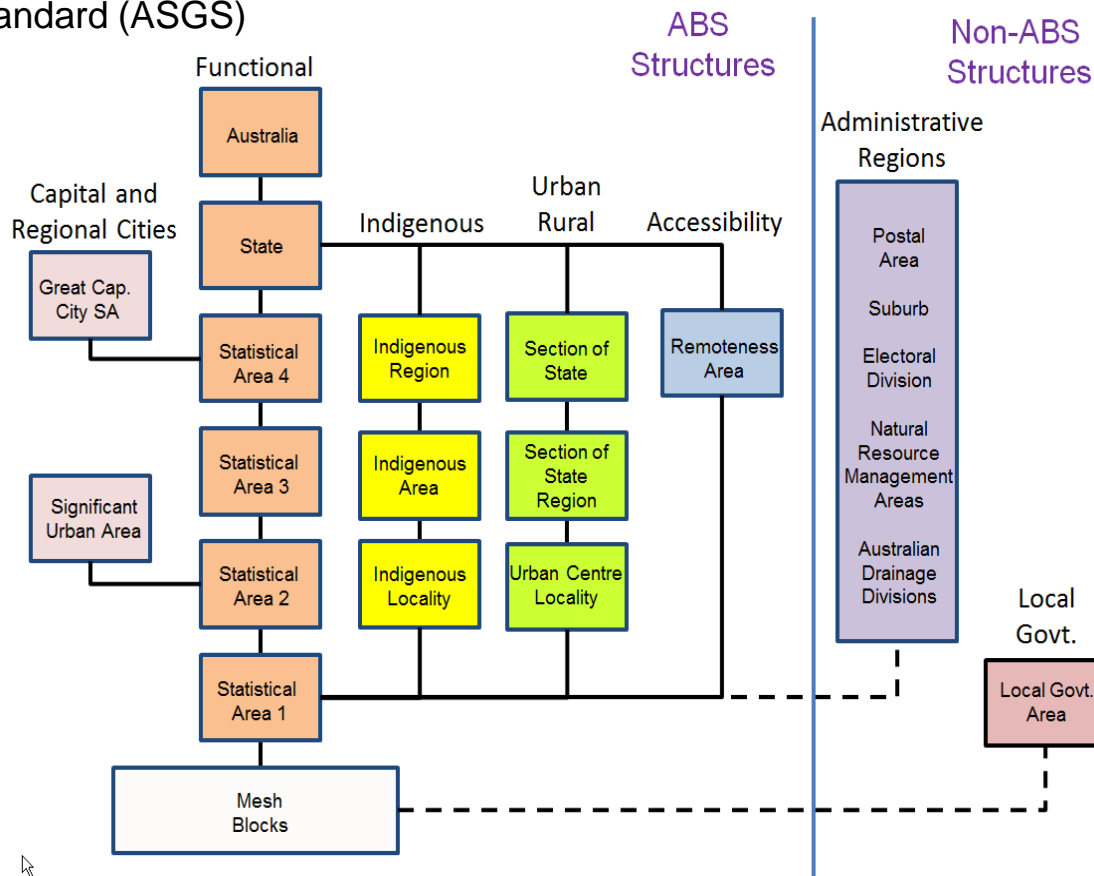
Census **For a brighter future**

The Census provides a snapshot of Australia's people and their housing – information is used to determine services and facilities you and your community need



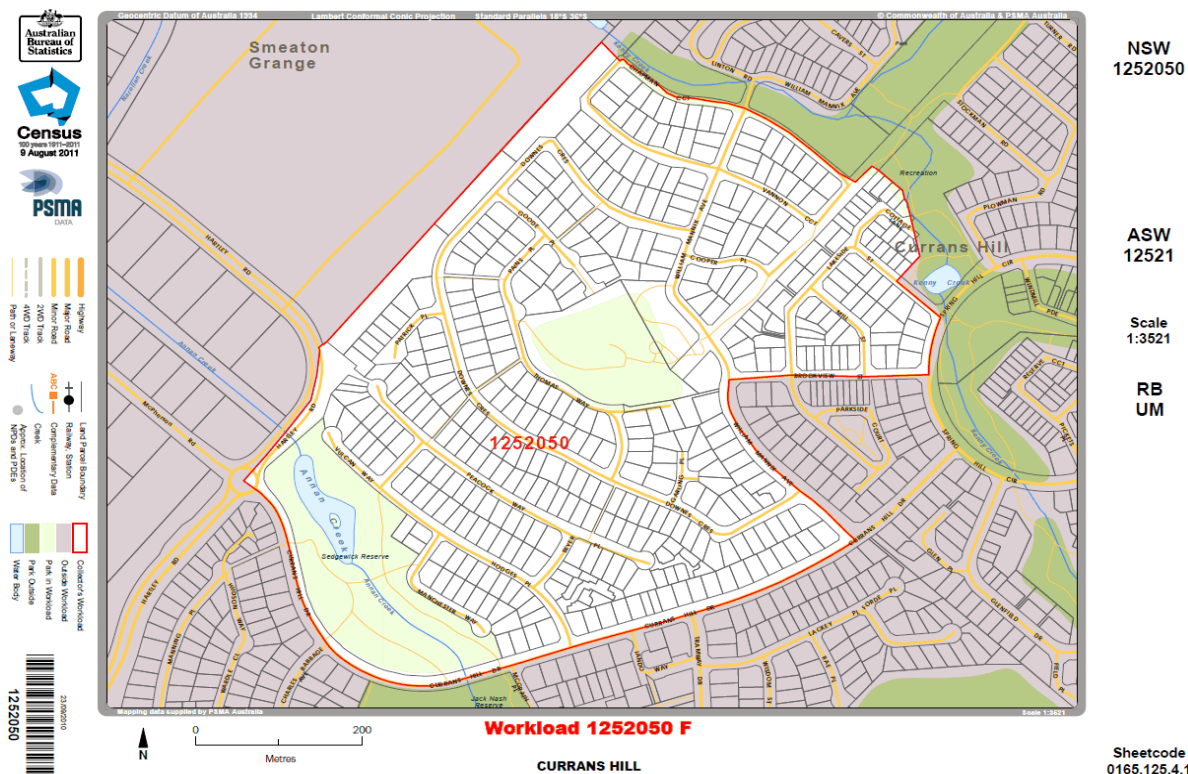
Design of Statistical Areas for Output

Australian Statistical Geography
Standard (ASGS)





305 in the Riverina



Address Geocoding



2011 products:

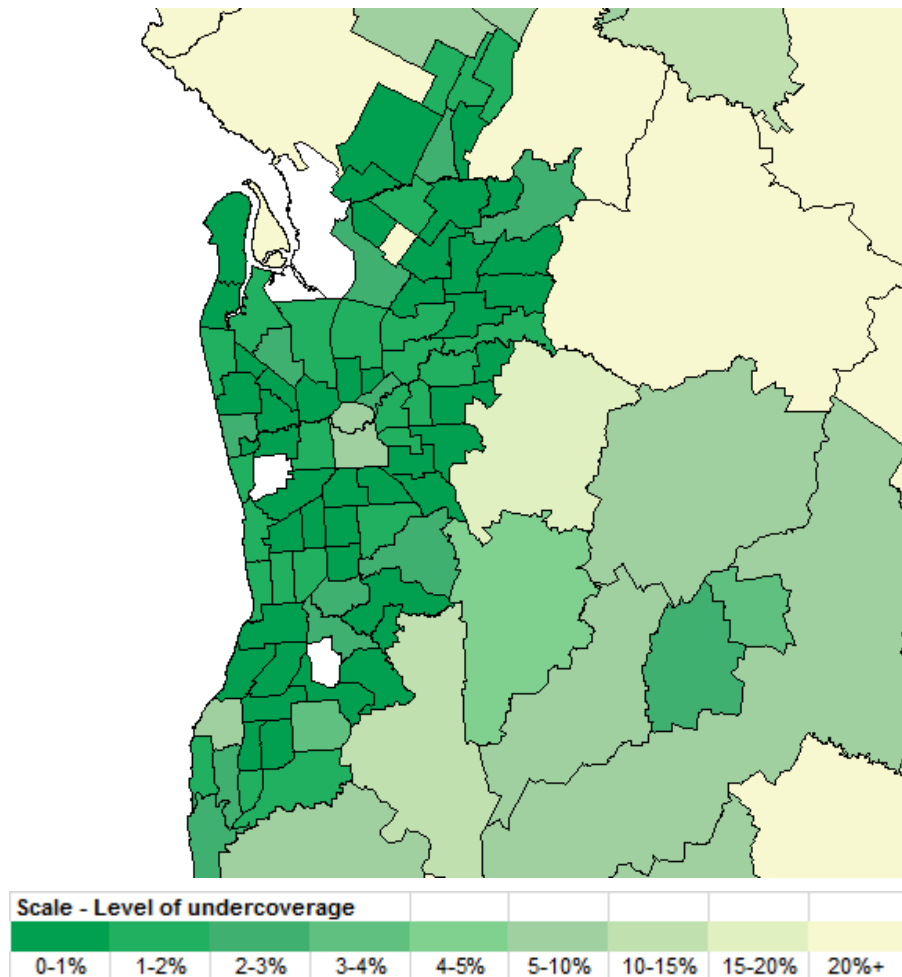
- TableBuilder
- Quickstats
- Datapacks
- Community Profiles
- SEIFA



2016 – Mail-out Census



Undercoverage of GNAF – Adelaide Region



2016 - Mobile GIS?





Census
For a brighter future

2011 Census

2011 Census data

Available through a range of products

2011 products:



QuickStats -- free



Community Profiles -- free



DataPacks -- free (download) or paid (DVD)



TableBuilder 2011

TableBuilder Basic -- free

TableBuilder Pro -- paid



Intuitive navigation: Census homepage

[Home](#)
[First Visit?](#)
[Statistics](#)
[Services](#)
[Census](#)
[Topics @ a Glance](#)
[Methods & Classifications](#)
[News & Media](#)
[Education](#)
[Links](#)
[Help](#)

[ABS Home](#)

Census home

+ About the Census

- Data & analysis

Analytical articles

QuickStats

Community Profiles

TableBuilder

DataPacks

SEIFA

Census Sample Files

5% SLCD

Mesh Block Counts

Customised Data Services

Historical data

Registration centre

- Reference & information

2011 reference & information

Historical reference & information

- Data quality

Quality declaration

Investigations

Statements

Non-response rates

Fact sheets

+ Help & feedback

+ News & media

Census

For a brighter future

The Census provides a snapshot of Australia's people and their housing – information is used to determine services and facilities you and your community need

Census data

QuickStatsSearch

Enter a location






more Census data

Newsboard

How do you use Census data?

3 May 2013

Are you a Census data user? Is Census data essential to your work or studies? Do you use Census data at home? We would like to invite you to complete a survey regarding your usage of the 2011 Census data.

view newsboard

2006 Spotlight



Find out what the Australian Census can tell you about you.

2016 Census

The next Census of Population and Housing is scheduled for August 2016 and planning is well underway. The ABS has begun a consultation process with Census data users and the general public.

2016 Census information

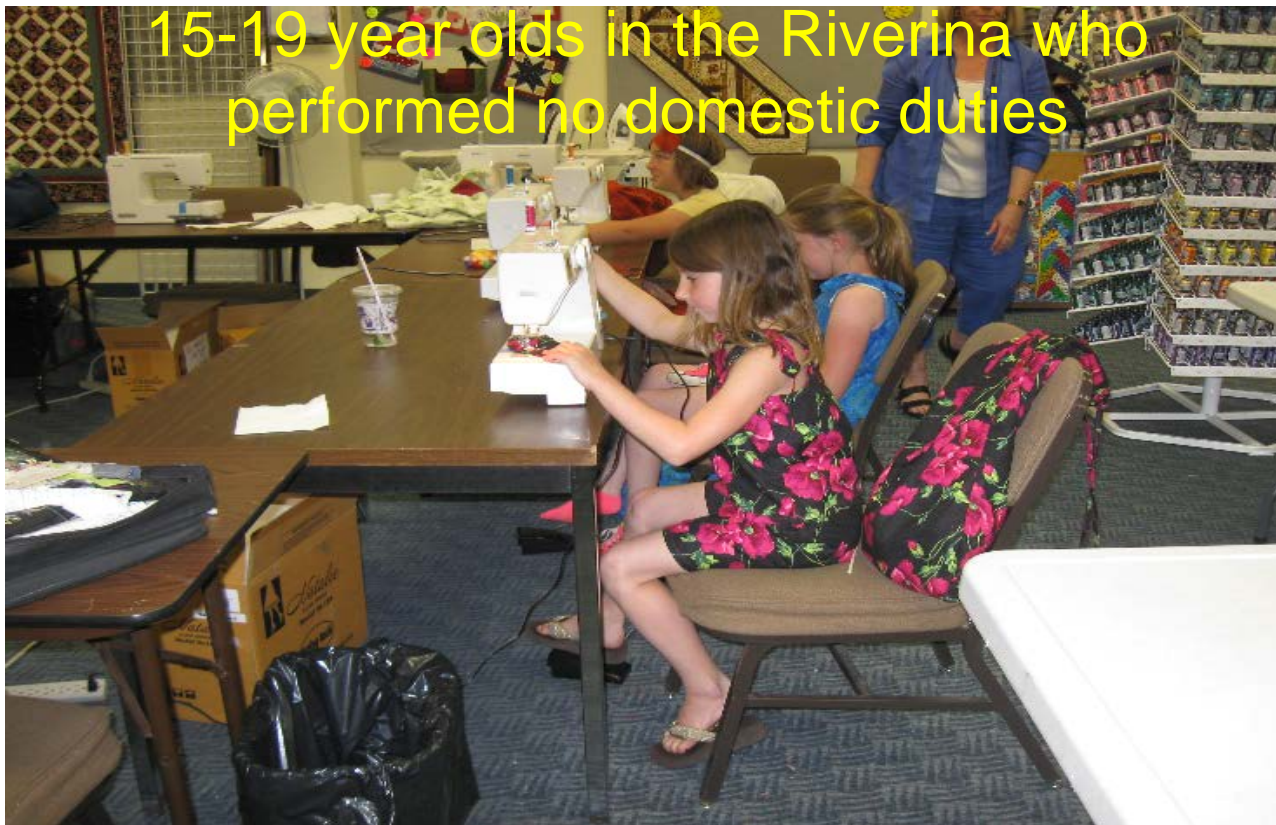
This page last updated 3 May 2013






Return to Top

15-19 year olds in the Riverina who performed no domestic duties



Males – 40.7%

Females – 27.5%

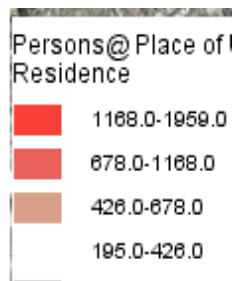
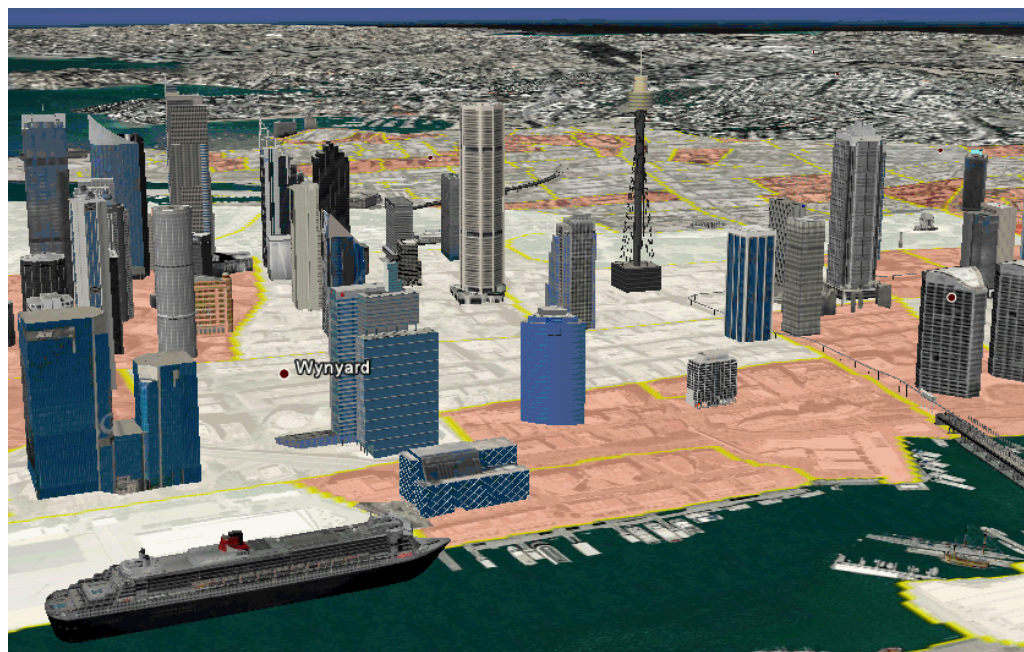
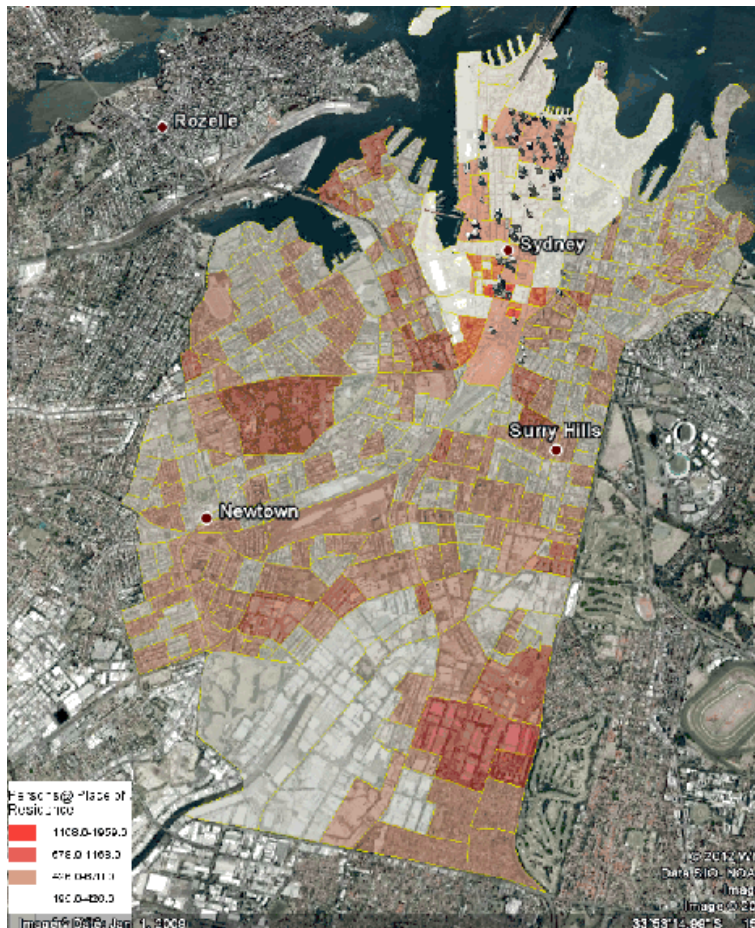
DataPacks

- Data designed for import into databases or analysis systems – e.g. Mapinfo, ArcGIS
- Include digital boundary files, metadata and reference documents
- Do not include software

TableBuilder

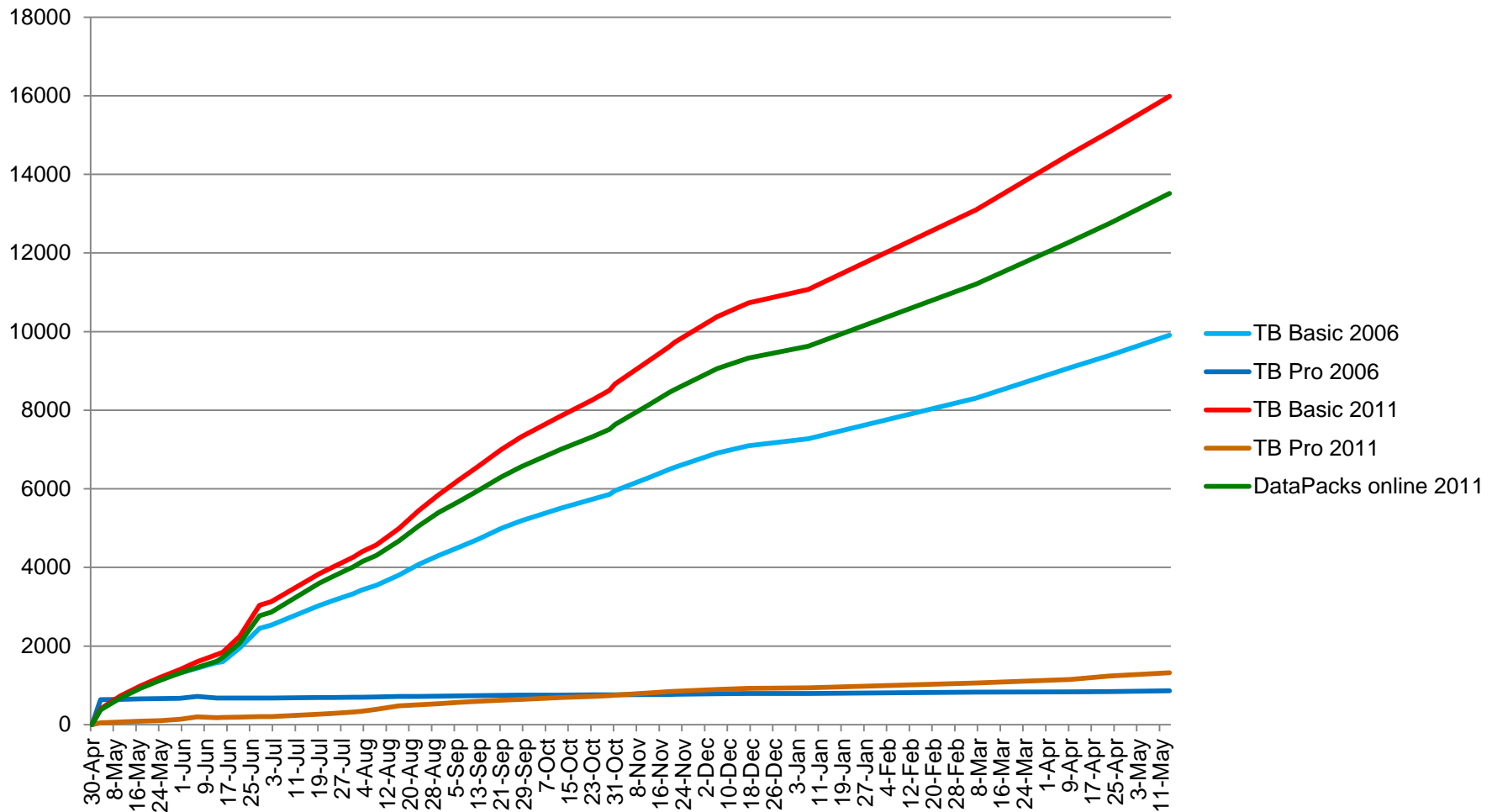
- Great tool for building customised tables
- Data can be presented in thematic maps and graphs
- Basic: predefined tables
- Pro: databases at various levels with ability to cross-classify items

TableBuilder 2011: Improved data visualisation

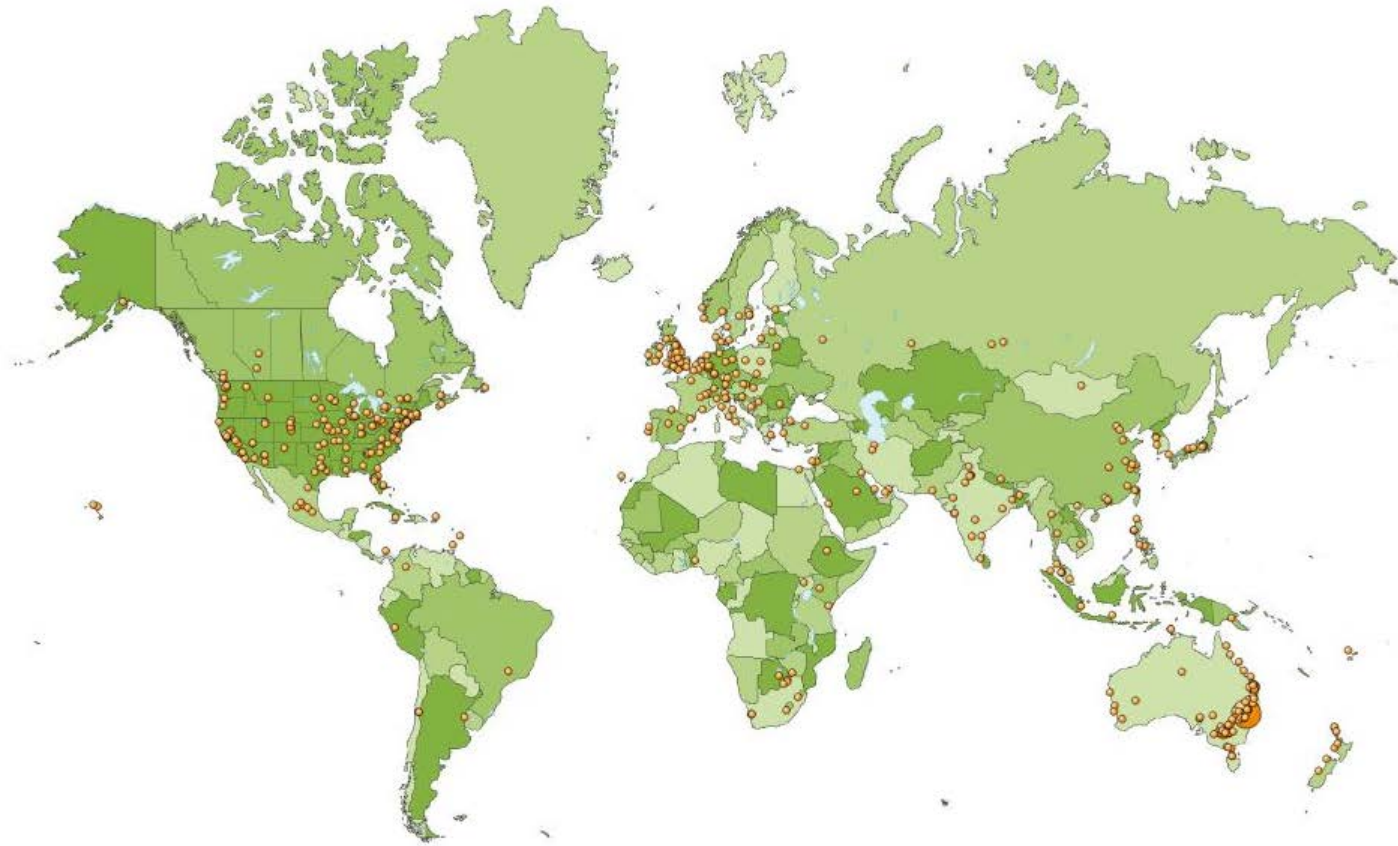


Example of a kmz file, opened in Google Earth, showing an overlay of population for Haymarket

Registered users:



Where the users are located:



2011 products:



Socio-Economic Indexes for Areas (SEIFA) -- free



Census Analytical Papers -- free



Customised Data Service -- paid



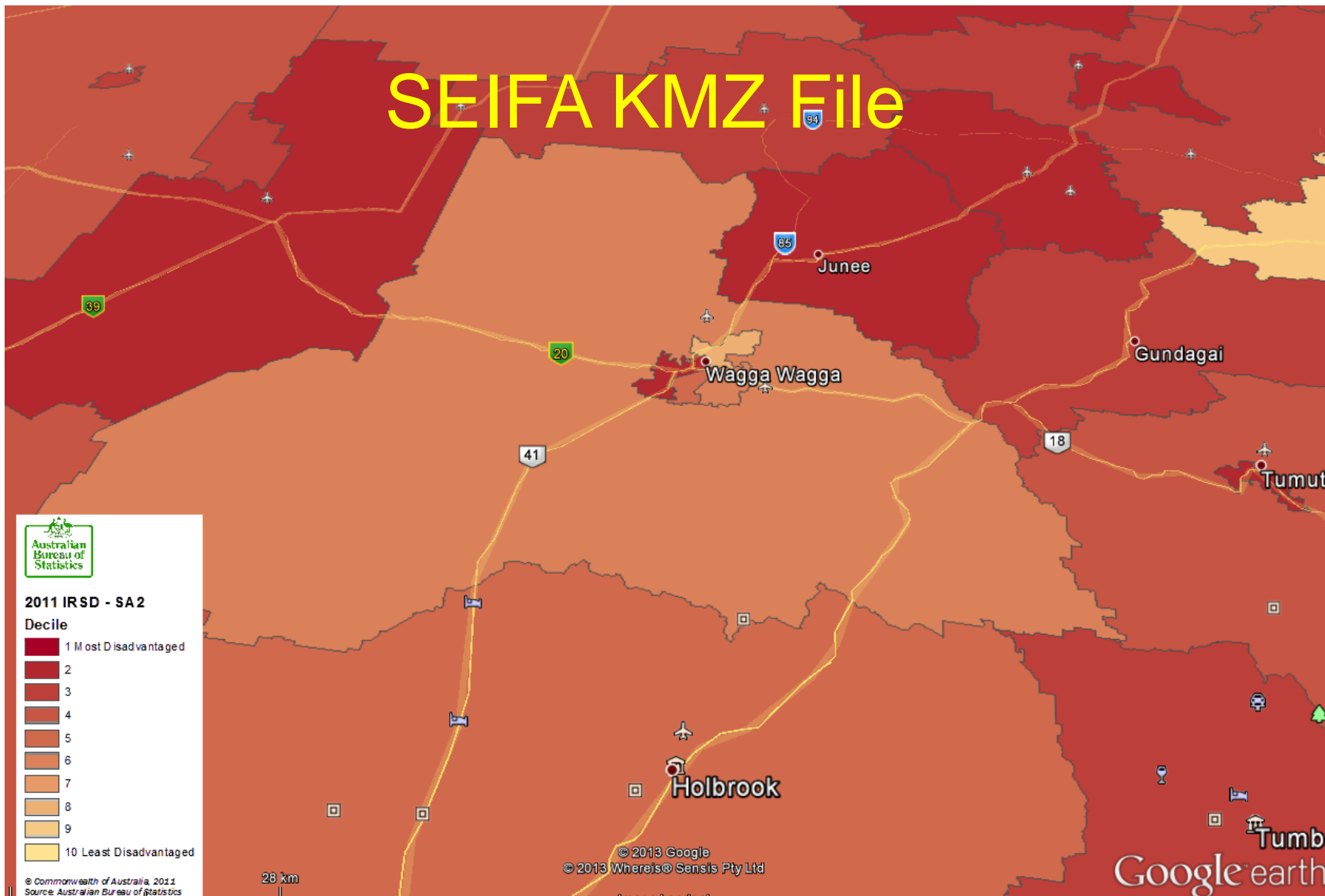
Census Sample Files (1% and 5%) -- paid



5% Statistical Longitudinal Census Dataset (SLCD) -- paid



SEIFA KMZ File





- David Baker – david.baker@abs.gov.au
- Simon Best – simon.best@abs.gov.au



QuickStats 2011: summary data view

2011 Census QuickStats All people - usual residents



Australia | New South Wales | Statistical Area Level 3
Wagga Wagga
Code 11303 (SA3)



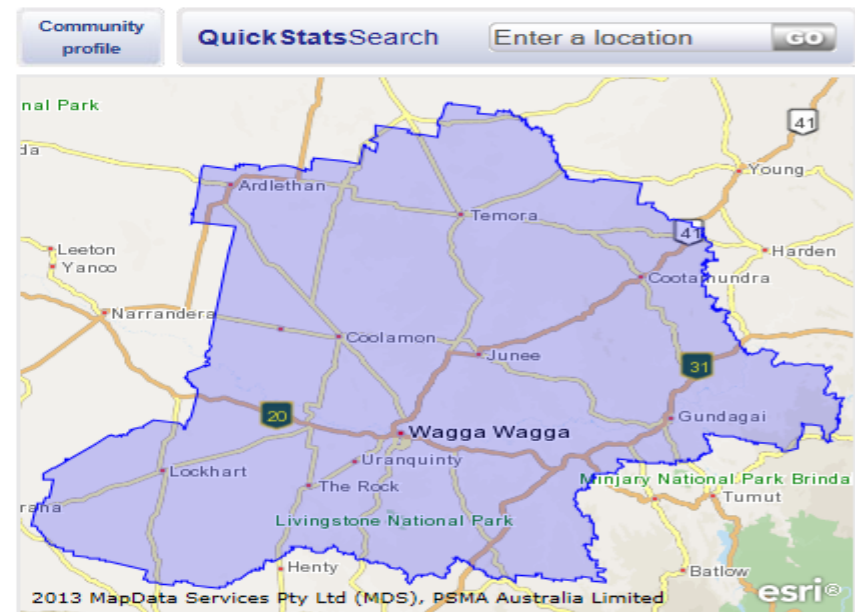
People
Male 89,194
Female 44,144
Median age 45,050
37



Families
Average children per family 23,246
2




All private dwellings
Average people per household 38,080
2.5
Median weekly household income \$1,022
Median monthly mortgage repayments \$1,430
Median weekly rent \$200
Average motor vehicles per dwelling 1.8



- People** includes demographics & education | cultural & language diversity | employment >
- Families** includes family composition | weekly incomes | employment status of couple families >
- Dwellings** includes dwelling structure | household composition | mortgage & rent | number of motor vehicles >
- Aboriginal and Torres Strait Islander people** includes selected people & dwelling characteristics >

TableBuilder 2011: Homepage



For a brighter future

[Home](#)
[First Visit?](#)
[Statistics](#)
[Services](#)
[Census](#)
[Topics @ a Glance](#)
[Methods & Standards](#)
[News & Media](#)
[Education](#)
[Links](#)
[Help](#)

[BS Home](#)

[Census home](#)

[About the Census](#)

[Data & analysis](#)

[Analytical articles](#)

[QuickStats](#)

[Community Profiles](#)

[TableBuilder](#)

[DataPacks](#)

[EIFA](#)

[Customised Data Services](#)

[Historical data](#)

[Registration centre](#)

[Reference & information](#)

[Data quality](#)

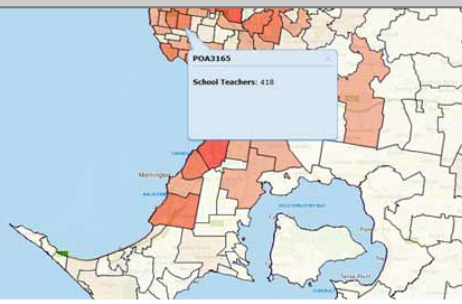
[Help & feedback](#)

[News & media](#)


Census home > Data & analysis

TableBuilder

TableBuilder is an online tool which enables users to create tables, graphs and maps of Census data



TableBuilder is designed for users who have a knowledge of Census concepts and some experience using Census data.



TableBuilder allows the freedom to construct basic to complex tables of data. You can build tables at any geographic area level, ranging from a single Statistical Area Level 1 (SA1) to the whole of Australia.

You can register now and subscribe to TableBuilder Basic or TableBuilder Pro, to gain access to shell databases for 2011. To register, go to the [Registration centre](#). To access the shell databases, log in to TableBuilder.

For the 2011 Census, there are two versions of TableBuilder:

- TableBuilder Basic** is a free product designed for clients who have some experience using Census data and who want to construct basic data tables. TableBuilder Basic provides access to most Census data in a range of topic-based data cubes that include classifications such as age, education, housing, income, transport, religion, ethnicity and occupation.
- TableBuilder Pro** is a charged product designed for advanced Census data users who want the freedom to create large and/or complex tables. TableBuilder Pro provides access to nearly all variables available in the Census data, supporting a large variety of cross-classified tables.

TableBuilder Basic & Pro

[Login](#)

[Register](#)

TableBuilder

[Details](#)

[Help & FAQs](#)

[User manual](#)

[Service level agreement](#)

[Release schedule](#)

TableBuilder Basic and TableBuilder Pro shell databases for 2011 available now

TableBuilder 2011: build a table

Please select a 'Saved Table', 'Pre-defined Topic' or a 'Database' and then select the 'Next' button

My Saved Tables

No Saved Tables found

Pre-Defined Topics

| My Tables | |
|--|--|
| Table Name ↕ | |
| 2011 Census Age by Sex | |
| 2011 Census Core Activity Need for Assistance by Sex | |
| 2011 Census Country of Birth of Person by Sex | |
| 2011 Census Dwelling Structure by Tenure Type | |
| 2011 Census Family Blending | |
| Table Name | |

Page 1 of 8

Available Databases

| Databases | |
|--|--|
| Database Name ↕ | |
| 2011 Census - Persons in Private Dwellings | |
| 2011 Census - Usual Address and Internal Migration | |
| 2006 Census - Ethnicity | |
| 2006 Census - Families | |
| 2006 Census - Dwellings | |
| Database Name | |

2 3 4 5 6

You currently have selected: Database: 2006 Census - Families

Next

There are ways to open a table:

- select a previously saved table
- select a pre-defined table (Basic users only)
- select an available database

Table View

Graph View

Map View

Customise Table | [My Custom Data](#) | [My Tables](#)

Download Table: [Excel 2007 \(.xlsx\)](#)

[Change Database...](#)

Close

Select items below, then build your table. [Help](#)

[Add to Row](#) [Add to Column](#) [Remove from Table](#)

[Collapse All](#) | [Un-tick All](#) | 0 items selected.



Retrieve Data

Auto

Percentage: [None](#)



SA3 by AGE10P - Age in Ten Year Groups

Counting: Persons, Place of Usual Residence

For further information see [Data Confidentiality](#).

Table cell count, including totals: 48 (12 columns x 4 rows).

| AGE10P - Age in Ten Year Groups | 0-9 years | 10-19 years | 20-29 years | 30-39 years | 40-49 years | 50-59 years | 60-69 years | 70-79 years | 80-89 years | 90-99 years | 100 years and over | Total |
|---------------------------------|-----------|-------------|-------------|-------------|-------------|-------------|-------------|-------------|-------------|-------------|--------------------|---------|
| SA3 | | | | | | | | | | | | |
| Wagga Wagga | 12,392 | 12,734 | 11,818 | 10,382 | 11,444 | 11,539 | 9,077 | 5,885 | 3,325 | 579 | 18 | 89,193 |
| Griffith - Murrumbidgee (West) | 6,812 | 7,078 | 5,280 | 5,505 | 6,304 | 6,075 | 4,420 | 3,145 | 1,717 | 252 | 8 | 46,596 |
| Tumut - Tumbarumba | 1,876 | 1,851 | 1,317 | 1,635 | 1,938 | 2,039 | 1,777 | 1,161 | 618 | 118 | 0 | 14,330 |
| Total | 21,080 | 21,663 | 18,415 | 17,522 | 19,686 | 19,653 | 15,274 | 10,191 | 5,660 | 949 | 26 | 150,119 |

Data Source: 2011 Census of Population and Housing

You can customise the table (SEIFA Deciles (Area-based), SEIFA Deciles (Population-based)) by selecting [Customise Table](#).

INFO: Cells in this table have been randomly adjusted to avoid the release of confidential data.

Annotation Descriptions

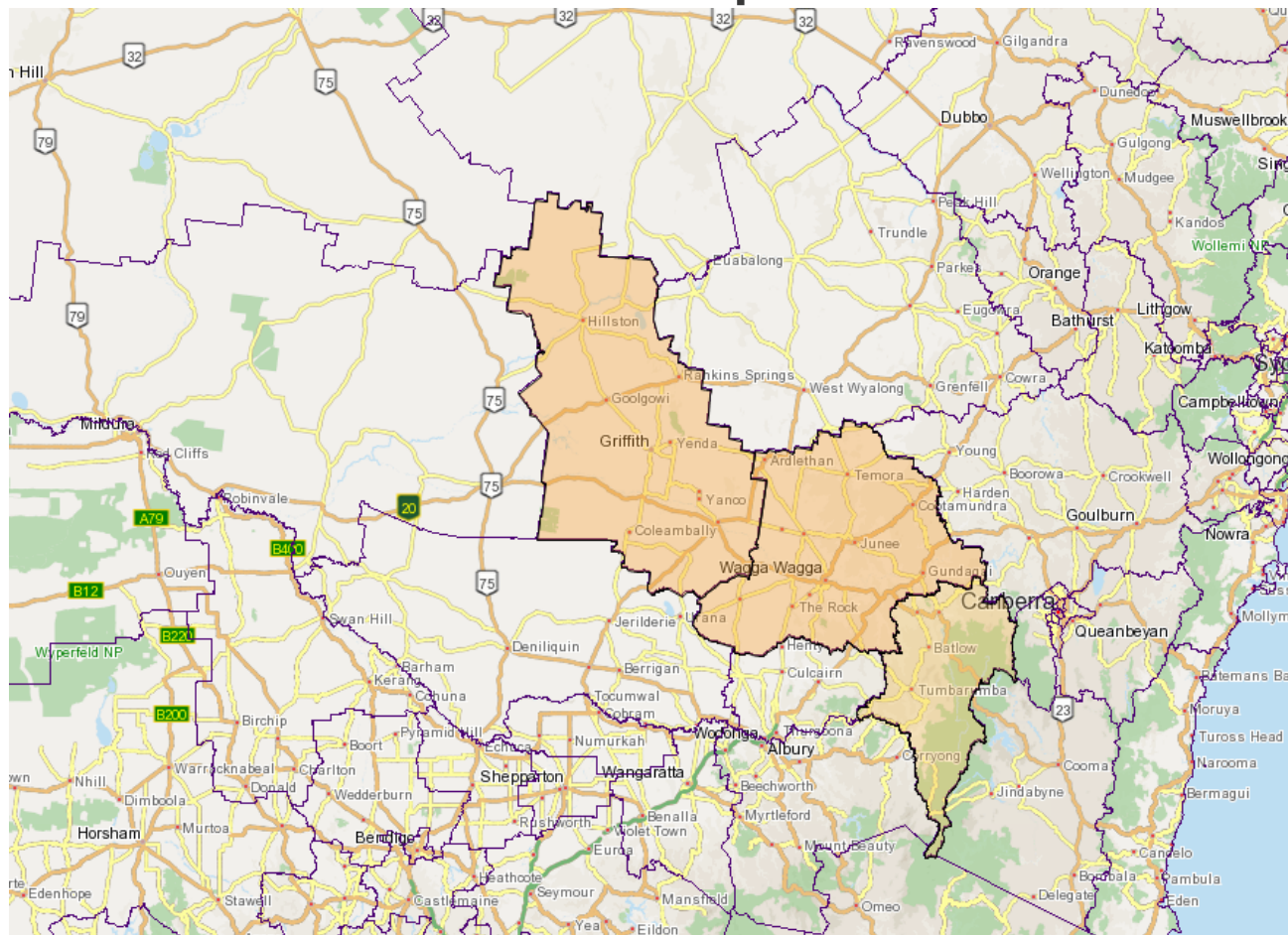
Description

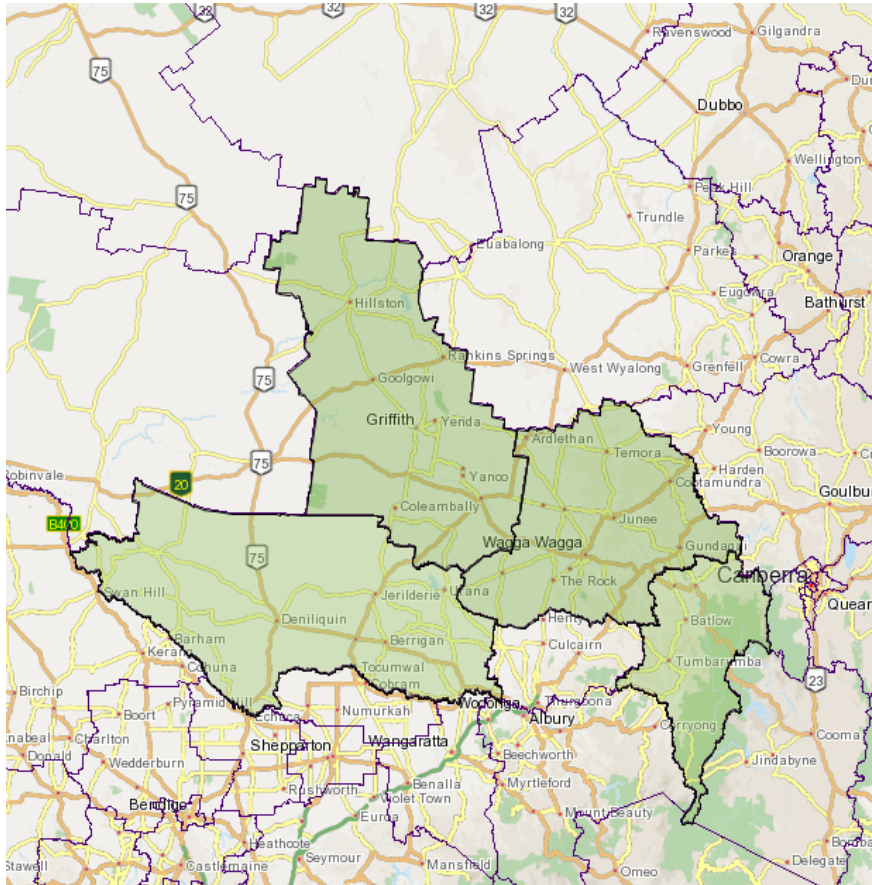
No reliance should be placed on small cells.

For details on a classification and associated data quality information click on the blue i-links in the table.

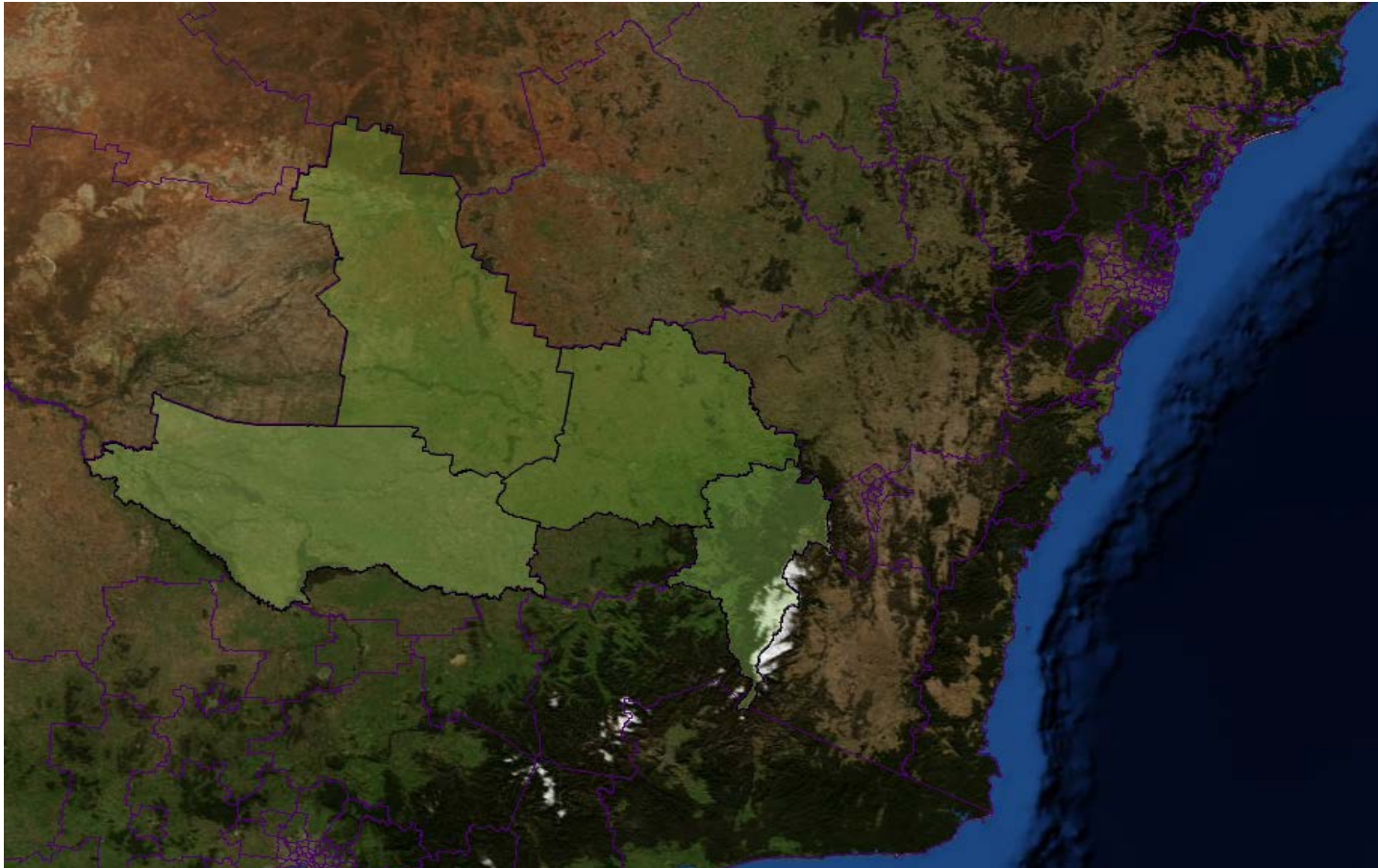
Cells in this table have been randomly adjusted to avoid the release of confidential data.

Data in map view





TableBuilder 2011: map functionality



Maps have both satellite and street map views

TableBuilder 2011: help available

Table View | Graph View | Map View

Customise Table | My Custom Data | My Tables

Download Table: Excel 2007 (.xlsx) (max 16,384 columns x 65,000 rows and < 100,000 cells) Go

Powered by SuperSTAR Space-Time Research

[TableBuilder Online Help](#)

Change Database... Close

Select items below, then build your table [Help](#)

Add to Row Add to Column Remove from Table

Collapse All Un-tick All 0 items selected.

- Geographical Areas
- Family Classifications
- Custom Geography

Retrieve Data Auto Percentage: None

Family Composition (FMCF) by Postal Area (POA)
Counting: Families, Place of Usual Residence

For further information see [Data Confidentiality](#).

Table cell count, including totals: 84 (14 columns x 6 rows).

| Postal Area (POA) | 2600 | 2603 | 2606 | 2605 | 2604 | 2607 | 2609 | 2900 | 2902 | 2903 | 2904 | 2905 | 2908 | Total |
|--------------------------------|-------|-------|-------|-------|-------|-------|------|------|-------|-------|-------|--------|-------|--------|
| Family Composition (FMCF) | ↑↓ | ↑↓ | ↑↓ | ↑↓ | ↑↓ | ↑↓ | ↑↓ | ↑↓ | ↑↓ | ↑↓ | ↑↓ | ↑↓ | ↑↓ | ↑↓ |
| Couple family with no children | 919 | 741 | 828 | 1,175 | 945 | 1,504 | 84 | 146 | 1,401 | 852 | 1,130 | 1,981 | 1,344 | 13,050 |
| Couple family with children | 745 | 899 | 652 | 1,361 | 573 | 1,638 | 33 | 80 | 2,105 | 1,318 | 2,085 | 4,298 | 2,692 | 18,479 |
| Other family | 14 | 30 | 55 | 45 | 41 | 47 | 0 | 7 | 51 | 37 | 43 | 104 | 48 | 522 |
| One parent family | 179 | 250 | 284 | 366 | 353 | 453 | 20 | 72 | 769 | 484 | 549 | 1,436 | 754 | 5,969 |
| Not applicable | 1,250 | 1,494 | 1,840 | 1,666 | 2,270 | 1,962 | 239 | 250 | 1,821 | 1,064 | 1,062 | 2,764 | 1,596 | 19,268 |
| Total | 3,107 | 3,414 | 3,659 | 4,613 | 4,182 | 5,604 | 376 | 555 | 6,147 | 3,755 | 4,869 | 10,583 | 6,424 | 57,288 |

Data Source: 2006 Census of Population and Housing
You can customise the table (Custom Geography) by selecting [Customise Table](#).

INFO: Cells in this table have been randomly adjusted to avoid the release of confidential data.

Annotation Descriptions

Description

No reliance should be placed on small cells.

For details on a classification and associated data quality information click on the blue i-links in the table

Help is also available within the product to assist you in understanding the tables and individual data items in TableBuilder. Look for the hyperlinks and information icons.